



PRINCESS<sup>®</sup>

2022

alaska

CRUISES & CRUISETOURS

#1 CRUISE LINE *in ALASKA*<sup>1</sup>





# great connections in the great land

Alaska's majesty inspires all who come to experience it. Having sailed to Alaska for more than 50 years, and as the 17-time winner of Travel Weekly's Best Cruise Line in Alaska, Princess® introduces you to Alaska like no other cruise line can. Your cruise reveals sweeping views of white-capped mountain peaks piercing bright blue skies and brings you up close to enormous tidewater glaciers. When you sail with Princess, you will create

enduring connections to Alaska that will remain with you for a lifetime: a conversation with local lumberjacks; the fresh flavors of Alaska seafood; and the sound of a calving glacier with your loved ones right by your side, sharing your sense of awe. Plus, our MedallionClass® cruises ensure you will enjoy an easy and personalized vacation. Discover why more guests choose Princess in Alaska every year than any other cruise line.



We are staying on top of health and safety protocols in our continuing effort to minimize the risk of exposure to COVID-19, which may impact our voyages and offerings, including amenities and itineraries. All U.S. voyages are subject to CDC Cruise Travel Advice, which is available at [princess.com/advisory](https://princess.com/advisory).

## SHARE YOUR STORY

Connect with Princess and fellow guests via Facebook, YouTube, Instagram, Twitter and Pinterest.

Share stories of your Princess adventures, watch videos and much more.



\*More guests chose Princess in Alaska than any other cruise line based on highest number of guests in 2019. \*Travel Weekly, Best Cruise Line in Alaska, 2003-2005; 2007-2020. The contents of this brochure are accurate as of the date of printing and are subject to change. Please refer to [princess.com](https://princess.com) for the most up-to-date information.



## what's inside

### DISCOVER ALASKA BY SEA

The Destination . . . . .	2
North to Alaska . . . . .	6
Cruising the Great Land . . . . .	8
Departure Ports . . . . .	10
Cities You'll Visit . . . . .	12
Glaciers . . . . .	14
Choose Your Cruise . . . . .	16
Voyage of the Glaciers Cruises . . . . .	18
Inside Passage Cruises . . . . .	20

### DISCOVER ALASKA WITH A CRUISETOUR

Cruisetours . . . . .	26
Explore Alaska with a Cruisetour . . . . .	28
Direct-to-the-Wilderness® . . . . .	29
Rail Service . . . . .	29
Princess® Wilderness Lodges . . . . .	30
Cruisetour Options . . . . .	36
Denali Explorer & On Your Own . . . . .	40
Off the Beaten Path . . . . .	54
Connoisseur . . . . .	60
Ultimate Cruisetour Experience . . . . .	66

### THE PRINCESS EXPERIENCE

MedallionClass® . . . . .	70
Dining . . . . .	74
Entertainment . . . . .	76
Relaxation . . . . .	78
Celebrations . . . . .	79
Family . . . . .	80
Staterooms . . . . .	82
Hotel Packages . . . . .	84
New to Cruising . . . . .	86
Princess Plus . . . . .	87
Plan Your Cruise . . . . .	88
The Alaska Fleet . . . . .	89



## PRINCESS PLUS

*with drinks + wi-fi + crew incentive included*

**with a value up to \$665 per guest included on a 7-day cruise!**

### Why is this our best value ever?

Because your cruise includes:

- + Premium Beverage Package with service charge
- + MedallionNet® Wi-Fi
- + Full Crew Incentive paid to our crew on your behalf

*See page 87 for more information.*





# the great land

There are a million and one reasons that Alaska has earned its “great” reputation. It’s home to Denali, North America’s tallest mountain that stands more than 20,000 feet above sea level. Tongass National Forest encompasses nearly 17 million acres of beautiful terrain. Within the 3.3 million acre expanse of Glacier Bay National Park, several tidewater glaciers tower hundreds of feet over the waterline, and the historic Harding Icefield boasts more than 30 dramatic glaciers. When you explore Alaska with Princess®, natural wonders are intertwined with meaningful moments of connecting with locals and listening to expert insight so that you’ll come away with a greater understanding of this truly unique destination.

## We are the Experts

Each year, more guests choose Princess in Alaska than any other cruise line. We have perfected this experience to show you this destination in its greatest and purest form.

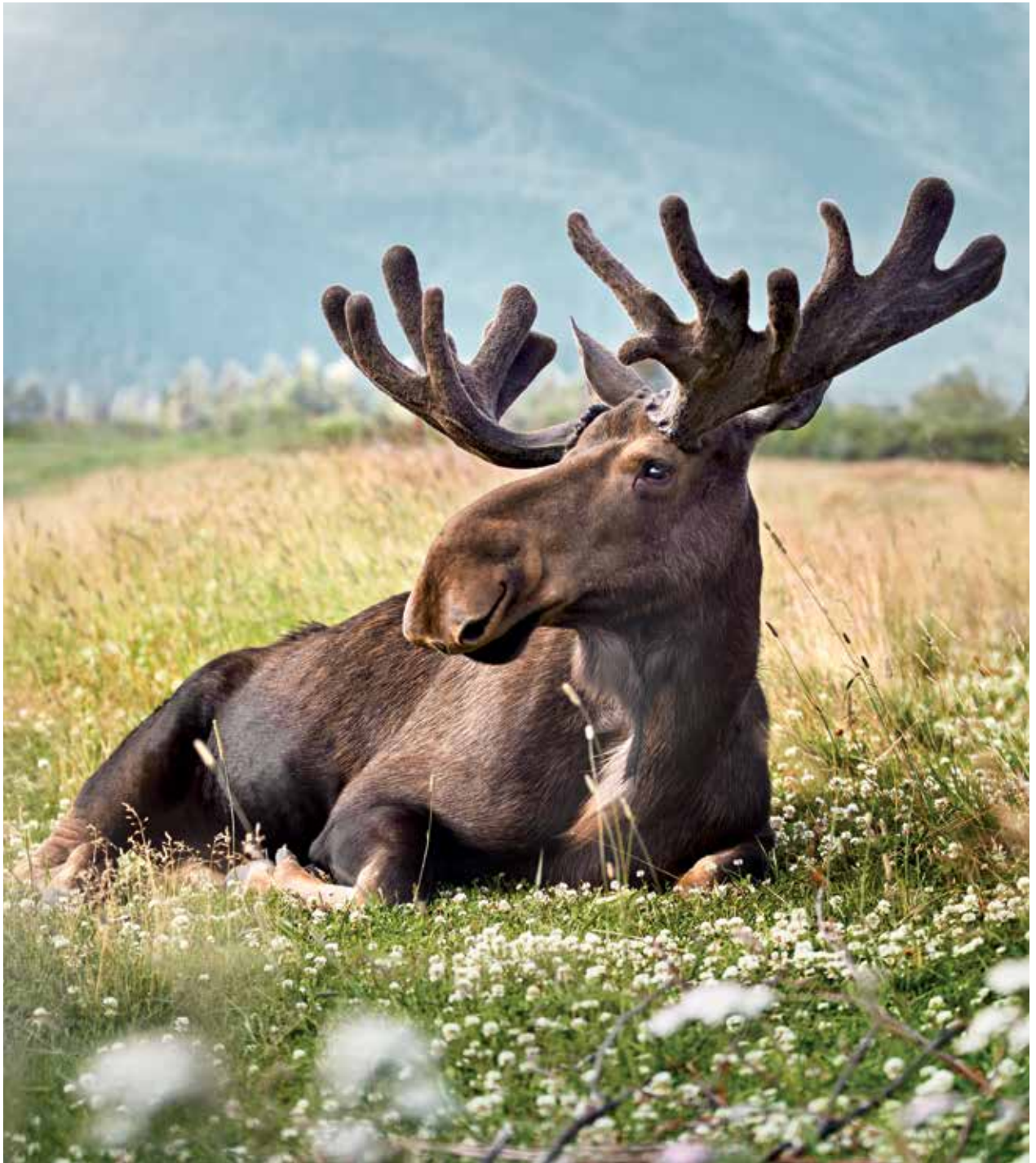




## glaciers

The native Tlingit call the sound “white thunder” when chunks of ice tear from a tidewater glacier and crash into the waters below. We call it spectacular — an experience of a lifetime that engages all of your senses. Every Princess® voyage offers at least one glacier viewing experience, and many offer two scenic days. On several voyages, you can spend a magical day gliding through Glacier Bay National Park. Why stop at that? Princess also invites you to hike across glaciers, race on a dogsled and soar above on a helicopter.





## wildlife

Alaska's pristine natural surroundings are teeming with wildlife — from densely forested lands to the deep blue waters around you. Enjoy the comfort of your balcony or join other curious guests on deck to watch a whale breaching in the seas. Spot bears feasting on salmon in fast-running waters, and look up to admire a bald eagle soaring overhead. Venture into Denali National Park to find the “big five” — bears, caribou, moose, wolves and Dall sheep — roaming about the landscape.





## mountains

Towering mountain ranges cross the expanse of Alaska, with Denali as its crown jewel. Marvel at the summits from every point of view — from flying over the peaks and glacial terrain by helicopter to rolling through the wilderness on a glass-domed train. Extend your stay on land to enjoy even more breathtaking perspectives, like listening to thrilling tales from mountain climbers and taking in views of Denali from the Great Room at Mt. McKinley Princess Wilderness Lodge.®



# go local with north to alaska

Why sail with Princess®? Our award-winning North to Alaska program enhances your connections with the destination through exclusive activities you won't find anywhere else. Taste fresh Alaska salmon and other regional cuisine prepared right on board. Fall in love with sled dog pups that gather in the Piazza for some cuddles. Watch lumberjacks in action and meet other storytellers and adventurers who understand the heart of Alaska.



Only Princess offers **North to Alaska**, our exclusive program that brings the best of the Great Land to you on board and on shore. So rich with authentic experiences, it has earned Travel Weekly's Gold Magellan Award.\*



\*Travel Weekly, Gold Magellan Award, Education Program, North to Alaska, 2016

"Cook My Catch is available on select Princess® shore excursions.

All North to Alaska offerings vary by ship and departure date. Charges apply for select dining experiences and are subject to change.



## Insights from *Alaskans*

Our long-standing connections to Alaska open up a world of opportunities. Get advice from **award-winning photographers** who know just how to frame Alaska's most iconic moments. Meet legendary **Libby Riddles**, the first woman to win the Iditarod Trail Sled Dog Race. Authors, artists, lumberjacks and experts will immerse you in Alaska's rich culture.



## Learning Together

There's always something fun to discover on an Alaska voyage. Join a gold rush-inspired party at the **Klondike Days** festival, listen to tales of native Tlingit tribes and learn how to create your own **gold nugget art**. Perhaps even consider a meet and greet with Puppies in the Piazza, junior sled dogs that will love some attention!

## Northern Lights experience

Unlock the secrets of the night sky inside an indoor planetarium on select ships. Learn more about the phenomenon known as the Northern Lights or aurora borealis, and maybe you'll even witness the remarkable colors as they ripple across the night sky.



## Culinary Immersions

The flavors of Alaska come to life on board and on shore. You can join Captain David Lethin, star of the Discovery™ Channel's *Deadliest Catch*, and learn the nuances of crab fishing in Alaska's waters. With our exclusive **Cook My Catch**<sup>10</sup> program, set out on a fishing excursion and bring your rewards back on board, where an expert chef can prepare it just to your liking. Shipboard cuisine celebrates the best of Alaska with fresh seafood and other local fare. You can even try local favorites from classic Alaska restaurants while on board, such as crab cakes from Tracy's King Crab Shack in Juneau, fish tacos from the Alaska Fish House in Ketchikan and seafood chowder from the Bonanza Bar and Grill in Skagway.



# cruising the great land



Cruises through Alaska reveal both sweeping landscapes of endless beauty and charming port towns where history comes to life. Sailing with Princess® brings you closer to all of the elements that make Alaska such a special place, allowing you to embrace the wonders of The Great Land with the people you love most. Discover the massive tidewater glaciers of Glacier Bay National Park, explore the wide expanse of Tongass National Forest, sail through the fjords of the Inside Passage and marvel at Ketchikan's hand-carved totem poles and other native works of art. All Alaska voyages are MedallionClass® enabled, ensuring that your vacation is simplified and personalized.

The newest ship to sail in this region, Discovery Princess,<sup>SM</sup> will take you past the scenic wonders of the Inside Passage roundtrip from Seattle.





## essentials for planning your cruise

Depart from These Ports . . . . .	10
Visit These Cities . . . . .	12
Glaciers on Your Cruise . . . . .	14
Choose Your Cruise . . . . .	16
Cruise Itineraries . . . . .	17



# depart from these ports



## seattle

Sail on these ships:  
Discovery Princess®  
Crown Princess®

You'll recognize Seattle's skyline instantly, and the city's whimsical personality shines wherever you go. See the world-famous fishmongers tossing the catch of the day at Pike Place Market and soar to the top of the iconic Space Needle.



### Seattle Excursion

#### BEST OF SEATTLE

Visit Seattle's most iconic attractions – Space Needle, Pike Place Market and Pioneer Square – then board a sightseeing vessel for a narrated waterside view of the city's spectacular skyline.



## san francisco

Sail on this ship:  
Ruby Princess®

California's City by the Bay seems to glow from within. The Golden Gate Bridge is an American treasure and the busy streets are brimming with many of the world's best restaurants, engaging museums and festivities throughout the day.



### San Francisco Excursion

**THE HEART OF SAN FRANCISCO: CABLE CARS, CAFE & CHARDONNAY**  
Explore picture-perfect views of San Francisco's most iconic landmark, the Golden Gate Bridge. Visit the charming bohemian enclave of Sausalito, and taste your way through the food stalls of the Ferry Building Marketplace.

## cruise plus® hotel packages

Relax before or after your cruise in these departure cities! Arrive early or stay later to take in the sights with peace of mind knowing you have time to see exactly what you want.  
[See page 86 for details.](#)



Princess Cruises® guarantees that you'll receive the best price on our extensive variety of shore excursions. For additional details, visit [princess.com/excursions](http://princess.com/excursions).



## vancouver, b.c.

Sail on these ships:  
Majestic Princess® Royal Princess®  
and Grand Princess®

Vancouver is more than your gateway to Alaska. It's a destination where natural beauty meets a hip city vibe. Visit the city's prime attractions from Stanley Park to Granville Island, where local food and crafts shine.



### Vancouver Excursion

STANLEY PARK VISIT & CITY  
HIGHLIGHTS DRIVE

Discover the natural beauty and signature sights such as North America's second largest Chinatown, historic Gastown and Stanley Park.



## anchorage (whittier)

Sail on these ships:  
Majestic Princess® Royal Princess®  
and Grand Princess®

Alaska's largest city is abundant with activities, and outdoor adventures are within easy reach. Experience the beauty of glaciers, fjords, wildlife and more scenic wonders with excursions that put you in close touch with untamed nature.



### Anchorage Excursion

PORTAGE GLACIER SCENIC  
CRUISE & DRIVE

Glide across Portage Lake to watch icy glaciers breaking off and crashing into the cold waters, and then visit the Alaska Wildlife Conservation Center.



# visit these ports of call



## juneau

Marvel at the soaring peaks that tower over Juneau, Alaska's capital city. Wander through fields of wildflowers that accent its hillsides during summer, and glide over mist-veiled mountains and massive glaciers via helicopter. Thrill-seekers will enjoy a ride on the Goldbelt Juneau Tram.



### Juneau Excursion

WHALE WATCHING & WILDLIFE QUEST

Experience Alaska's incredible scenery and amazing wildlife on this exceptional whale watching excursion.



## skagway

In Skagway, you'll get an authentic feel for life in the 19th century as you wander freely through this charismatic gold rush-era town. Peek into the colorful buildings that frame narrow streets and toast the day with a brew at a local bar.



### Skagway Excursion

WHITE PASS RAIL BENNETT LAKE  
All aboard the historic White Pass Railroad for a full-day wilderness adventure to beautiful Bennett Lake.



## sitka

Appreciate the natural beauty in Sitka as you explore the waterfront town. Sitka has a fascinating history with both Russian and Native Alaskan influences. Witness the Russian architecture of St. Michael's Cathedral, and marvel at the totem poles that are found throughout the city.



### Sitka Excursion

WILDERNESS SEA KAYAKING

Paddle along the rugged Alaska coastline, through mazes of reefs and kelp forest filled with colorful marine life.



## ketchikan

Get in on the action in Ketchikan by fishing like a real pioneer in the salmon capital of the world, or wander along quaint Creek Street. Whatever you do, you'll feel right at home here.



### Ketchikan Excursion

DEADLIEST CATCH CRAB  
FISHERMEN'S TOUR

See what life is like on an authentic Bering Sea fishing boat as your crew hauls up 700-pound crab pots, revealing massive king crabs and other marine life.



## icy strait point

In Icy Strait Point, treat yourself to freshly caught crab and halibut as you become acquainted with the northern way of life. Transfer up Hoonah Mountain and take the thrilling ZipRider experience back down over the forest. Out here, nature roams freely. You just might catch a brown bear trundling along in the Spasski River Valley.



### Icy Strait Point Excursion

REMOTE WILDLIFE &  
BROWN BEAR SEARCH

Venture through the temperate rainforest to viewing platforms in the Spasski River Valley, where you can view the brown bears that flock here all year long.



## victoria, b.c.

Get lost in the 55 acres of Butchart Gardens, featuring refined fountains and vibrant blooms. For history buffs, a tour through the chambers and corridors of Craigdarroch Castle is sure to fascinate. Or perhaps, high tea at the Pendray Mansion is more your style. One thing is for sure, Victoria's timeless British ambiance is guaranteed to impress.



### Victoria Excursion

BUTCHART & BUTTERFLY  
GARDENS

Pair the splendor of the Butchart Gardens with the Victoria Butterfly Gardens, a color-drenched habitat housing butterflies, tropical flowers, birds and fish.



# glaciers on your cruise



## glacier bay national park

Princess Cruises® is an authorized concessioner of Glacier Bay National Park.

The 3.3 million acre Glacier Bay National Park, a UNESCO-listed treasure, will both astound and intrigue. The magnificent Margerie Glacier is sure to impress with its dramatic blue spires. Beyond the ice, you'll see towering snow-capped mountains, deep fjords and freshwater streams. You may even catch a glimpse of humpback whales, sea otters and porpoises as they swim through the bay below, which you can learn about on board from knowledgeable Park Rangers.



## endicott arm & dawes glacier

As you sail through the narrow waterway of Endicott Arm, a sense of anticipation swells. Look up at the rising granite cliffs and keep your eyes peeled for clear views of wildlife traipsing through the landscape and tumbling waterfalls cascading down the cliffs. The grand finale is more rewarding than you can imagine. Dawes Glacier, standing more than 600 feet tall and a mile wide, is astonishing in its beauty.



## hubbard glacier

North America's largest tidewater glacier is a remarkable sight to behold. It measures an astonishing 76 miles long and 1,200 feet deep, and its rapid flow means that ice chunks frequently calve from the edge in a true spectacle. This region is teeming with wildlife, so keep your eyes open and your camera ready.



## college fjord

College Fjord offers the world's largest collection of tidewater glaciers, including the famed Harvard Glacier. Discovered in 1899 during the Harriman Expedition, professors on the excursion named glaciers after elite colleges, such as Harvard, Vassar and Yale. See for yourself why this is hailed as one of the world's most breathtaking destinations.



# CHOOSE YOUR cruise

With more than 50 years of experience and six ships sailing in Alaska, more guests choose Princess® to the Great Land than any other cruise line. Find the 7- to 12-day voyage that suits you, whether it's roundtrip or one-way, departing from any number of ports: Vancouver, B.C., Anchorage (Whittier), Seattle and San Francisco. Glacier viewings are an essential part of the experience while on board. Choose to extend your stay on land with a cruisetour, with five Princess-owned and operated wilderness lodges.



# two unique ITINERARIES:

## VOYAGE OF THE GLACIERS

### TOP-RATED ITINERARY

#### 7 days

This is the most popular option, with two days dedicated to scenic glacier viewing. Spend seven days cruising the Inside Passage and beyond, and get close to the awe-inspiring Margerie Glacier in Glacier Bay National Park — a UNESCO World Heritage Site. Hubbard Glacier or College Fjord is also part of your voyage, along with visits to historic Juneau, Ketchikan and Skagway.

#### INSIDE PASSAGE

#### 7, 10 or 12 days

Stretching all the way from Washington's Puget Sound and into Southeast Alaska, the Inside Passage has more than 1,000 islands, fjords and quiet bays. As you sail with Princess®, admire the scenery surrounding you, and stop in iconic ports such as Skagway, Ketchikan and Juneau.

	Voyage of the Glaciers	Inside Passage Roundtrip Seattle (Saturday departure <sup>16</sup> )	Inside Passage Roundtrip Seattle (Sunday departure)	Inside Passage Roundtrip Vancouver	Inside Passage Roundtrip San Francisco <sup>15</sup>
Days	7	7	7	7/10/12	10
Glacier Bay National Park	✓	✓		✓ <sup>12</sup>	✓ <sup>11</sup>
Endicott Arm (Dawes Glacier)			✓	✓ <sup>12</sup>	✓ <sup>11</sup>
Hubbard Glacier	✓ <sup>13</sup>			✓ <sup>11</sup>	
College Fjord	✓ <sup>14</sup>				
Ketchikan	✓	✓	✓	✓	✓
Sitka				✓ <sup>11</sup>	✓ <sup>11</sup>
Juneau	✓	✓	✓	✓	✓
Skagway	✓	✓	✓	✓	✓
Icy Strait Point				✓ <sup>11</sup>	✓ <sup>11</sup>
Victoria, B.C.	✓ <sup>11</sup>	✓	✓	✓ <sup>11</sup>	✓
Prince Rupert, B.C.				✓ <sup>11</sup>	
Inside Passage Scenic Cruising	✓	✓	✓	✓	✓
Gulf of Alaska Scenic Cruising	✓				
Vancouver, B.C.	✓			✓	
Anchorage (Whittier)	✓				
Seattle		✓	✓		
San Francisco					✓
Included in every Cruisetour	✓				

<sup>11</sup>On select itineraries.

<sup>12</sup>Endicott Arm replaces Glacier Bay on select itineraries.

<sup>13</sup>Hubbard Glacier is available on southbound itineraries only.

<sup>14</sup>College Fjord is available on northbound itineraries only.

<sup>15</sup>Port inclusions may vary.

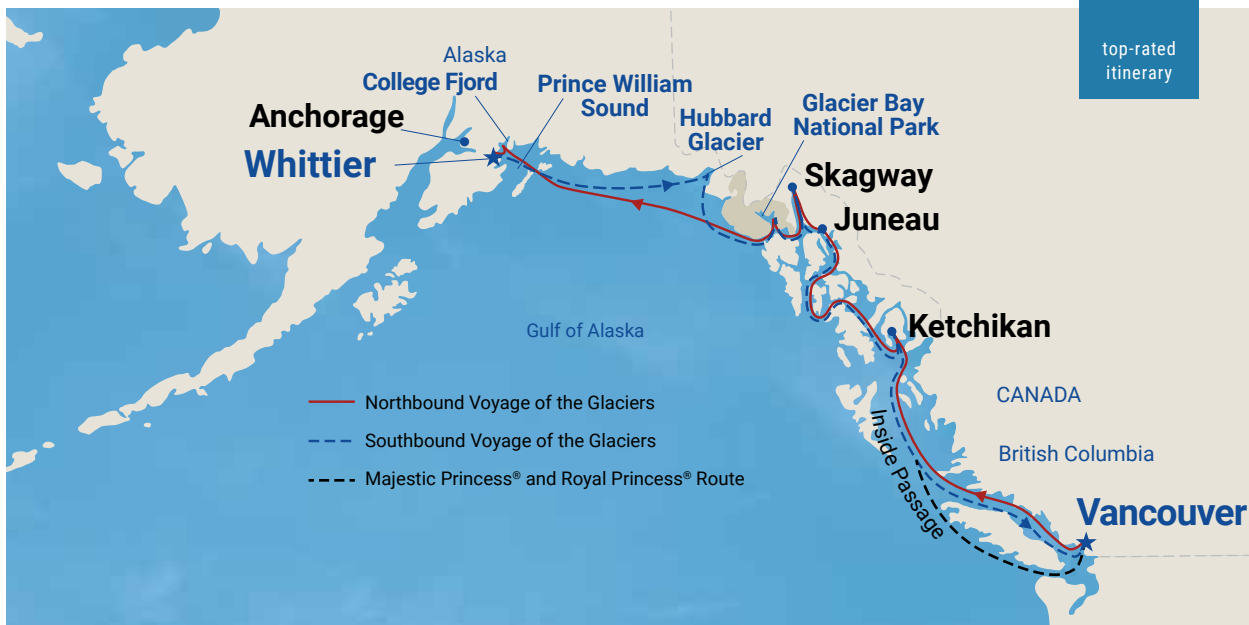
<sup>16</sup>Endicott Arm replaces Glacier Bay on select itineraries.

All ships sailing to Alaska are MedallionClass®-enabled to ensure your vacation is easy and personalized. See page 70 or visit [princess.com/medallionclass](http://princess.com/medallionclass) to learn more.

Turn the page to see our top-rated itinerary, Voyage of the Glaciers!







# CHOOSE YOUR CRUISE

# voyage of the glaciers









CHOOSE YOUR CRUISE

# inside passage

ROUNDTrip SEATTLE, VANCOUVER, B.C.  
AND SAN FRANCISCO



# roundtrip seattle

## highlights of inside passage

**NEW SHIP** Setting sail in 2022, Discovery Princess<sup>SM</sup> will be the newest ship sailing in Alaska of all cruise lines and will be our most innovative ship yet.

- Immerse yourself in the astonishing beauty of the Inside Passage. Make sure to keep an eye out for bald eagles and whales!

- Choose from convenient weekend departures.
- Catch your breath in awe as you spend a day exploring the scenic wonders of Glacier Bay National Park or Endicott Arm.
- Stop in top-rated port cities and enjoy late-night departures in Juneau and Victoria, British Columbia.



### Roundtrip Seattle

Glacier Bay National Park  
Saturday Departure

7 days 4 ports 1 glacier

DAY	PORT	more ashore	ARRIVE	DEPART
1	Seattle, Washington	Embark Afternoon		4 PM
2	Cruising the Inside Passage			
3	Juneau	LATE NIGHT	12 PM	10 PM
4	Skagway		7 AM	8:30 PM
5	Glacier Bay National Park Scenic Cruising		6 AM	4 PM
6	Ketchikan		7 AM	1 PM
7	Victoria, B.C., Canada	LATE NIGHT	7 PM	11:59 PM
8	Seattle, Washington	Disembark Morning		

**2022 SATURDAY DEPARTURES**

Crown Princess <sup>®</sup>	May 7	Jun 11	Jul 16	Aug 20
	May 14	Jun 18	Jul 23	Aug 27
	May 21	Jun 25	Jul 30	Sep 3
	May 28	Jul 2	Aug 6	Sep 10 <sup>20</sup>
	Jun 4	Jul 9	Aug 13	

**PRINCESS PLUS** INTERIOR fares from<sup>17</sup> **\$999**  
BALCONY fares from<sup>17</sup> **\$1,699**

Princess Plus fare includes<sup>18</sup> + drinks + wi-fi + crew incentive a value of **\$665**

<sup>17</sup>Fares based on 5/7/22 sailing. Fares for other dates may vary. Taxes, Fees and Port Expenses of up to \$275 are additional. See page 19 for details.  
<sup>18</sup>Certain restrictions apply, please refer to page 87 for complete terms, conditions and definitions that apply to all bookings.  
<sup>20</sup>Endicott Arm & Dawes Glacier replaces Glacier Bay National Park

### Roundtrip Seattle

Endicott Arm & Dawes Glacier  
Sunday Departure

7 days 4 ports 1 glacier

DAY	PORT	more ashore	ARRIVE	DEPART
1	Seattle, Washington	Embark Afternoon		4 PM
2	Cruising the Inside Passage			
3	Ketchikan		6:30 AM	3 PM
4	Endicott Arm & Dawes Glacier Scenic Cruising		5 AM	9 AM
4	Juneau	LATE NIGHT	12:30 PM	9 PM
5	Skagway		6 AM	5 PM
6	Cruising the Pacific Ocean			
7	Victoria, B.C., Canada	LATE NIGHT	7 PM	11:59 PM
8	Seattle, Washington	Disembark Morning		

**2022 SUNDAY DEPARTURES**

**NEW SHIP**

Discovery Princess <sup>SM</sup>	May 8	Jun 12	Jul 17	Aug 21
	May 15 <th>Jun 19</th> <td>Jul 24 <td>Aug 28</td> </td>	Jun 19	Jul 24 <td>Aug 28</td>	Aug 28
	May 22 <td>Jun 26 <td>Jul 31 <td>Sep 4</td> </td></td>	Jun 26 <td>Jul 31 <td>Sep 4</td> </td>	Jul 31 <td>Sep 4</td>	Sep 4
	May 29 <td>Jul 3 <td>Aug 7 <td>Sep 11</td> </td></td>	Jul 3 <td>Aug 7 <td>Sep 11</td> </td>	Aug 7 <td>Sep 11</td>	Sep 11
	Jun 5 <td>Jul 10 <td>Aug 14 <td></td> </td></td>	Jul 10 <td>Aug 14 <td></td> </td>	Aug 14 <td></td>	

**PRINCESS PLUS** INTERIOR fares from<sup>17</sup> **\$999**  
BALCONY fares from<sup>17</sup> **\$1,599**

Princess Plus fare includes<sup>18</sup> + drinks + wi-fi + crew incentive a value of **\$665**

<sup>17</sup>Fares based on 5/8/22 sailing. Fares for other dates may vary. Taxes, Fees and Port Expenses of up to \$265 are additional. See page 19 for details.  
<sup>18</sup>Certain restrictions apply, please refer to page 87 for complete terms, conditions and definitions that apply to all bookings.

#### more ashore

With a Late Night (9 p.m. or later) port call in Juneau and Victoria, B.C., on select sailings, you can extend your day with more time in port to explore.

All port times may vary.

OPPOSITE PAGE: Whale fluke in Glacier Bay National Park. THIS PAGE: A national park service ranger shares insight about Glacier Bay National Park.



Princess<sup>®</sup> MedallionClass<sup>®</sup> Experience. See Page 70 for more info.





# roundtrip vancouver, b.c.

## highlights of inside passage

- Spend 12 days with panoramic views as you admire the bright blue tint of Hubbard Glacier.
- Keep an eye out for humpback whales and orca whales frolicking in the sea and watch in awe as you see glacial ice shear off and tumble into the waters of Glacier Bay National Park.
- Sail to Ketchikan, Juneau and Skagway, as well as Icy Strait Point and Sitka.
- Glide through the mountain-lined Inside Passage, carved by glaciers millions of years ago.



### more ashore

With a Late Night (9 p.m. or later) port call in Juneau and Victoria, B.C., on select sailings, you can extend your day with more time in port to explore.



Princess® MedallionClass® Experience. See Page 70 for more info.

### Roundtrip Vancouver, B.C.

Glacier Bay  
National Park

12  
days

7  
ports

2  
glaciers

DAY	PORT	more ashore	ARRIVE	DEPART
1	Vancouver, B.C., Canada		Embark Afternoon	4PM
2	Cruising the Pacific Ocean			
3	Juneau	LATE NIGHT	1:30PM	10PM
4	Skagway		6AM	8:30PM
5	Icy Strait Point		7AM	6PM
6	Sitka		7AM	5PM
7	Hubbard Glacier Scenic Cruising		11AM	5PM
8	Glacier Bay National Park Scenic Cruising		6AM	3:30PM
9	Endicott Arm & Dawes Glacier Scenic Cruising		7AM	12PM
10	Ketchikan		7AM	6PM
11	Cruising the Inside Passage			
12	Victoria, B.C., Canada		7AM	5PM
13	Vancouver, B.C., Canada		Disembark Morning	



2022  
DEPARTURES

Royal Princess®  
May 2 MON

Grand Princess®  
Sep 14<sup>21</sup> WED



INTERIOR  
fares from<sup>17</sup> \$1,899  
BALCONY  
fares from<sup>17</sup> \$2,999

Princess Plus fare includes<sup>18</sup>  
+ drinks + wi-fi + crew incentive  
a value of **\$1,140**

<sup>17</sup>Fares based on 5/2/22 Royal Princess® sailing. Fares for other dates may vary. Taxes, Fees and Port Expenses of up to \$325 are additional. See page 19 for details.

<sup>18</sup>Certain restrictions apply, please refer to page 87 for complete terms, conditions and definitions that apply to all bookings.

<sup>21</sup>Endicott Arm & Dawes Glacier Scenic Cruising replaces Hubbard Glacier Scenic Cruising





## Roundtrip Vancouver, B.C.

📍 Glacier Bay National Park

10  
days

4  
ports

2  
glaciers

DAY	PORT	more ashore ▼	ARRIVE	DEPART
1	Vancouver, B.C., Canada	Embark Afternoon	4:30PM	
2	Cruising the Inside Passage			
3	Ketchikan		7AM	3PM
4	Juneau	LATE NIGHT	8AM	9PM
5	Skagway		6AM	8:30PM
6	Glacier Bay National Park Scenic Cruising		6AM	3:30PM
7	Icy Strait Point		7AM	6PM
8	Hubbard Glacier Scenic Cruising		7AM	1PM
9	Cruising the Pacific Ocean			
10	Cruising the Pacific Ocean			
11	Vancouver, B.C., Canada	Disembark Morning		



2022  
SATURDAY  
DEPARTURE

Majestic Princess®  
Sep 10



INTERIOR  
fares from<sup>17</sup> **\$1,599**

BALCONY  
fares from<sup>17</sup> **\$2,499**

Princess Plus fare includes<sup>18</sup>  
+ drinks + wi-fi + crew incentive  
a value of **\$950**

<sup>17</sup>Taxes, Fees and Port Expenses of up to \$250 are additional. See page 19 for details.

<sup>18</sup>Certain restrictions apply, please refer to page 87 for complete terms, conditions and definitions that apply to all bookings.

## Roundtrip Vancouver, B.C.

📍 Endicott Arm  
and Dawes Glacier

7  
days

4  
ports

1  
glacier

DAY	PORT	more ashore ▼	ARRIVE	DEPART
1	Vancouver, B.C., Canada	Embark Afternoon	4:30PM	
2	Cruising the Inside Passage			
3	Ketchikan		7AM	4PM
4	Endicott Arm & Dawes Glacier Scenic Cruising		7AM	11AM
4	Juneau	LATE NIGHT	2:30PM	10PM
5	Skagway		6AM	5PM
6	Cruising the Pacific Ocean			
7	Victoria, B.C., Canada	LATE NIGHT	7PM	11:59PM
8	Vancouver, B.C., Canada	Disembark Morning		



2022  
SATURDAY  
DEPARTURE

Royal Princess®  
Sep 17



INTERIOR  
fares from<sup>17</sup> **\$1,099**

BALCONY  
fares from<sup>17</sup> **\$1,849**

Princess Plus fare includes<sup>18</sup>  
+ drinks + wi-fi + crew incentive  
a value of **\$665**

<sup>17</sup>Taxes, Fees and Port Expenses of up to \$215 are additional. See page 19 for details.

<sup>18</sup>Certain restrictions apply, please refer to page 87 for complete terms, conditions and definitions that apply to all bookings.

**more ashore**

With a Late Night (9 p.m. or later) port call in Juneau on select sailings, you can extend your day with more time in port to explore.

All port times may vary.

OPPOSITE PAGE: Creek Street in Ketchikan; View of downtown Juneau. THIS PAGE, TOP TO BOTTOM: Glacier Bay National Park; Gold panning in Skagway.



Princess® MedallionClass® Experience. See Page 70 for more info.





# roundtrip san francisco

## highlights of inside passage

- Spend a day exploring the scenic wonders of Glacier Bay National Park or Endicott Arm & Dawes Glacier.
- Visits to Victoria, British Columbia, where the magical Butchart Gardens await.
- Stop in iconic ports such as Skagway, Ketchikan and Juneau.



### Roundtrip San Francisco

Endicott Arm and Dawes Glacier

10 days 4 ports 1 glacier

DAY	PORT	more ashore	ARRIVE	DEPART
1	San Francisco, California	Embark Afternoon	4PM	
2-3	Cruising the Pacific Ocean			
4	Icy Strait Point	LATE NIGHT	1:30PM	9PM
5	Haines	LATE NIGHT	7AM	9PM
6	Juneau	LATE NIGHT	7AM	9PM
7	Endicott Arm & Dawes Glacier Scenic Cruising		5AM	10AM
8	Cruising the Inside Passage			
9	Victoria, B.C., Canada		6AM	12PM
10	Cruising the Pacific Ocean			
11	San Francisco, California	Disembark Morning		



2022 DEPARTURES

Ruby Princess®

May 20 FRI

Jun 9 THU

Jun 19<sup>22</sup> SUN

Jul 9<sup>23</sup> SAT

Jul 29<sup>24</sup> FRI

Aug 18<sup>25</sup> THU



INTERIOR fares from<sup>17</sup> \$1,499

BALCONY fares from<sup>17</sup> \$2,249

Princess Plus fare includes<sup>18</sup>  
+ drinks + wi-fi + crew incentive  
a value of \$950

<sup>17</sup>Fares based on 5/20/22 sailing. Fares for other dates may vary. Taxes, Fees and Port Expenses of up to \$300 are additional. See page 19 for details.

<sup>18</sup>Certain restrictions apply, please refer to page 87 for complete terms, conditions and definitions that apply to all bookings.

<sup>22</sup>Ketchikan replaces Icy Strait Point, Skagway replaces Haines, port order varies.

<sup>23</sup>Ketchikan replaces Icy Strait Point and Tracy Arm Fjord replaces Endicott Arm & Dawes Glacier.

<sup>24</sup>Ketchikan replaces Icy Strait Point.

<sup>25</sup>Ketchikan replaces Icy Strait Point; Skagway replaces Haines; Tracy Arm Fjord replaces Endicott Arm & Dawes Glacier; port order varies.

### Roundtrip San Francisco

Glacier Bay National Park

10 days 4 ports 1 glacier

DAY	PORT	more ashore	ARRIVE	DEPART
1	San Francisco, California	Embark Afternoon	9PM	
2-3	Cruising the Pacific Ocean			
4	Juneau	LATE NIGHT	1:30PM	9PM
5	Skagway		6AM	8:30PM
6	Glacier Bay National Park Scenic Cruising		6AM	3PM
7	Ketchikan		8AM	6PM
8	Cruising the Inside Passage			
9	Victoria, B.C., Canada		6AM	12PM
10	Cruising the Pacific Ocean			
11	San Francisco, California	Disembark Morning		



2022 DEPARTURES

Ruby Princess®

April 30 SAT

May 10 TUE

May 30 MON

Jun 29<sup>26</sup> WED

Jul 19<sup>26</sup> TUE

Aug 8 MON

Aug 28<sup>27</sup> SUN

Sep 7<sup>26</sup> WED



INTERIOR fares from<sup>17</sup> \$1,499

BALCONY fares from<sup>17</sup> \$2,199

Princess Plus fare includes<sup>18</sup>  
+ drinks + wi-fi + crew incentive  
a value of \$950

<sup>17</sup>Fares based on 4/30/22 sailing. Fares for other dates may vary. Taxes, Fees and Port Expenses of up to \$325 are additional. See page 19 for details.

<sup>18</sup>Certain restrictions apply, please refer to page 87 for complete terms, conditions and definitions that apply to all bookings.

<sup>24</sup>Icy Strait Point replaces Skagway; port order varies.

<sup>27</sup>Sitka replaces Skagway; port order varies.

more ashore

With a Late Night (9 p.m. or later) port call in Juneau on select sailings, you can extend your day with more time in port to explore.



Princess® MedallionClass® Experience. See Page 70 for more info.



### Roundtrip Seattle

Glacier Bay National Park

8 days 5 ports 1 glacier

DAY	PORT	more ashore ▼	ARRIVE	DEPART
1	Seattle, Washington	Embark Afternoon		4PM
2	Cruising the Inside Passage			
3	Juneau	LATE NIGHT	1PM	10PM
4	Skagway		7AM	8:30PM
5	Glacier Bay National Park Scenic Cruising		6AM	3PM
6	Sitka		8AM	5PM
7	Ketchikan		7AM	1PM
8	Victoria, B.C., Canada	LATE NIGHT	7PM	11:59PM
9	Seattle, Washington	Disembark Morning		

**2022 FRIDAY DEPARTURE** Crown Princess® Apr 29

**PRINCESS PLUS**

**INTERIOR** fares from<sup>17</sup> **\$999**

**BALCONY** fares from<sup>17</sup> **\$1,699**

Princess Plus fare includes<sup>18</sup> + drinks + wi-fi + crew incentive a value of **\$760**

<sup>17</sup>Taxes, Fees and Port Expenses of up to \$215 are additional. See page 19 for details.

<sup>18</sup>Certain restrictions apply, please refer to page 87 for complete terms, conditions and definitions that apply to all bookings.

### Seattle to Vancouver, B.C.

Endicott Arm and Dawes Glacier

7 days 3 ports 1 glacier

DAY	PORT	more ashore ▼	ARRIVE	DEPART
1	Seattle, Washington	Embark Afternoon		4PM
2	Cruising the Inside Passage			
3	Ketchikan		7AM	1PM
4	Endicott Arm & Dawes Glacier Scenic Cruising		5AM	10AM
4	Juneau	LATE NIGHT	1:30PM	9PM
5	Skagway		6AM	8:30PM
6-7	Cruising the Pacific Ocean			
8	Vancouver, B.C., Canada	Disembark Morning		

**2022 SUNDAY DEPARTURE** Discovery Princess® Sep 18

**PRINCESS PLUS**

**INTERIOR** fares from<sup>17</sup> **\$1,049**

**BALCONY** fares from<sup>17</sup> **\$1,649**

Princess Plus fare includes<sup>18</sup> + drinks + wi-fi + crew incentive a value of **\$665**

<sup>17</sup>Taxes, Fees and Port Expenses of up to \$210 are additional. See page 19 for details.

<sup>18</sup>Certain restrictions apply, please refer to page 87 for complete terms, conditions and definitions that apply to all bookings.



Princess® MedallionClass® Experience. See Page 70 for more info.



# cruisetours

Visit Alaska's national parks, like Denali National Park, on an unforgettable cruisetour.

Picture yourself sailing past glaciers of all shapes and sizes on our top-rated Voyage of the Glaciers cruise, and then coming ashore to climb aboard our exclusive Direct-to-the-Wilderness® rail service, en route to the heart of Alaska. Once there, you'll spend multiple days exploring the treasures of legendary Denali National Park from Princess®-owned wilderness lodges. Let us show you all that The Great Land has to offer.

## essentials for planning your cruisetour

Travel by Rail.....	29
Stay Overnight at Princess Wilderness Lodges.....	30
Choose Your Itinerary .....	36
Cruisetour Itineraries.....	40



## northbound cruisetour

cruise

Start with glaciers and frontier towns on a 7-day Voyage of the Glaciers cruise

+

train

Enjoy scenic travel via exclusive Direct-to-the-Wilderness® rail service

+

lodge

Spend three or more nights on land at Princess wilderness lodges

## southbound cruisetour

lodge

Start with three or more nights on land at Princess wilderness lodges

+

train

Travel by exclusive Princess Direct-to-the-Wilderness® rail service

+

cruise

End with a 7-day Voyage of the Glaciers cruise to see glaciers and frontier towns



# explore alaska with a cruisetour



A cruisetour, which combines a 7-day Voyage of the Glaciers cruise, scenic rail and multiple days on land, invites you to explore more of the sights of Alaska, with our five Princess®-owned lodges as your home away from home. Explore Alaska's top two attractions, Glacier Bay National Park and Denali National Park, home to North America's tallest peak. After your adventures, sit back and relax at the lodge, where fresh Alaska seafood, comfortable decks and inspiring views await.

# travel by rail



cruisetours

direct-to-the-wilderness®

## DIRECT-TO-THE-WILDERNESS®



There is simply no better way to experience so much of Alaska's vast beauty than to see it by rail. Princess® offers exclusive Direct-to-the-Wilderness® rail service, whisking you straight from your cruise ship to Denali-area lodges on a legendary route. Glass-domed rail cars and our outdoor viewing platforms are designed to showcase every breathtaking mile of forested landscape, flowering meadows and glacial lakes. Expert rail guides deliver insightful narration about this historic route's long history and the natural wonders just outside your window. All cruisetours include rail travel and most include Direct-to-the-Wilderness® rail service.



**LOOK FOR**  
the Direct-to-the-Wilderness® rail service symbol for itineraries featuring this exclusive service between our ships and our Denali-area lodges.



**ALSO LOOK FOR**  
the Princess Rail symbol for itineraries including this service. It features beautiful Alaska scenery, plus our warm Princess service.



# princess wilderness lodges

Surround yourself with nature when you take a cruisetour. Our exclusive Princess® lodges are custom-built, complementing their surroundings deep in the wilderness overlooking a river. Warm and welcoming, these are the ideal places to explore Alaska's most magnificent attractions on your Princess cruisetour.

cruisetours

princess wilderness lodges



## denali

### Princess wilderness lodge®

Located on the edge of Denali National Park, this campus-style lodge offers incredible views along with its easy access to the park. [page 31](#)

## mt. mckinley

### Princess wilderness lodge®

A glass of wine and a comfortable seat in the Great Room is the perfect setting to capture views of Denali in this remote lodge, located in Denali State Park. [page 32](#)

## kenai

### Princess wilderness lodge®

Bungalow-style rooms with wood-burning fireplaces are a place to relax after rafting in the Kenai River and kayaking through Kenai Fjords National Park. [page 33](#)

## copper river

### Princess wilderness lodge®

Sitting on a bluff overlooking the beautiful expanse of Wrangell-St. Elias National Park, this lodge offers access to a world of adventures at the confluence of two rivers. [page 34](#)

## fairbanks

### Princess riverside lodge®

Once a lively gold mining town, Fairbanks sits at the edge of the wild frontier — and Fairbanks Princess Riverside Lodge® is a relaxing space that welcomes you to unwind and enjoy the views. [page 35](#)



# denali princess wilderness lodge®

gateway to Denali National Park

Just one mile from the entrance to Denali National Park, the Denali Princess Wilderness Lodge® is your gateway to a world like no other. Within the 6 million acre expanse, Denali is teeming with wildlife. Grizzly bears, moose, caribou, Dall sheep and wolves are visible as you embark on a guided tour in the park. Relax by the fireplace or look out over the Nenana River from the expansive deck, and gather with your loved ones at Fannie Q's saloon — a lively spot named for Fannie Quigley, a colorful homesteader whose hunting skills were as legendary as her wilderness cooking.



## VISIT DENALI NATIONAL PARK

Guided park tours showcase the best of Denali, with choices tailored to your personal interests. Learn about the park's rich history on a Natural History tour, or travel 63 miles deep into the breathtaking landscape on a Tundra Wilderness Tour.

## CONNECT WITH LOVED ONES

Take time to enjoy down time over a hearty meal at Fannie Q's Saloon and on the fireside patio. The Princess Village creates fun memories for everyone with a cheery Christmas Cottage and Sugar Shack.

## AN ALASKA FEAST

Enjoy a true taste of Alaska with local seafood like king crab and wild salmon at King Salmon Restaurant, order a slice at Lynx Creek Pizza, and enjoy a popular Princess® specialty at Grizzly Burger: a juicy ribeye "Ernesto" burger.

## SURROUNDED BY NATURE

Your lodge's intimate surroundings are naturally connected to the environment. Forty-foot-tall windows and an expansive outdoor deck reveal beautiful views of the Nenana River.

OPPOSITE PAGE, TOP TO BOTTOM, LEFT TO RIGHT: Denali Princess Wilderness Lodge®; Fairbanks Princess Riverside Lodge®; Mt. McKinley Princess Wilderness Lodge®; Kenai Princess Wilderness Lodge®; Copper River Princess Wilderness Lodge®. THIS PAGE, CLOCKWISE FROM TOP right: Young grizzly bear, Denali National Park; Walking in front of the Denali Princess Wilderness Lodge®; Deck overlooking the Nenana River; Fannie Q's Saloon.



# mt. mckinley princess wilderness lodge®

Denali vistas from your doorstep



With views of Denali and the wilds of Alaska in your own backyard, this true wilderness retreat is an extraordinary getaway. Located inside the state park and 40 miles from Denali, the mountain's presence is always near — its dramatic peaks on display from the Great Room as you sip on a locally brewed beer or make s'mores over fire pits on the patio. Outdoor adventures are at your fingertips, from river rafting to flightseeing over Denali and the Alaska Range.



## FROM THE TREETOPS

A unique sight in the Alaska wilderness is a treehouse, as seen and built on Animal Planet's™ Treehouse Masters. Join in for a Sappy Hour tasting of syrups and other products made from birch sap.

## STORIES OF DENALI

Inspiration is everywhere as you learn about the power and might of Denali. Hear captivating stories from climbers in the Hudson Theater, and view the restored aircraft of legendary bush pilot Cliff Hudson.

## A TASTE OF ALASKA

Crab-stuffed halibut and king salmon are just two of the highlights on the menu at North Fork, while 20,320 Alaskan Grill — named after Denali's height — serves local cuisine and is decorated with artifacts from Denali ascents.

## OUTDOOR ADVENTURES

The historic town of Talkeetna, "the meeting of three rivers," is your gateway to a bounty of outdoor recreation. River rafting, horseback riding and flightseeing over the mountains are just the beginning of your adventures.

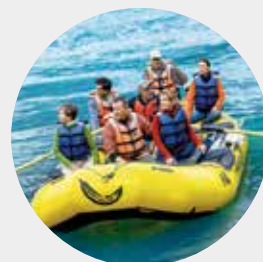
\*Condé Nast Traveler, Readers' Choice Awards, Top Resorts in Alaska and The Pacific Northwest, Mt. McKinley Princess Wilderness Lodge; 2017

# kenai princess wilderness lodge®

Alaska's playground



The Kenai Peninsula is known as "Alaska's Playground," which is quite an honor in a state filled with such abundant outdoor treasures. Enjoy up-close access to this 690,000-acre wonderland, with nature hikes, river rafting and day cruises to Kenai Fjords National Park. In between adventures, return to your tranquil wilderness retreat with cozy nooks and an expansive deck that overlooks the astonishingly blue Kenai River.



## COZY RETREATS

Bungalow-style rooms and wood-burning stoves set the tone for a warm, inviting stay in this relaxing wilderness retreat high above the Kenai River.

## MOUTHWATERING FLAVORS

Sit down for an elegant meal at Rod & Reel Restaurant, serving locally inspired dishes with wines from a robust cellar. Rafter's Lounge is a perfect place for a casual meal paired with an Alaska brew.

## ADVENTUROUS EXCURSIONS

Set out on a scenic drive to Seward, the gateway to Kenai Fjords National Park. Here, remnants of the Ice Age still exist, with 40 glaciers flowing from the Harding Icefield.

## HISTORY COMES ALIVE

Travel back to the gold rush days with a gold-panning excursion or explore the historic settlement of Cooper Landing, the site of Alaska's very first gold discovery.

\*Condé Nast Traveler, Readers' Choice Awards, Top Resorts in Alaska and The Pacific Northwest, Kenai Princess Wilderness Lodge, 2015

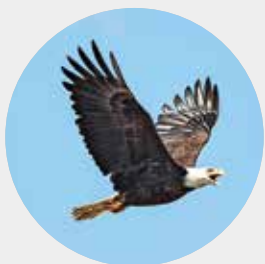
OPPOSITE PAGE, CLOCKWISE FROM TOP LEFT: Denali; Restored bush plane outside the Hudson Theater; North Fork restaurant; Treehouse. THIS PAGE, CLOCKWISE FROM TOP RIGHT: Rafting on the Kenai River; Viewing the Kenai river from deck of the Kenai Princess Wilderness Lodge; The main lodge; Touring the Kenai Fjords National Park.





# copper river princess wilderness lodge®

spectacular wilderness retreat



Built on a bluff overlooking two rivers, this retreat stands at the edge of America's largest national park. Amazingly, Wrangell-St. Elias National Park encompasses 13.2 million breathtaking acres of land rippling across south central Alaska — including nine of the 16 highest peaks in the United States. Capture unbelievable views, including the peaks of Mt. Drum, Mt. Wrangell and Mt. Blackburn, through the two-story windows of the Wrangell Room.



## STEP INTO HISTORY

Just outside of the lodge, Klutina Lake Trail is a historic mining route from the gold rush era. You can also join an excursion to the abandoned Kennecott Copper Mine, a National Historic Landmark.

## RELAX AND UNWIND

The Wrangell Room is the highlight of this wilderness lodge, where you can sit back and take in majestic mountain views through a two-story wall of windows. Take time to relax with a book in the cozy lobby in front of a crackling fireplace.

## DINING WITH A VIEW

Elegant cuisine at Two Rivers restaurant is accompanied by lovely views of the mountains and valleys. Savor the fresh flavors of locally caught Alaska seafood, including wild crab straight from the Bering Sea.

## ON THE WATER

There are ample ways to get out onto the water however you choose to explore. Jet boat along the river or journey to a glacier in Prince William Sound via catamaran. Fishing excursions guide you to world-class waters to catch your own salmon.

# fairbanks princess riverside lodge®

in the heart of alaska

Welcome to your retreat standing at the edge of the rugged interior. Tranquil views of the Chena River and comfortable accommodations set the tone for a relaxed stay, while you can also enjoy easy access to downtown Fairbanks, Alaska's Golden Heart City. This is truly the heart of the Great Land and an ideal place to begin or end your adventure.



## SIGNATURE CUISINE

Feel the crisp air as you sip cocktails and dine on authentic Alaska cuisine on the expansive deck with the river flowing before you, or find more casual fare at Trackers Bar & Grill.

## SEE THE SIGHTS

Fairbanks is the gateway to new adventures — like embarking on a Sternwheeler Riverboat Cruise, panning for gold at Gold Dredge 8 or visiting the nearby University of Alaska Fairbanks Museum of the North.

## THE HEART OF ALASKA

A gold mining town at the turn of the century, Fairbanks is also the gateway to Alaska's interior, the land of the midnight sun and just a short flight from the Arctic Circle and the Yukon River.

## COZY COMFORTS

Feel right at home within the lodge's rustic interior, with comfortable seating in front of a crackling fireplace. Take some time to view the local artwork on display in the on-site gallery.

OPPOSITE PAGE, CLOCKWISE FROM TOP LEFT: Bald eagle; Shuffleboard at Copper River Princess Wilderness Lodge®; viewing a glacier, Copper River Princess Wilderness Lodge.® THIS PAGE, CLOCKWISE FROM TOP RIGHT: Fairbanks Princess Riverside Lodge;® A local with sled dog puppies in front of a Sternwheeler Riverboat; Fairbanks Princess Riverside Lodge,® panning for gold.



# cruisetours

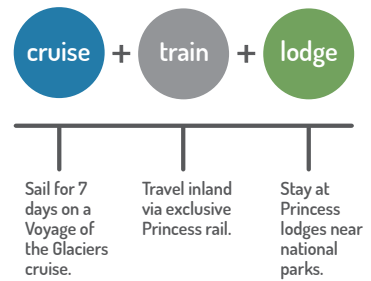
Immerse yourself in the majesty of Alaska — your way. With four types of cruisetour categories to choose from, you can stay true to your style of travel and have the experience of a lifetime.

## DENALI EXPLORER cruisetours pages 40-53

Delve into Denali National Park from different points of view on our most popular cruisetour type. Pair a seven-day Voyage of the Glaciers cruise with three to six nights on land, connected by our exclusive Direct-to-the-Wilderness® rail service on most itineraries.



Flip open this page for a quick overview of all tours, with more details on the following pages.



## ON YOUR OWN cruisetours pages 41-45

Independent travelers can go on their own and create an itinerary that matches their style. Includes three or four nights on land and a design-your-own schedule.

## OFF THE BEATEN PATH cruisetours pages 54-59

Enjoy all of the highlights of a Denali Explorer cruisetour and enhance the experience with time exploring remote lands: Kenai Fjords National Park or Copper River just outside Wrangell-St. Elias National Park.



## CONNOISSEUR cruisetours pages 60-67

Spend five to 10 nights on land to get the most out of your personalized adventure. Guided tour directors will lead you to essential sights, while you'll also have opportunities to visit places such as Denali, Copper River or even the stunning Kenai Peninsula. These tours include most meals on land.

CLOCKWISE FROM TOP LEFT: Direct-to-the-Wilderness® rail service; Kayaking excursion; Dining at Fannie O's Saloon at the Denali Princess Wilderness Lodge®; Exploring the trail from the Copper River Princess Wilderness Lodge®.

# denali explorer & on your own cruisetours

**A** 10 nights

Nights — 1-7 ————— 8 ————— 9 ————— 10 —————

Voyage of the Glaciers cruise

1 night Denali Princess Wilderness Lodge\*  
Natural History Tour

1 night Mt. McKinley Princess Wilderness Lodge\*

1 night Anchorage

Interior fares from\* **\$1,829**  
Balcony fares from\* **\$2,629**

ON YOUR OWN ALSO AVAILABLE\*  
FARES FROM \$1,449\*  
TOUR AAX & ABX

\*AA3 fares based on 5/14/22 on Royal Princess.\* Taxes, Fees and Port Expenses of up to \$285 are additional and subject to change.  
See page 41 for full itinerary details.

**B** 10 nights

Nights — 1-7 ————— 8 ————— 9 ————— 10 —————

Voyage of the Glaciers cruise

1 night Mt. McKinley Princess Wilderness Lodge\*

1 night Denali Princess Wilderness Lodge\*  
Natural History Tour

1 night Fairbanks  
Sternwheeler Riverboat Cruise

Interior fares from\* **\$1,909**  
Balcony fares from\* **\$2,709**

ON YOUR OWN ALSO AVAILABLE\*  
FARES FROM \$1,499\*  
TOUR BAX & BBX

\*BA3 fares based on 5/11/22 departure on Grand Princess.\* Taxes, Fees and Port Expenses of up to \$275 are additional and subject to change.  
See page 42 for full itinerary details.

**C** 10 nights

Nights — 1-7 ————— 8 + 9 ————— 10 —————

Voyage of the Glaciers cruise

2 nights Denali Princess Wilderness Lodge\*  
Natural History Tour

1 night Fairbanks  
Sternwheeler Riverboat Cruise

Interior fares from\* **\$1,849**  
Balcony fares from\* **\$2,649**

\*CA3 fares based on 5/14/22 departure on Royal Princess.\* Taxes, Fees and Port Expenses of up to \$280 are additional and subject to change.  
See page 43 for full itinerary details.

**D** 11 nights

Nights — 1-7 ————— 8 + 9 + 10 ————— 11 —————

Voyage of the Glaciers cruise

3 nights Denali Princess Wilderness Lodge\*  
Tundra Wilderness Tour

1 night Anchorage

Interior fares from\* **\$1,829**  
Balcony fares from\* **\$2,629**

\*DA4 fares based on 5/11/22 on Grand Princess.\* Taxes, Fees and Port Expenses of up to \$295 are additional and subject to change.  
See page 44 for full itinerary details.

**E** 11 nights

Nights — 1-7 ————— 8 + 9 ————— 10 ————— 11 —————

Voyage of the Glaciers cruise

2 nights Denali Princess Wilderness Lodge\*  
Natural History Tour

1 night Mt. McKinley Princess Wilderness Lodge\*

1 night Anchorage

Interior fares from\* **\$1,879**  
Balcony fares from\* **\$2,679**

ON YOUR OWN ALSO AVAILABLE\*  
FARES FROM \$1,599\*  
TOUR EAX & EBX

\*EA4 fares based on 5/11/22 departure on Grand Princess.\* Taxes, Fees and Port Expenses of up to \$290 are additional and subject to change.  
See page 45 for full itinerary details.

**F** 11 nights

Nights — 1-7 ————— 8 ————— 9 + 10 ————— 11 —————

Voyage of the Glaciers cruise

1 night Mt. McKinley Princess Wilderness Lodge\*

2 nights Denali Princess Wilderness Lodge\*  
Natural History Tour

1 night Fairbanks  
Sternwheeler Riverboat Cruise

Interior fares from\* **\$1,899**  
Balcony fares from\* **\$2,699**

ON YOUR OWN ALSO AVAILABLE\*  
FARES FROM \$1,649\*  
TOUR FAX & FBX

\*FA4 fares based on 5/11/22 departure on Grand Princess.\* Taxes, Fees and Port Expenses of up to \$285 are additional and subject to change.  
See page 47 for full itinerary details.

**G** 11 nights

Nights — 1-7 ————— 8 + 9 ————— 10 + 11 —————

Voyage of the Glaciers cruise

2 nights Denali Princess Wilderness Lodge\*  
Natural History Tour

2 nights Fairbanks  
Sternwheeler Riverboat Cruise & Gold Dredge 8 Tour

Interior fares from\* **\$1,859**  
Balcony fares from\* **\$2,659**

\*GA4 fares based on 5/14/22 departure on Royal Princess.\* Taxes, Fees and Port Expenses of up to \$285 are additional and subject to change.  
See page 48 for full itinerary details.

**H** 12 nights

Nights — 1-7 ————— 8 + 9 ————— 10 + 11 ————— 12 —————

Voyage of the Glaciers cruise

2 nights Denali Princess Wilderness Lodge\*  
Natural History Tour

2 nights Mt. McKinley Princess Wilderness Lodge\*

1 night Anchorage

Interior fares from\* **\$1,949**  
Balcony fares from\* **\$2,749**

\*HA5 fares based on 5/11/22 departure on Grand Princess.\* Taxes, Fees and Port Expenses of up to \$290 are additional and subject to change.  
See page 49 for full itinerary details.



**I** 12 nights

Nights —1-7— —8+9— —10+11— —12—

Voyage of the Glaciers cruise

2 nights Mt. McKinley Princess Wilderness Lodge\*

2 nights Denali Princess Wilderness Lodge\*  
Natural History Tour

1 night Fairbanks  
Sternwheeler Riverboat Cruise

Interior fares from\* \$2,079  
Balcony fares from\* \$2,879

\*IA5 fares based on 5/11/22 departure on Grand Princess\* Taxes, Fees and Port Expenses of up to \$285 are additional and subject to change. See page 50 for full itinerary details.

**J** 12 nights

Nights —1-7— —8— —9— —10+11— —12—

Voyage of the Glaciers cruise

1 night Anchorage

1 night Mt. McKinley Princess Wilderness Lodge\*

2 nights Denali Princess Wilderness Lodge\*  
Natural History Tour

1 night Fairbanks  
Sternwheeler Riverboat Cruise

Interior fares from\* \$1,829  
Balcony fares from\* \$2,629

\*JA5 fares based on 5/14/22 departure on Royal Princess\* Taxes, Fees and Port Expenses of up to \$300 are additional and subject to change. See page 51 for full itinerary details.

**K** 13 nights

Nights —1-7— —8+9— —10+11— —12+13—

Voyage of the Glaciers cruise

2 nights Mt. McKinley Princess Wilderness Lodge\*

2 nights Denali Princess Wilderness Lodge\*  
Natural History Tour

2 nights Fairbanks  
Sternwheeler Riverboat Cruise & Gold Dredge 8 Tour

Interior fares from\* \$2,439  
Balcony fares from\* \$3,239

\*KA6 fares based on 5/11/22 departure on Grand Princess\* Taxes, Fees and Port Expenses of up to \$295 are additional and subject to change. See page 53 for full itinerary details.

## off the beaten path cruisetours

**L** 12 nights

Nights —1-7— —8— —9— —10+11— —12—

Voyage of the Glaciers cruise

1 night Kenai Princess Wilderness Lodge\*

1 night Mt. McKinley Princess Wilderness Lodge\*

2 nights Denali Princess Wilderness Lodge\*  
Natural History Tour

1 night Fairbanks  
Sternwheeler Riverboat Cruise

Interior fares from\* \$2,029  
Balcony fares from\* \$2,829

\*LA5 fares based on 5/11/22 departure on Grand Princess\* Taxes, Fees and Port Expenses of up to \$285 are additional and subject to change. See page 55 for full itinerary details.

**M** 13 nights

Nights —1-7— —8+9— —10+11— —12— —13—

Voyage of the Glaciers cruise

2 nights Copper River Princess Wilderness Lodge\*

2 nights Denali Princess Wilderness Lodge\*  
Natural History Tour

1 night Mt. McKinley Princess Wilderness Lodge\*

1 night Anchorage

Interior fares from\* \$2,639  
Balcony fares from\* \$3,439

\*MA6 fares based on 5/14/22 departure on Royal Princess\* Taxes, Fees and Port Expenses of up to \$295 are additional and subject to change. See page 56 for full itinerary details.

**N** 14 nights

Nights —1-7— —8— —9— —10+11— —12+13— —14—

Voyage of the Glaciers cruise

1 night Mt. McKinley Princess Wilderness Lodge\*

1 night Denali Princess Wilderness Lodge\*  
Natural History Tour

2 nights Fairbanks  
Sternwheeler Riverboat Cruise & Gold Dredge 8 Tour

2 nights Copper River Princess Wilderness Lodge\*

1 night Anchorage

Interior fares from\* \$2,629  
Balcony fares from\* \$3,459

\*NA7 fares based on 5/11/22 departure on Grand Princess\* Taxes, Fees and Port Expenses of up to \$295 are additional and subject to change. See page 57 for full itinerary details.

**O** 14 nights

Nights —1-7— —8+9— —10— —11+12— —13+14—

Voyage of the Glaciers cruise

2 nights Kenai Princess Wilderness Lodge\*

1 night Mt. McKinley Princess Wilderness Lodge\*

2 nights Denali Princess Wilderness Lodge\*  
Natural History Tour

2 nights Fairbanks  
Sternwheeler Riverboat Cruise & Gold Dredge 8 Tour

Interior fares from\* \$2,499  
Balcony fares from\* \$3,299

\*OA7 fares based on 5/11/22 departure on Grand Princess\* Taxes, Fees and Port Expenses of up to \$295 are additional and subject to change. See page 56 for full itinerary details.

**P** 15 nights

Nights —1-7— —8+9— —10+11— —12+13— —14+15—

Voyage of the Glaciers cruise

2 nights Kenai Princess Wilderness Lodge\*

2 nights Copper River Princess Wilderness Lodge\*

2 nights Denali Princess Wilderness Lodge\*  
Natural History Tour

2 nights Fairbanks  
Sternwheeler Riverboat Cruise & Gold Dredge 8 Tour

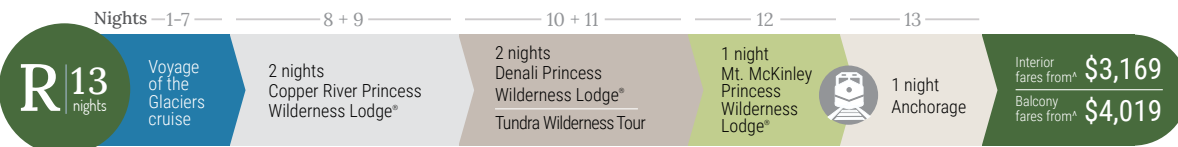
Interior fares from\* sold out  
Balcony fares from\* sold out

Taxes, Fees and Port Expenses of up to \$290 are additional and subject to change. See page 59 for full itinerary details.

# connoisseur cruisetours



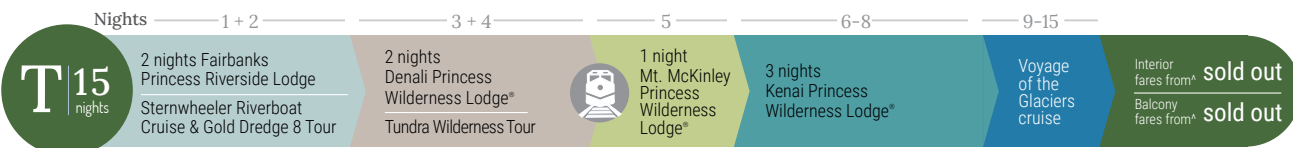
\*QA5 fares based on 5/11/22 departure on Grand Princess® Taxes, Fees and Port Expenses of up to \$295 are additional and subject to change. See page 61 for full itinerary details.



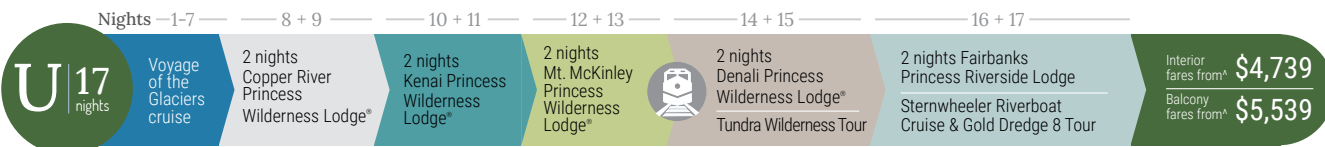
\*RA6 fares based on 5/21/22 departure on Majestic Princess® Taxes, Fees and Port Expenses of up to \$290 are additional and subject to change. See page 62 for full itinerary details.



\*SA6 fares based on 5/11/22 departure on Grand Princess® Taxes, Fees and Port Expenses of up to \$295 are additional and subject to change. See page 63 for full itinerary details.

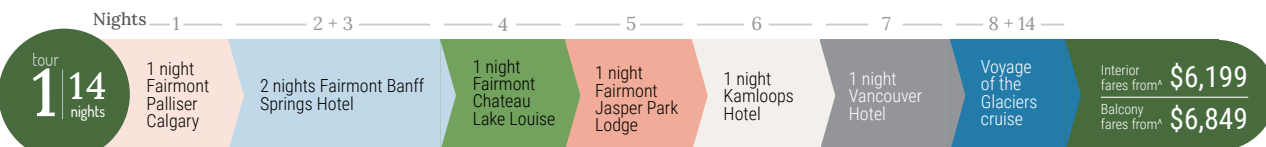


Taxes, Fees and Port Expenses of up to \$310 are additional and subject to change. See page 64 for full itinerary details.



\*UA1 fares based on 5/14/22 departure on Royal Princess® Taxes, Fees and Port Expenses of up to \$310 are additional and subject to change. See page 67 for full itinerary details.

## canadian rockies cruisetour



\*1A fares based on 5/7/22 departure on Royal Princess® Taxes, Fees and Port Expenses of up to \$490 are additional and subject to change. See page 68 for full itinerary details.

### Alaska

- Anchorage
- Mt. McKinley Princess Wilderness Lodge®
- Denali Princess Wilderness Lodge®

- Fairbanks
- Copper River Princess Wilderness Lodge®
- Kenai Princess Wilderness Lodge®

### Canadian Rockies

- Fairmont Palliser Calgary Hotel
- Fairmont Banff Springs Hotel
- Fairmont Chateau Lake Louise
- Fairmont Jasper Park Lodge
- Kamloops Hotel
- Vancouver Hotel



**LOOK FOR**  
the Direct-to-the-Wilderness® rail service symbol  
for itineraries featuring this exclusive service  
between our ships and our Denali-area lodges.



**ALSO LOOK FOR**  
the Princess Rail symbol for itineraries including  
this service. It features beautiful Alaska scenery,  
plus our warm Princess service.

\*On Your Own cruisetour options do not include Direct-to-the-Wilderness® rail service, Natural History Tour into Denali National Park or Sternwheeler Riverboat Cruise in Fairbanks.



# denali explorer

cruisetours

cruisetours

denali explorer



To say that Denali National Park is awe-inspiring is an understatement, and our most popular cruisetour type will reward you with the best experience possible. Pair your 7-day Voyage of the Glaciers cruise with three to six nights on land, whisked between port to lodge on our exclusive Direct-to-the-Wilderness® rail service (included on most itineraries). With two Denali-area wilderness lodges and more choices to extend your stay on land, here is your chance to make this your most memorable journey ever.

- 7-day Voyage of the Glaciers cruise
- Direct-to-the-Wilderness® rail service included on most itineraries
- Overnight stays at exclusive Princess® wilderness lodges
- Up to four nights in our Denali-area lodges
- Natural History Tour into Denali National Park (with an option to upgrade to the Tundra Wilderness Tour)
- Sternwheeler Riverboat Cruise and Gold Dredge 8 Tour in Fairbanks (if applicable)



## LOOK FOR

the Direct-to-the-Wilderness® rail service symbol for itineraries featuring this exclusive service between our ships and our Denali-area lodges.



## ALSO LOOK FOR

the Princess Rail symbol for itineraries including this service. It features beautiful Alaska scenery, plus our warm Princess service.

Princess is pleased to offer prepaid meal packages for the land portion of your Alaska cruisetour. Call your travel advisor or Princess at 1.800.774.6237 to book.

# Denali Explorer



## TOUR AB3 LAND before CRUISE

DAY	DESTINATION
By Land	
1	<b>Anchorage</b> – Explore the surprisingly metropolitan city of Anchorage by getting out to see the shops, restaurants and cultural attractions. <b>Overnight at Hotel Captain Cook.</b>
2	<b>Anchorage/Mt. McKinley</b> – Travel via motorcoach to Mt. McKinley Princess Wilderness Lodge* where the views are stunning. Once there, explore the many amenities our lodge has to offer. <b>Overnight at Mt. McKinley Princess Wilderness Lodge*.</b>
3	<b>Mt. McKinley/Denali</b> – This morning, enjoy a scenic motorcoach ride to Denali Princess Wilderness Lodge* just steps from Denali National Park. Take in an afternoon Natural History Tour to learn more about the park. <b>Overnight at Denali Princess Wilderness Lodge*.</b>
4	<b>Denali/Whittier/Embark Ship</b> – Enjoy a scenic rail journey through some of the best wilderness on our exclusive Direct-to-the-Wilderness* rail service toward Whittier, where your cruise ship awaits.

## By Sea Southbound Voyage of the Glaciers Cruise

5	Cruising Hubbard Glacier
6	Cruising Glacier Bay National Park
7	Skagway
8	Juneau
9	Ketchikan
10	Cruising the Inside Passage
11	Vancouver, B.C., Canada

## ON YOUR OWN

fares from \$1,449<sup>31</sup>Ask about cruisetour **ABX** (land before cruise)  
or **AAX** (land after cruise).For more details, visit [princess.com](http://princess.com)**OR** enjoy this cruisetour in reverse with your land tour after your cruise:

## TOUR AA3 LAND after CRUISE

<b>DAY 1</b>	Vancouver, B.C., Canada
<b>DAY 2</b>	Cruising the Inside Passage
<b>DAY 3</b>	Ketchikan
<b>DAY 4</b>	Juneau
<b>DAY 5</b>	Skagway
<b>DAY 6</b>	Cruising Glacier Bay National Park
<b>DAY 7</b>	Cruising College Fjord
<b>DAY 8</b>	Disembark Ship/Whittier/Denali
<b>DAY 9</b>	Denali/Mt. McKinley
<b>DAY 10</b>	Mt. McKinley/Anchorage
<b>DAY 11</b>	Fly home from Anchorage

## 2022 DEPARTURES

### TOUR AB3 LAND before CRUISE

Anchorage to Vancouver, B.C.

Majestic Princess <sup>32</sup>		Royal Princess <sup>32</sup>	
May 11, 25	Jul 6, 20	May 18	Aug 10, 24
Jun 8, 22	Aug 3, 17, 31	Jun 1, 15, 29	Sep 7
		Jul 13, 27	

Grand Princess <sup>32</sup>		
May 15, 29	Jul 10, 24	Sep 4
Jun 12, 26	Aug 7, 21	

	INTERIOR fares from <sup>37</sup>	\$2,009	Princess Plus fare includes* + drinks + wi-fi + crew incentive a value of <b>\$665</b>
	BALCONY fares from <sup>37</sup>	\$3,059	

### Tour AA3 LAND after CRUISE

Vancouver, B.C., to Anchorage

Majestic Princess <sup>32</sup>		Royal Princess <sup>32</sup>	
May 7, 21	Jul 2, 16, 30	May 14, 28	Aug 6, 20
Jun 4, 18	Aug 13, 27	Jun 11, 25	Sep 3
		Jul 9, 23	

Grand Princess <sup>32</sup>	
May 11, 25	Jul 6, 20
Jun 8, 22	Aug 3, 17, 31

	INTERIOR fares from <sup>37</sup>	\$1,829	Princess Plus fare includes* + drinks + wi-fi + crew incentive a value of <b>\$665</b>
	BALCONY fares from <sup>37</sup>	\$2,629	

<sup>31</sup>AA3 fares based on 5/14/22 departure on Royal Princess\* AB3 fares based on 5/15/22 departure on Grand Princess\*. Fares for other dates may vary. Taxes, Fees and Port Expenses of up to \$285 are additional and subject to change. See page 19 for more details.<sup>32</sup>Majestic Princess\* and Royal Princess\* voyages will sail on the west side of Vancouver Island.<sup>33</sup>On Your Own cruisetour options do not include Direct-to-the-Wilderness\* rail service and Natural History Tour into Denali National Park.<sup>34</sup>Certain restrictions apply, please refer to page 87 for complete terms, conditions and definitions that apply to all bookings.

Princess® MedallionClass® experience is only available on the cruise portion of this cruisetour.



cruisetour  
**B****10**  
nights

# Denali Explorer

✓ we recommend



## TOUR BB3 LAND before CRUISE

DAY	DESTINATION
By Land	
1	Fairbanks – Alaska's "Golden Heart City" of Fairbanks is a great introduction to the heart of this unique state. <b>Overnight at a Fairbanks hotel.</b>
2	Fairbanks/Denali – Enjoy a Sternwheeler Riverboat Cruise before heading via motorcoach for Denali National Park and Denali Princess Wilderness Lodge* – your first of two destinations in the Denali area. <b>Overnight at Denali Princess Wilderness Lodge.*</b>
3	Denali/Mt. McKinley – Your morning begins with a Natural History Tour into Denali National Park. Then, take a scenic motorcoach ride to your second of two destinations in Denali, Mt. McKinley Princess Wilderness Lodge.* <b>Overnight at Mt. McKinley Princess Wilderness Lodge.*</b>
4	Mt. McKinley/Whittier/Embark Ship – Our exclusive Direct-to-the-Wilderness* rail service takes you on a scenic rail journey through some of the best wilderness as you head toward Whittier, where your cruise ship awaits.
By Sea	<b>Southbound Voyage of the Glaciers Cruise</b>
5	Cruising Hubbard Glacier
6	Cruising Glacier Bay National Park
7	Skagway
8	Juneau
9	Ketchikan
10	Cruising the Inside Passage
11	Vancouver, B.C., Canada

## ON YOUR OWN

fares from \$1,499<sup>31</sup>Ask about cruisetour **BAX** (land after cruise)  
or **BBX** (land before cruise).For more details, visit [princess.com](http://princess.com)**OR** enjoy this cruisetour in reverse with  
your land tour after your cruise:

## TOUR BA3 LAND after CRUISE

- DAY 1** Vancouver, B.C., Canada  
**DAY 2** Cruising the Inside Passage  
**DAY 3** Ketchikan  
**DAY 4** Juneau  
**DAY 5** Skagway  
**DAY 6** Cruising Glacier Bay National Park  
**DAY 7** Cruising College Fjord  
**DAY 8** Disembark Ship/Whittier/Mt. McKinley  
**DAY 9** Mt. McKinley/Denali  
**DAY 10** Denali/Fairbanks  
**DAY 11** Fly home from Fairbanks

## 2022 DEPARTURES

### TOUR BB3 LAND before CRUISE Fairbanks to Vancouver, B.C.

Majestic Princess<sup>32</sup>May 11, 25 Jul 6, 20  
Jun 8, 22 Aug 3, 17, 31Royal Princess<sup>32</sup>May 18 Jul 13, 27 Sep 7  
Jun 1, 15, 29 Aug 10, 24Grand Princess<sup>32</sup>May 15, 29 Jul 10, 24 Sep 4  
Jun 12, 26 Aug 7, 21

	<b>INTERIOR</b> fares from <sup>31</sup>	<b>\$2,029</b>	Princess Plus fare includes <sup>33</sup> + drinks + wi-fi + crew incentive a value of <b>\$665</b>
	<b>BALCONY</b> fares from <sup>31</sup>	<b>\$2,929</b>	

### TOUR BA3 LAND after CRUISE Vancouver, B.C., to Fairbanks

Majestic Princess<sup>32</sup>May 7, 21 Jul 2, 16, 30  
Jun 4, 18 Aug 13, 27Royal Princess<sup>32</sup>May 14, 28 Jul 9, 23 Sep 3  
Jun 11, 25 Aug 6, 20Grand Princess<sup>32</sup>May 11, 25 Jul 6, 20  
Jun 8, 22 Aug 3, 17, 31

	<b>INTERIOR</b> fares from <sup>31</sup>	<b>\$1,909</b>	Princess Plus fare includes <sup>33</sup> + drinks + wi-fi + crew incentive a value of <b>\$665</b>
	<b>BALCONY</b> fares from <sup>31</sup>	<b>\$2,709</b>	

<sup>31</sup>BA3 fares based on 5/11/22 departure on Grand Princess; BB3 fares based on 5/18/22 departure on Royal Princess. Fares for other dates may vary. Taxes, Fees and Port Expenses of up to \$280 are additional and subject to change. See page 19 for more details.<sup>32</sup>Majestic Princess and Royal Princess voyages will sail on the west side of Vancouver Island.<sup>33</sup>On Your Own cruisetour options do not include Direct-to-the-Wilderness\* rail service, Natural History Tour into Denali National Park and Sternwheeler Riverboat Cruise in Fairbanks.<sup>34</sup>Certain restrictions apply, please refer to page 87 for complete terms, conditions and definitions that apply to all bookings.Princess® MedallionClass® experience is only  
available on the cruise portion of this cruisetour.

## Denali Explorer



## TOUR CB3 LAND before CRUISE

DAY	DESTINATION
By Land	
1	Fairbanks – It may be the most Alaska city of them all, friendly Fairbanks. And it's the perfect place to begin your Alaska vacation. Check in to your hotel and get out to explore the town. <b>Overnight at a Fairbanks hotel.</b>
2	Fairbanks/Denali – A cruise along the Chena River on a Sternwheeler Riverboat is about as authentic as it gets. Later, you'll head for Denali National Park via a scenic motorcoach trip to Denali Princess Wilderness Lodge. <b>Overnight at Denali Princess Wilderness Lodge.*</b>
3	Denali – You have a full day to get out into one of America's best national parks. This morning, a Natural History Tour serves as a wonderful introduction to the animals, plants and geological features found here. Later today, you may want to stop by the tour desk to plan an activity such as rafting or hiking. <b>Overnight at Denali Princess Wilderness Lodge.*</b>
4	Denali/Whittier/Embark Ship – Enjoy a scenic rail journey through some of the best wilderness in the Great Land on our exclusive Direct-to-the-Wilderness® rail service. Once in Whittier, you'll step from the train onto your ship for the beginning of your unforgettable cruise.
By Sea	Southbound Voyage of the Glaciers Cruise
5	Cruising Hubbard Glacier
6	Cruising Glacier Bay National Park
7	Skagway
8	Juneau
9	Ketchikan
10	Cruising the Inside Passage
11	Vancouver, B.C., Canada

**OR** enjoy this cruisetour in reverse with your land tour after your cruise:

## TOUR CA3 LAND after CRUISE

- DAY 1** Vancouver, B.C., Canada  
**DAY 2** Cruising the Inside Passage  
**DAY 3** Ketchikan  
**DAY 4** Juneau  
**DAY 5** Skagway  
**DAY 6** Cruising Glacier Bay National Park  
**DAY 7** Cruising College Fjord  
**DAY 8** Disembark Ship/Whittier/Denali  
**DAY 9** Denali  
**DAY 10** Denali/Fairbanks  
**DAY 11** Fly home from Fairbanks

## 2022 DEPARTURES

## TOUR CB3 LAND before CRUISE

Fairbanks to Vancouver, B.C.

Majestic Princess\*\*

May 11, 25      Jul 6, 20  
 Jun 8, 22      Aug 3, 17, 31

Royal Princess\*

May 18      Jul 13, 27      Sep 7  
 Jun 1, 15, 29      Aug 10, 24

Grand Princess\*

May 15, 29      Jul 10, 24      Sep 4  
 Jun 12, 26      Aug 7, 21

	INTERIOR fares from <sup>†</sup>	\$2,019	Princess Plus fare includes*
	BALCONY fares from <sup>†</sup>	\$3,069	+ drinks + wi-fi + crew incentive
			a value of <b>\$665</b>

## TOUR CA3 LAND after CRUISE

Vancouver, B.C., to Fairbanks

Majestic Princess\*\*

May 7, 21      Jul 2, 16, 30  
 Jun 4, 18      Aug 13, 27

Royal Princess\*

May 14, 28      Jul 9, 23      Sep 3  
 Jun 11, 25      Aug 6, 20

	INTERIOR fares from <sup>†</sup>	\$1,849	Princess Plus fare includes*
	BALCONY fares from <sup>†</sup>	\$2,649	+ drinks + wi-fi + crew incentive
			a value of <b>\$665</b>

\*CA3 fares based on 5/14/22 departure on Royal Princess; CB3 fares based on 5/15/22 departure on Grand Princess. Fares for other dates may vary. Taxes, Fees and Port Expenses of up to \$280 are additional and subject to change. See page 19 for more details.

\*\*Majestic Princess\* and Royal Princess\* voyages will sail on the west side of Vancouver Island.

†Certain restrictions apply, please refer to page 87 for complete terms, conditions and definitions that apply to all bookings.



Princess® MedallionClass® experience is only available on the cruise portion of this cruisetour.



cruisetour  
**D****11**  
nights

# Denali Explorer



## TOUR DB4 LAND before CRUISE

DAY	DESTINATION
By Land	
1	<b>Anchorage</b> – Explore this metropolitan city by getting out to see the shops, restaurants and attractions. <b>Overnight at Hotel Captain Cook.</b>
2	<b>Anchorage/Denali</b> – In the morning, you'll head for the Denali Princess Wilderness Lodge via a scenic motorcoach drive. Located just a mile from the entrance to Denali National Park, the lodge is the perfect base camp for exploring the area. <b>Overnight at Denali Princess Wilderness Lodge.</b>
3	<b>Denali</b> – You have a full day to get out into one of America's best national parks. Explore Denali National Park on a Tundra Wilderness Tour watching for glimpses of Denali and Denali's Big Five: moose, bears, caribou, Dall sheep and wolves. Later in the day, you may want to simply relax with a glass of wine on the deck overlooking the Nenana River. <b>Overnight at Denali Princess Wilderness Lodge.</b>
4	<b>Denali</b> – There's so much to do and see at the lodge. Enjoy a fun evening at Fannie Q's Saloon, named after a famed local homesteader, or sit outside at a fireside patio. Be sure to check out the Princess Village with our popular Christmas Cottage and Sugar Shack. <b>Overnight at Denali Princess Wilderness Lodge.</b>
5	<b>Denali/Whittier/Embark Ship</b> – Enjoy a scenic rail journey through some of the best wilderness in the Great Land on our exclusive Direct-to-the-Wilderness® rail service. Once in Whittier, you'll step from the train onto your ship for the beginning of your unforgettable cruise.
By Sea	
	<b>Southbound Voyage of the Glaciers Cruise</b>
6	Cruising Hubbard Glacier
7	Cruising Glacier Bay National Park
8	Skagway
9	Juneau
10	Ketchikan
11	Cruising the Inside Passage
12	Vancouver, B.C., Canada

**OR** enjoy this cruisetour in reverse with your land tour after your cruise:

## TOUR DA4 LAND after CRUISE

- DAY 1** Vancouver, B.C., Canada  
**DAY 2** Cruising the Inside Passage  
**DAY 3** Ketchikan  
**DAY 4** Juneau  
**DAY 5** Skagway  
**DAY 6** Cruising Glacier Bay National Park  
**DAY 7** Cruising College Fjord  
**DAY 8** Disembark Ship/Whittier/Denali  
**DAY 9** Denali  
**DAY 10** Denali  
**DAY 11** Denali/Anchorage  
**DAY 12** Fly home from Anchorage

## 2022 DEPARTURES

### TOUR DB4 LAND before CRUISE

Anchorage to Vancouver, B.C.

Majestic Princess<sup>MS</sup>

May 10, 24      Jul 5, 19  
 Jun 7, 21      Aug 2, 16, 30

Royal Princess<sup>MS</sup>

May 17, 31      Jul 12, 26      Sep 6  
 Jun 14, 28      Aug 9, 23

Grand Princess<sup>MS</sup>

May 14, 28      Jul 9, 23      Sep 3  
 Jun 11, 25      Aug 6, 20

	INTERIOR fares from <sup>17</sup>	<b>\$1,999</b>	Princess Plus fare includes <sup>18</sup> + drinks + wi-fi + crew incentive a value of <b>\$665</b>
	BALCONY fares from <sup>17</sup>	<b>\$3,049</b>	

### TOUR DA4 LAND after CRUISE

Vancouver, B.C., to Anchorage

Majestic Princess<sup>MS</sup>

May 7, 21      Jul 2, 16, 30  
 Jun 4, 18      Aug 13, 27

Grand Princess<sup>MS</sup>

May 11, 25      Jul 6, 20  
 Jun 8, 22      Aug 3, 17, 31

	INTERIOR fares from <sup>17</sup>	<b>\$1,829</b>	Princess Plus fare includes <sup>18</sup> + drinks + wi-fi + crew incentive a value of <b>\$665</b>
	BALCONY fares from <sup>17</sup>	<b>\$2,629</b>	

<sup>17</sup>DA4 fares based on 5/11/22 departure on Grand Princess® DB4 fares based on 5/14/22 departure on Grand Princess®. Fares for other dates may vary. Taxes, Fees and Port Expenses of up to \$295 are additional and subject to change. See page 19 for more details.

<sup>18</sup>Majestic Princess® and Royal Princess® voyages will sail on the west side of Vancouver Island.

<sup>19</sup>Certain restrictions apply, please refer to page 87 for complete terms, conditions and definitions that apply to all bookings.

Princess® MedallionClass® experience is only available on the cruise portion of this cruisetour.

cruisetour  
**E****11**  
nights

# Denali Explorer

✓ we recommend



## TOUR EB4 LAND before CRUISE

DAY	DESTINATION
By Land	
1	Anchorage – Spend the day at your own pace, discovering Alaska's largest city. <b>Overnight at Hotel Captain Cook.</b>
2	Anchorage/Mt. McKinley – Board your motorcoach for your journey along the George Parks Highway to Mt. McKinley Princess Wilderness Lodge*. Take in the sensational views of Denali with a glass of wine out on the expansive deck or from the treehouse. <b>Overnight at Mt. McKinley Princess Wilderness Lodge*.</b>
3	Mt. McKinley/Denali – Depart in the afternoon on a scenic motorcoach journey. Arrive at Denali Princess Wilderness Lodge* – set above the Nenana River Canyon – for a two-night stay. Denali National Park is just steps away. <b>Overnight at Denali Princess Wilderness Lodge*.</b>
4	Denali – Explore Denali National Park on a Natural History Tour, watching for glimpses of Denali as well as Denali's Big Five: moose, caribou, bears, wolves and Dall sheep. Later in the day, you may want to check out Fannie Q's Saloon, named after a famed local homesteader, or sit outside at a fireside patio. <b>Overnight at Denali Princess Wilderness Lodge*.</b>
5	Denali/Whittier/Embark Ship – Our exclusive Direct-to-the-Wilderness* rail service takes you on a scenic rail journey through some of the best wilderness as you head toward Whittier, where your cruise ship awaits.
By Sea	Southbound Voyage of the Glaciers Cruise
6	Cruising Hubbard Glacier
7	Cruising Glacier Bay National Park
8	Skagway
9	Juneau
10	Ketchikan
11	Cruising the Inside Passage
12	Vancouver, B.C., Canada

## ON YOUR OWN

fares from \$1,599<sup>31</sup>Ask about cruisetour **EAX** (land after cruise)  
or **EBX** (land before cruise).For more details, visit [princess.com](http://princess.com)**OR** enjoy this cruisetour in reverse with  
your land tour after your cruise:

## TOUR EA4 LAND after CRUISE

- DAY 1** Vancouver, B.C., Canada  
**DAY 2** Cruising the Inside Passage  
**DAY 3** Ketchikan  
**DAY 4** Juneau  
**DAY 5** Skagway  
**DAY 6** Cruising Glacier Bay National Park  
**DAY 7** Cruising College Fjord  
**DAY 8** Disembark Ship/Whittier/Denali  
**DAY 9** Denali  
**DAY 10** Denali/Mt. McKinley  
**DAY 11** Mt. McKinley/Anchorage  
**DAY 12** Fly home from Anchorage

## 2022 DEPARTURES

### TOUR EB4 LAND before CRUISE Anchorage to Vancouver, B.C.

Majestic Princess<sup>32</sup>

May 24	Jul 5, 19
Jun 7, 21	Aug 2, 16, 30

Royal Princess<sup>32</sup>

May 17, 31	Jul 12, 26	Sep 6
Jun 14, 28	Aug 9, 23	

Grand Princess<sup>32</sup>

May 14, 28	Jul 9, 23	Sep 3
Jun 11, 25	Aug 6, 20	

	INTERIOR fares from <sup>37</sup>	<b>\$2,099</b>	Princess Plus fare includes <sup>38</sup> + drinks + wi-fi + crew incentive a value of <b>\$665</b>
	BALCONY fares from <sup>37</sup>	<b>\$3,149</b>	

### TOUR EA4 LAND after CRUISE Vancouver, B.C., to Anchorage

Majestic Princess<sup>32</sup>

May 7, 21	Jul 2, 16, 30
Jun 4, 18	Aug 13, 27

Royal Princess<sup>32</sup>

May 14, 28	Jul 9, 23	Sep 3
Jun 11, 25	Aug 6, 20	

Grand Princess<sup>32</sup>

May 11, 25	Jul 6, 20
Jun 8, 22	Aug 3, 17, 31

	INTERIOR fares from <sup>37</sup>	<b>\$1,879</b>	Princess Plus fare includes <sup>38</sup> + drinks + wi-fi + crew incentive a value of <b>\$665</b>
	BALCONY fares from <sup>37</sup>	<b>\$2,679</b>	

<sup>31</sup>EA4 fares based on 5/11/22 departure on Grand Princess\*. EB4 fares based on 5/14/22 departure on Grand Princess\*. Fares for other dates may vary. Taxes, Fees and Port Expenses of up to \$290 are additional and subject to change. See page 19 for more details.

<sup>32</sup>Majestic Princess\* and Royal Princess\* voyages will sail on the west side of Vancouver Island.

<sup>33</sup>On Your Own cruisetour options do not include Direct-to-the-Wilderness\* rail service and Natural History Tour into Denali National Park.

<sup>34</sup>Certain restrictions apply, please refer to page 87 for complete terms, conditions and definitions that apply to all bookings.



Princess\* MedallionClass\* experience is only available on the cruise portion of this cruisetour.

cruisetours

denali explorer







# Denali Explorer



## TOUR FB4 LAND before CRUISE

DAY	DESTINATION
By Land	
1	<b>Fairbanks</b> – Begin your Alaska vacation in friendly Fairbanks. Check in to your hotel and get out to see some of the town. <b>Overnight at a Fairbanks hotel.</b>
2	<b>Fairbanks/Denali</b> – Enjoy a Sternwheeler Riverboat Cruise before heading for Denali National Park via motorcoach, to arrive at Denali Princess Wilderness Lodge® – your first of two destinations in Denali. <b>Overnight at Denali Princess Wilderness Lodge®.</b>
3	<b>Denali</b> – You have a full day to get out into one of America's best national parks. In the morning, you may want to stop by the tour desk to plan an activity such as rafting or hiking. Later in the afternoon, a Natural History Tour serves as a wonderful introduction to the animals, plants and geological features found here. <b>Overnight at Denali Princess Wilderness Lodge®.</b>
4	<b>Denali/Mt. McKinley</b> – Depart via motorcoach to Mt. McKinley Princess Wilderness Lodge®. Delight in the many amenities our lodge has to offer, such as the treehouse, Hudson Theater and Great Room with a wood-burning fireplace. <b>Overnight at Mt. McKinley Princess Wilderness Lodge®.</b>
5	<b>Mt. McKinley/Whittier/Embark Ship</b> – Our exclusive Direct-to-the-Wilderness® rail service takes you on a scenic rail journey through some of the best wilderness as you head toward Whittier, where your cruise ship awaits.
By Sea	<b>Southbound Voyage of the Glaciers Cruise</b>
6	Cruising Hubbard Glacier
7	Cruising Glacier Bay National Park
8	Skagway
9	Juneau
10	Ketchikan
11	Cruising the Inside Passage
12	Vancouver, B.C., Canada

## ON YOUR OWN

fares from \$1,649<sup>31</sup>Ask about cruisetour **FAX** (land after cruise)  
or **FBX** (land before cruise).For more details, visit [princess.com](http://princess.com)**OR** enjoy this cruisetour in reverse with  
your land tour after your cruise:

## TOUR FA4 LAND after CRUISE

- DAY 1** Vancouver, B.C., Canada
- DAY 2** Cruising the Inside Passage
- DAY 3** Ketchikan
- DAY 4** Juneau
- DAY 5** Skagway
- DAY 6** Cruising Glacier Bay National Park
- DAY 7** Cruising College Fjord
- DAY 8** Disembark Ship/Whittier/Mt. McKinley
- DAY 9** Mt. McKinley/Denali
- DAY 10** Denali
- DAY 11** Denali/Fairbanks
- DAY 12** Fly home from Fairbanks

## 2022 DEPARTURES

### TOUR FB4 LAND before CRUISE Fairbanks to Vancouver, B.C.

Majestic Princess®

May 10, 24	Jul 5, 19
Jun 7, 21	Aug 2, 16, 30

Royal Princess®

May 17, 31	Jul 12, 26	Sep 6
Jun 14, 28	Aug 9, 23	

Grand Princess®

May 14, 28	Jul 9, 23	Sep 3
Jun 11, 25	Aug 6, 20	

	<b>INTERIOR</b> fares from <sup>37</sup>	<b>\$2,099</b>	Princess Plus fare includes* + drinks + wi-fi + crew incentive a value of <b>\$665</b>
	<b>BALCONY</b> fares from <sup>37</sup>	<b>\$3,149</b>	

### TOUR FA4 LAND after CRUISE Vancouver, B.C., to Fairbanks

Majestic Princess®

May 7, 21	Jul 2, 16, 30
Jun 4, 18	Aug 13, 27

Royal Princess®

May 14, 28	Jul 9, 23	Sep 3
Jun 11, 25	Aug 6, 20	

Grand Princess®

May 11, 25	Jul 6, 20
Jun 8, 22	Aug 3, 17, 31

	<b>INTERIOR</b> fares from <sup>37</sup>	<b>\$1,899</b>	Princess Plus fare includes* + drinks + wi-fi + crew incentive a value of <b>\$665</b>
	<b>BALCONY</b> fares from <sup>37</sup>	<b>\$2,699</b>	

\*FA4 fares based on 5/11/22 departure on Grand Princess®. FB4 fares based on 5/14/22 departure on Grand Princess®. Fares for other dates may vary. Taxes, Fees and Port Expenses of up to \$285 are additional and subject to change. See page 19 for more details.

†Majestic Princess® and Royal Princess® voyages will sail on the west side of Vancouver Island.

‡On Your Own cruisetour options do not include Direct-to-the-Wilderness® rail service, Natural History Tour into Denali National Park and Sternwheeler Riverboat Cruise in Fairbanks.

§Certain restrictions apply, please refer to page 87 for complete terms, conditions and definitions that apply to all bookings.

Princess® MedallionClass® experience is only available on the cruise portion of this cruisetour.



## Denali Explorer



## TOUR GB4 LAND before CRUISE

DAY	DESTINATION
By Land	
1	Fairbanks – Arrive in Fairbanks and settle in for two nights. Overnight at a Fairbanks hotel.
2	Fairbanks – Spend a wonderful day in the “Golden Heart City.” An authentic Sternwheeler Riverboat Cruise takes you to an Athabaskan fishing village and sled dog kennels with a hearty miner’s lunch included. You’ll also enjoy a tour of Gold Dredge 8, where you can try panning for gold. Overnight at a Fairbanks hotel.
3	Fairbanks/Denali – Travel by motorcoach to Denali Princess Wilderness Lodge <sup>®</sup> with incredible views all along the way. Once there, check out the deck and vistas of the Nenana River Canyon. Overnight at Denali Princess Wilderness Lodge <sup>®</sup> .
4	Denali – A morning Natural History Tour into the park sets the day’s tone. In the afternoon, plan your own activity, like a helicopter adventure or whitewater rafting in the Nenana Gorge. Overnight at Denali Princess Wilderness Lodge <sup>®</sup> .
5	Denali/Whittier/Embark Ship – Enjoy a scenic rail journey through some of the best wilderness in the Great Land on our exclusive Direct-to-the-Wilderness <sup>®</sup> rail service. You’ll step right off your rail car and onto your waiting ship in Whittier.
By Sea	Southbound Voyage of the Glaciers Cruise
6	Cruising Hubbard Glacier
7	Cruising Glacier Bay National Park
8	Skagway
9	Juneau
10	Ketchikan
11	Cruising the Inside Passage
12	Vancouver, B.C., Canada

**OR** enjoy this cruisetour in reverse with your land tour after your cruise:

## TOUR GA4 LAND after CRUISE

- DAY 1** Vancouver, B.C., Canada  
**DAY 2** Cruising the Inside Passage  
**DAY 3** Ketchikan  
**DAY 4** Juneau  
**DAY 5** Skagway  
**DAY 6** Cruising Glacier Bay National Park  
**DAY 7** Cruising College Fjord  
**DAY 8** Disembark Ship/Whittier/Denali  
**DAY 9** Denali  
**DAY 10** Denali/Fairbanks  
**DAY 11** Fairbanks  
**DAY 12** Fly home from Fairbanks

## 2022 DEPARTURES

TOUR GB4 LAND before CRUISE  
Fairbanks to Vancouver, B.C.Majestic Princess<sup>®</sup>

May 10, 24 Jul 5, 19  
 Jun 7, 21 Aug 2, 16, 30

Royal Princess<sup>®</sup>

May 17, 31 Jul 12, 26 Sep 6  
 Jun 14, 28 Aug 9, 23

Grand Princess<sup>®</sup>

May 14, 28 Jul 9, 23 Sep 3  
 Jun 11, 25 Aug 6, 20

	INTERIOR fares from <sup>17</sup>	\$2,019	Princess Plus fare includes <sup>18</sup> + drinks + wi-fi + crew incentive a value of \$665
	BALCONY fares from <sup>17</sup>	\$3,069	

TOUR GA4 LAND after CRUISE  
Vancouver, B.C., to FairbanksMajestic Princess<sup>®</sup>

May 7, 21 Jul 2, 16, 30  
 Jun 4, 18 Aug 13, 27

Royal Princess<sup>®</sup>

May 14, 28 Jul 9, 23 Sep 3  
 Jun 11, 25 Aug 6, 20

	INTERIOR fares from <sup>17</sup>	\$1,859	Princess Plus fare includes <sup>18</sup> + drinks + wi-fi + crew incentive a value of \$665
	BALCONY fares from <sup>17</sup>	\$2,659	

<sup>17</sup>G4 fares based on 5/14/22 departure on Royal Princess<sup>®</sup>; GB4 fares based on 5/14/22 departure on Grand Princess<sup>®</sup>. Fares for other dates may vary. Taxes, Fees and Port Expenses of up to \$285 are additional and subject to change. See page 19 for more details.

<sup>18</sup>Majestic Princess<sup>®</sup> and Royal Princess<sup>®</sup> voyages will sail on the west side of Vancouver Island.

<sup>19</sup>Certain restrictions apply, please refer to page 87 for complete terms, conditions and definitions that apply to all bookings.

Princess<sup>®</sup> MedallionClass<sup>®</sup> experience is only available on the cruise portion of this cruisetour.

**TOUR HB5** LAND before CRUISE

DAY	DESTINATION
By Land	
1	<b>Anchorage</b> – Spend the day exploring Alaska's largest city. Anchorage offers countless restaurants, shops and fascinating cultural attractions. <b>Overnight at Hotel Captain Cook.</b>
2	<b>Anchorage/Mt. McKinley</b> – Board a motorcoach for your journey along the George Parks Highway. You may catch your first views of incredible Denali along the way. Once you arrive at Mt. McKinley Princess Wilderness Lodge*, take in the sensational views with a glass of wine in the Great Room or on the expansive deck. <b>Overnight at Mt. McKinley Princess Wilderness Lodge*.</b>
3	<b>Mt. McKinley</b> – You have a full day to spend however you choose. Visit the tour desk for ideas about excursions. Explore the nature trails for sweeping vistas. Relax in our unique treehouse or visit the Hudson Theater to hear tales from Denali mountain climbers. <b>Overnight at Mt. McKinley Princess Wilderness Lodge*.</b>
4	<b>Mt. McKinley/Denali</b> – Arrive by motorcoach at Denali Princess Wilderness Lodge* – set above the Nenana River Canyon – for a two-night stay. Denali National Park is just steps away. <b>Overnight at Denali Princess Wilderness Lodge*.</b>
5	<b>Denali</b> – Today's highlight is a Natural History Tour into the park, introducing you to its plants, animals and geography. Later, you'll have time to choose from excursions like rafting or flightseeing. <b>Overnight at Denali Princess Wilderness Lodge*.</b>
6	<b>Denali/Whittier/Embark Ship</b> – Our exclusive Direct-to-the-Wilderness® rail service takes you on a scenic rail journey through some of the best wilderness as you head toward Whittier, where your cruise ship awaits.
By Sea	<b>Southbound Voyage of the Glaciers Cruise</b>
7	Cruising Hubbard Glacier
8	Cruising Glacier Bay National Park
9	Skagway
10	Juneau
11	Ketchikan
12	Cruising the Inside Passage
13	Vancouver, B.C., Canada

**OR** enjoy this cruisetour in reverse with your land tour after your cruise:

**TOUR HA5** LAND after CRUISE

- DAY 1** Vancouver, B.C., Canada  
**DAY 2** Cruising the Inside Passage  
**DAY 3** Ketchikan  
**DAY 4** Juneau  
**DAY 5** Skagway  
**DAY 6** Cruising Glacier Bay National Park  
**DAY 7** Cruising College Fjord  
**DAY 8** Disembark Ship/Whittier/Denali  
**DAY 9** Denali  
**DAY 10** Denali/Mt. McKinley  
**DAY 11** Mt. McKinley  
**DAY 12** Mt. McKinley/Anchorage  
**DAY 13** Fly home from Anchorage

**2022 DEPARTURES****TOUR HB5 LAND before CRUISE**  
Anchorage to Vancouver, B.C.**Majestic Princess**<sup>\*\*</sup>

May 23 Jul 4, 18  
 Jun 6, 20 Aug 1, 15, 29

**Grand Princess**<sup>\*</sup>

May 13, 27 Jul 8, 22 Sep 2  
 Jun 10, 24 Aug 5, 19

	<b>INTERIOR</b> fares from <sup>17</sup>	<b>\$2,219</b>	Princess Plus fare includes <sup>18</sup> + drinks + wi-fi + crew incentive a value of <b>\$665</b>
	<b>BALCONY</b> fares from <sup>17</sup>	<b>\$3,269</b>	

**TOUR HA5 LAND after CRUISE**  
Vancouver, B.C. to Anchorage**Majestic Princess**<sup>\*\*</sup>

May 7, 21 Jul 2, 16, 30  
 Jun 4, 18 Aug 13, 27

**Royal Princess**<sup>\*</sup>

May 14, 28 Jul 9, 23  
 Jun 11, 25 Aug 6, 20

**Grand Princess**<sup>\*</sup>

May 11, 25 Jul 6, 20  
 Jun 8, 22 Aug 3, 17, 31

	<b>INTERIOR</b> fares from <sup>17</sup>	<b>\$1,949</b>	Princess Plus fare includes <sup>18</sup> + drinks + wi-fi + crew incentive a value of <b>\$665</b>
	<b>BALCONY</b> fares from <sup>17</sup>	<b>\$2,749</b>	

<sup>17</sup>HA5 fares based on 5/11/22 departure on Grand Princess\*; HB5 fares based on 5/13/22 departure on Grand Princess\*. Fares for other dates may vary. Taxes, Fees and Port Expenses of up to \$290 are additional and subject to change. See page 19 for more details.

<sup>18</sup>Majestic Princess\* and Royal Princess\* voyages will sail on the west side of Vancouver Island.

<sup>19</sup>Certain restrictions apply, please refer to page 87 for complete terms, conditions and definitions that apply to all bookings.

Princess® MedallionClass® experience is only available on the cruise portion of this cruisetour.



## Denali Explorer



## TOUR IB5 LAND before CRUISE

DAY	DESTINATION
By Land	
1	Fairbanks – Alaska's "Golden Heart City" of Fairbanks is a great introduction to the heart of this unique state. <b>Overnight at a Fairbanks hotel.</b>
2	Fairbanks/Denali – Enjoy a Sternwheeler Riverboat Cruise before heading for Denali National Park and Denali Princess Wilderness Lodge* via motorcoach – your first of two destinations in the Denali area. <b>Overnight at Denali Princess Wilderness Lodge*.</b>
3	Denali – Explore Denali National Park on a Natural History Tour, watching for glimpses of Denali as well as Denali's Big Five: moose, caribou, bears, wolves and Dall sheep. Later today, you may want to check out Fannie Q's Saloon, named after a famed local homesteader, or sit outside at a fireside patio. <b>Overnight at Denali Princess Wilderness Lodge*.</b>
4	Denali/Mt. McKinley – Depart via motorcoach to Mt. McKinley Princess Wilderness Lodge.* Delight in the many amenities our lodge has to offer, such as the treehouse, Hudson Theater and the Great Room with a wood-burning fireplace. <b>Overnight at Mt. McKinley Princess Wilderness Lodge*.</b>
5	Mt. McKinley – You have a full day to spend however you choose. Visit the tour desk for ideas about excursions. Or explore the nature trails for sweeping vistas. <b>Overnight at Mt. McKinley Princess Wilderness Lodge*.</b>
6	Mt. McKinley/Whittier/Embark Ship – Our exclusive Direct-to-the-Wilderness* rail service takes you on a scenic rail journey through some of the best wilderness as you head toward Whittier, where your cruise ship awaits.
By Sea	
	Southbound Voyage of the Glaciers Cruise
7	Cruising Hubbard Glacier
8	Cruising Glacier Bay National Park
9	Skagway
10	Juneau
11	Ketchikan
12	Cruising the Inside Passage
13	Vancouver, B.C., Canada

**OR** enjoy this cruisetour in reverse with your land tour after your cruise:

## TOUR IA5 LAND after CRUISE

- DAY 1** Vancouver, B.C., Canada
- DAY 2** Cruising the Inside Passage
- DAY 3** Ketchikan
- DAY 4** Juneau
- DAY 5** Skagway
- DAY 6** Cruising Glacier Bay National Park
- DAY 7** Cruising College Fjord
- DAY 8** Disembark Ship/Whittier/Mt. McKinley
- DAY 9** Mt. McKinley
- DAY 10** Mt. McKinley/Denali
- DAY 11** Denali
- DAY 12** Denali/Fairbanks
- DAY 13** Fly home from Fairbanks

## 2022 DEPARTURES

TOUR IB5 LAND before CRUISE  
Fairbanks to Vancouver, B.C.Majestic Princess<sup>®</sup>

May 23	Jul 4, 18
Jun 6, 20	Aug 1, 15, 29

Royal Princess<sup>®</sup>

May 16, 30	Jul 11, 25	Sep 5
Jun 13, 27	Aug 8, 22	

Grand Princess<sup>®</sup>

May 13, 27	Jul 8, 22	Sep 2
Jun 10, 24	Aug 5, 19	



**INTERIOR**  
fares from<sup>17</sup> **\$2,199**

**BALCONY**  
fares from<sup>17</sup> **\$3,249**

Princess Plus fare includes<sup>18</sup>  
+ drinks + wi-fi + crew incentive  
a value of **\$665**

TOUR IA5 LAND after CRUISE  
Vancouver, B.C., to FairbanksMajestic Princess<sup>®</sup>

May 7, 21	Jul 2, 16, 30
Jun 4, 18	Aug 13, 27

Royal Princess<sup>®</sup>

May 14, 28	Jul 9, 23	Sep 3
Jun 11, 25	Aug 6, 20	

Grand Princess<sup>®</sup>

May 11, 25	Jul 6, 20
Jun 8, 22	Aug 3, 17, 31



**INTERIOR**  
fares from<sup>17</sup> **\$2,079**

**BALCONY**  
fares from<sup>17</sup> **\$2,879**

Princess Plus fare includes<sup>18</sup>  
+ drinks + wi-fi + crew incentive  
a value of **\$665**

<sup>17</sup>IA5 fares based on 5/11/22 departure on Grand Princess.\* IB5 fares based on 5/13/22 departure on Grand Princess.\* Fares for other dates may vary. Taxes, Fees and Port Expenses of up to \$285 are additional and subject to change. See page 19 for more details.

<sup>18</sup>Majestic Princess<sup>®</sup> and Royal Princess<sup>®</sup> voyages will sail on the west side of Vancouver Island.

<sup>19</sup>Certain restrictions apply, please refer to page 87 for complete terms, conditions and definitions that apply to all bookings.



Princess<sup>®</sup> MedallionClass<sup>®</sup> experience is only available on the cruise portion of this cruisetour.

# Denali Explorer



## TOUR JB5 LAND before CRUISE

DAY	DESTINATION
By Land	
1	<b>Fairbanks</b> – Begin your vacation with a wonderful one-night stay in Fairbanks. <b>Overnight at a Fairbanks hotel.</b>
2	<b>Fairbanks/Denali</b> – Enjoy a sternwheeler riverboat cruise before traveling to Denali Princess Wilderness Lodge® via motorcoach. Once there, check out the deck and vistas of the Nenana River Canyon. <b>Overnight at Denali Princess Wilderness Lodge®</b>
3	<b>Denali</b> – Explore Denali National Park on a Natural History Tour, watching for glimpses of Denali as well as Denali's Big Five: moose, caribou, bears, wolves and Dall sheep. Later today, you may want to check out Fannie Q's Saloon, named after a famed local homesteader, or sit outside at a fireside patio. <b>Overnight at Denali Princess Wilderness Lodge®</b>
4	<b>Denali/Mt. McKinley</b> – In the morning, you'll travel by Princess rail service to Denali State Park for an overnight stay at Mt. McKinley Princess Wilderness Lodge®, where the views are nothing short of inspiring. Consider an optional excursion or simply relax at the lodge. <b>Overnight at Mt. McKinley Princess Wilderness Lodge®</b>
5	<b>Mt. McKinley/Anchorage</b> Motorcoach to Anchorage, Alaska's largest city, for an overnight stay. <b>Overnight at Hotel Captain Cook.</b>
6	<b>Anchorage/Whittier/Embark Ship</b> – Motorcoach to Whittier where your cruise ship awaits, with a stop at the Alaska Wildlife Conservation Center.
By Sea	<b>Southbound Voyage of the Glaciers Cruise</b>
7	Cruising Hubbard Glacier
8	Cruising Glacier Bay National Park
9	Skagway
10	Juneau
11	Ketchikan
12	Cruising the Inside Passage
13	Vancouver, B.C., Canada

**OR** enjoy this cruisetour in reverse with your land tour after your cruise:

## TOUR JA5 LAND after CRUISE

- DAY 1** Vancouver, B.C., Canada
- DAY 2** Cruising the Inside Passage
- DAY 3** Ketchikan
- DAY 4** Juneau
- DAY 5** Skagway
- DAY 6** Glacier Bay National Park Scenic Cruising
- DAY 7** College Fjord Scenic Cruising
- DAY 8** Disembark Ship/Whittier/Anchorage
- DAY 9** Anchorage/Mt. McKinley
- DAY 10** Mt. McKinley/Denali
- DAY 11** Denali
- DAY 12** Denali/Fairbanks
- DAY 13** Fly home from Fairbanks

## 2022 DEPARTURES

### TOUR JB5 LAND before CRUISE Fairbanks to Vancouver, B.C.

Majestic Princess®

May 23 Jul 4, 18  
Jun 6, 20 Aug 1, 15, 29

Royal Princess®

May 16, 30 Jul 11, 25 Sep 5  
Jun 13, 27 Aug 8, 22

Grand Princess®

May 13, 27 Jul 8, 22 Sep 2  
Jun 10, 24 Aug 5, 19

	<b>INTERIOR</b> fares from <sup>17</sup>	<b>\$2,259</b>	Princess Plus fare includes <sup>18</sup> + drinks + wi-fi + crew incentive a value of <b>\$665</b>
	<b>BALCONY</b> fares from <sup>17</sup>	<b>\$3,309</b>	

### TOUR JA5 LAND after CRUISE Vancouver, B.C., to Fairbanks

Majestic Princess®

May 7, 21 Jul 2, 16, 30  
Jun 4, 18 Aug 13, 27

Royal Princess®

May 14, 28 Jul 9, 23 Sep 3  
Jun 11, 25 Aug 6, 20

Grand Princess®

May 11, 25 Jul 6, 20  
Jun 8, 22 Aug 3, 17, 31

	<b>INTERIOR</b> fares from <sup>17</sup>	<b>\$1,829</b>	Princess Plus fare includes <sup>18</sup> + drinks + wi-fi + crew incentive a value of <b>\$665</b>
	<b>BALCONY</b> fares from <sup>17</sup>	<b>\$2,629</b>	

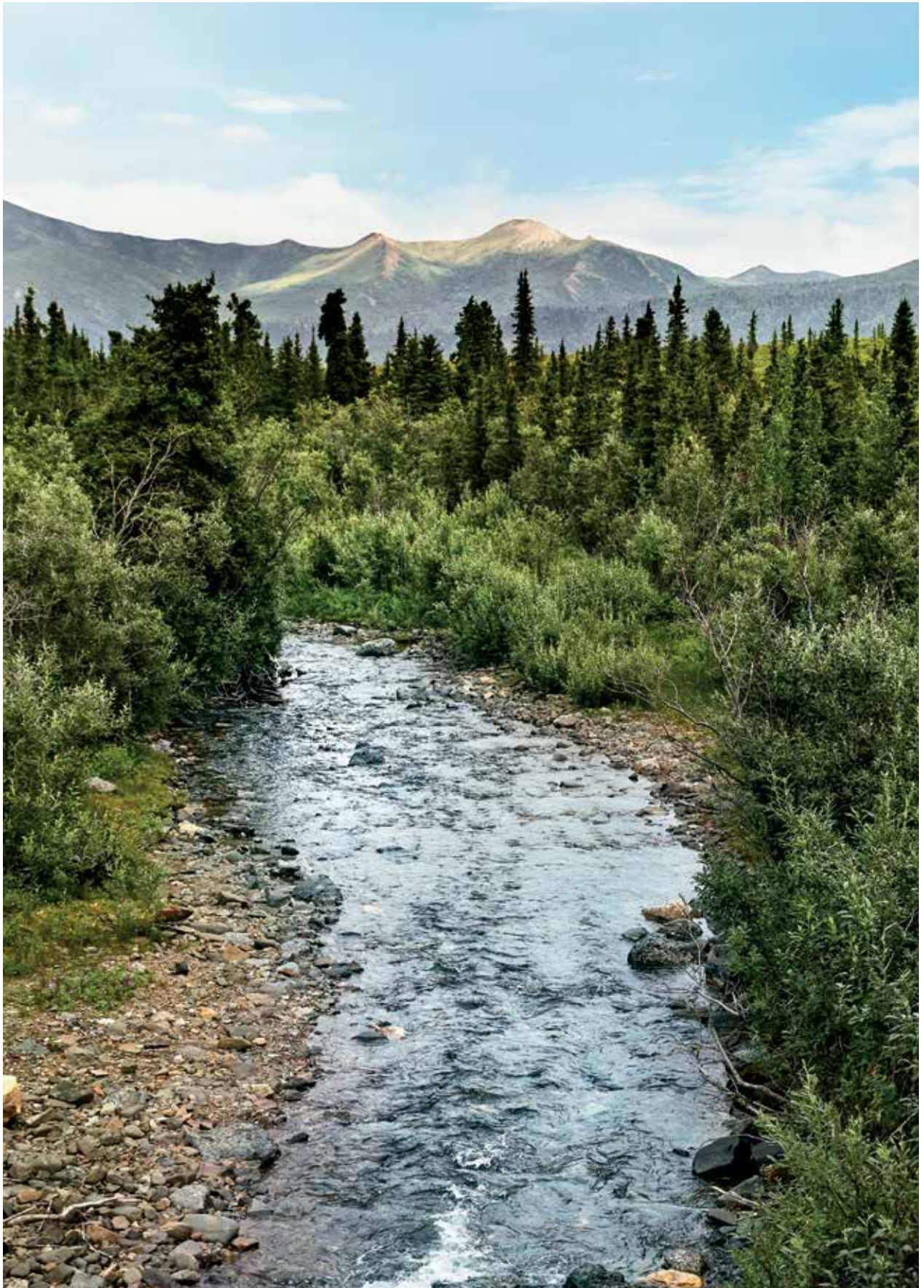
<sup>17</sup>JAS fares based on 5/14/22 departure on Royal Princess®. JB5 fares based on 5/13/22 departure on Grand Princess®. Fares for other dates may vary. Taxes, Fees and Port Expenses of up to \$300 are additional and subject to change. See page 19 for more details.

<sup>18</sup>Majestic Princess® and Royal Princess® voyages will sail on the west side of Vancouver Island.

<sup>19</sup>Certain restrictions apply, please refer to page 87 for complete terms, conditions and definitions that apply to all bookings.

Princess® MedallionClass® experience is only available on the cruise portion of this cruisetour.





**TOUR KB6 LAND before CRUISE**

DAY	DESTINATION
By Land	
1	<b>Fairbanks</b> – Start your vacation with a two-night stay in the friendly city of Fairbanks. <b>Overnight at a Fairbanks hotel.</b>
2	<b>Fairbanks</b> – Embark on an authentic Sternwheeler Riverboat Cruise and Gold Dredge 8 Tour, which features a chance to pan for gold. A hearty lunch is included. The evening is yours to spend however you choose. <b>Overnight at a Fairbanks hotel.</b>
3	<b>Fairbanks/Denali</b> – Travel to Denali Princess Wilderness Lodge* via motorcoach. Once there, check out the deck and vistas of the Nenana River Canyon. <b>Overnight at Denali Princess Wilderness Lodge*.</b>
4	<b>Denali</b> – In the morning, you'll have time to choose from excursions like rafting or flightseeing. Later, enjoy a Natural History Tour into Denali National Park to learn about its wildlife, plants and geography. <b>Overnight at Denali Princess Wilderness Lodge*.</b>
5	<b>Denali/Mt. McKinley</b> – In the morning, you'll travel by motorcoach to Denali State Park for an overnight stay at Mt. McKinley Princess Wilderness Lodge,* where the views are awe-inspiring. Consider an optional excursion or relax at the lodge. <b>Overnight at Mt. McKinley Princess Wilderness Lodge*.</b>
6	<b>Mt. McKinley</b> – Visit the tour desk for ideas about excursions. Head out on a nature walk with family and friends, visit our unique Treehouse for sweeping views and sip a glass of wine with loved ones by our fireside patio. <b>Overnight at Mt. McKinley Princess Wilderness Lodge*.</b>
7	<b>Mt. McKinley/Whittier/Embark Ship</b> – Our exclusive Direct-to-the-Wilderness* rail service takes you on a scenic rail journey through some of the best wilderness as you head toward Whittier, where your cruise ship awaits.
By Sea	
8	<b>Southbound Voyage of the Glaciers Cruise</b>
9	Cruising Hubbard Glacier
10	Cruising Glacier Bay National Park
11	Skagway
12	Juneau
13	Ketchikan
14	Cruising the Inside Passage
	Vancouver, B.C., Canada

**OR** enjoy this cruisetour in reverse with your land tour after your cruise:

**TOUR KA6 LAND after CRUISE**

- DAY 1** Vancouver, B.C., Canada
- DAY 2** Cruising the Inside Passage
- DAY 3** Ketchikan
- DAY 4** Juneau
- DAY 5** Skagway
- DAY 6** Cruising Glacier Bay National Park
- DAY 7** Cruising College Fjord
- DAY 8** Disembark Ship/Whittier/Mt. McKinley
- DAY 9** Mt. McKinley
- DAY 10** Mt. McKinley/Denali
- DAY 11** Denali
- DAY 12** Denali/Fairbanks
- DAY 13** Fairbanks
- DAY 14** Fly home from Fairbanks

**2022 DEPARTURES****TOUR KB6 LAND before CRUISE***Fairbanks to Vancouver, B.C.***Majestic Princess\*\***

May 22	Jul 3, 17, 31
Jun 5, 19	Aug 14, 28

**Royal Princess\***

May 15, 29	Jul 10, 24	Sep 4
Jun 12, 26	Aug 7, 21	

**Grand Princess\***

May 12, 26	Jul 7, 21	Sep 1
Jun 9, 23	Aug 4, 18	

	<b>INTERIOR</b> fares from <sup>17</sup>	<b>\$2,849</b>	Princess Plus fare includes*
	<b>BALCONY</b> fares from <sup>17</sup>	<b>\$3,899</b>	+ drinks + wi-fi + crew incentive
			a value of <b>\$665</b>

**TOUR KA6 LAND after CRUISE***Vancouver, B.C., to Fairbanks***Majestic Princess\*\***

May 7, 21	Jul 2, 16, 30
Jun 4, 18	Aug 13, 27

**Royal Princess\***

May 14, 28	Jul 9, 23	Sep 3
Jun 11, 25	Aug 6, 20	

**Grand Princess\***

May 11, 25	Jul 6, 20
Jun 8, 22	Aug 3, 17, 31

	<b>INTERIOR</b> fares from <sup>17</sup>	<b>\$2,439</b>	Princess Plus fare includes*
	<b>BALCONY</b> fares from <sup>17</sup>	<b>\$3,239</b>	+ drinks + wi-fi + crew incentive
			a value of <b>\$665</b>

<sup>17</sup>KA6 fares based on 5/11/22 departure on Grand Princess; KB6 fares based on 5/12/22 departure on Grand Princess; Fares for other dates may vary. Taxes, Fees and Port Expenses of up to \$295 are additional and subject to change. See page 19 for more details.

\*Majestic Princess\* and Royal Princess\* voyages will sail on the west side of Vancouver Island.

\*\*Certain restrictions apply, please refer to page 87 for complete terms, conditions and definitions that apply to all bookings.

Princess® MedallionClass® experience is only available on the cruise portion of this cruisetour.



# off the beaten path

## cruisetours



Travel to Alaska's remote parks, in addition to Denali, on an Off the Beaten Path cruisetour. Witness the extraordinary landscapes of Wrangell-St. Elias National Park and marvel at the dramatic Kenai Fjords. This is the best of Alaska, carefully curated to make the most of every moment.

- 7-day Voyage of the Glaciers cruise
- Two or more nights in the extraordinary Denali area, plus stays at the Kenai Peninsula and/or Wrangell-St. Elias National Park
- Princess® rail service
- Overnight stays at Princess wilderness lodges
- Sternwheeler Riverboat Cruise and Gold Dredge 8 Tour in Fairbanks (if applicable)
- Natural History Tour into Denali National Park (with an option to upgrade to the Tundra Wilderness Tour at an additional cost)



### LOOK FOR

the Direct-to-the-Wilderness® rail service symbol for itineraries featuring this exclusive service between our ships and our Denali-area lodges.



### ALSO LOOK FOR

the Princess Rail symbol for itineraries including this service. It features beautiful Alaska scenery, plus our warm Princess service.

Princess is pleased to offer prepaid meal packages for the land portion of your Alaska cruisetour. Call your travel advisor or Princess at 1.800.774.6237 to book.

## Off the Beaten Path



## TOUR LB5 LAND before CRUISE

DAY	DESTINATION
By Land	
1	<b>Fairbanks</b> – Alaska's "Golden Heart City" of Fairbanks is a great introduction to the heart of this unique state. Check in to your hotel and get ready for an adventure ahead. <b>Overnight at a Fairbanks hotel.</b>
2	<b>Fairbanks/Denali</b> – In the morning, take a cruise on an authentic Sternwheeler Riverboat down the Chena River before heading via motorcoach for Denali National Park and the Denali Princess Wilderness Lodge. Check in with the guest service desk for help in planning your own Denali adventure. Or you may enjoy the spectacular main lodge, river view deck, and Princess Village with the popular Christmas Cottage and Sugar Shack. <b>Overnight at Denali Princess Wilderness Lodge.*</b>
3	<b>Denali</b> – Explore Denali National Park on a Natural History Tour, watching for glimpses of Denali as well as Denali's Big Five: moose, caribou, bears, wolves and Dall sheep. Later in the evening, be sure to check out Fannie Q's Saloon, named after a famed local homesteader. <b>Overnight at Denali Princess Wilderness Lodge.*</b>
4	<b>Denali/Mt. McKinley</b> – The journey by Princess Rail to Talkeetna is unforgettable. Once you've arrived there, transfer by motorcoach to the Mt. McKinley Princess Wilderness Lodge. After getting settled in, have a glass of wine out on the deck or sit and gaze at the majesty of "The Great One" from the lodge's treehouse designed and built by Pete Nelson of Animal Planet's Treehouse Masters. <b>Overnight at Mt. McKinley Princess Wilderness Lodge.*</b>
5	<b>Mt. McKinley/Kenai</b> – Next you'll head by motorcoach across the stunning Kenai peninsula to Cooper Landing. Here the charming Kenai Princess Wilderness Lodge welcomes you to the classic Alaskan lodge retreat – timber log construction and all. Perhaps you'll explore Kenai Fjords National Park, spend the afternoon river rafting or go fishing. Later, return to your bungalow-style room with its wood-burning stove and sun porch for an evening of pure relaxation. <b>Overnight at Kenai Princess Wilderness Lodge.*</b>
6	<b>Kenai/Whittier/Embark Ship</b> – Relax in the morning before boarding a motorcoach to Whittier and your awaiting ship. Embark and sail in the evening.
By Sea	
7	<b>Southbound Voyage of the Glaciers Cruise</b>
8	<i>Cruising Hubbard Glacier</i>
9	<i>Cruising Glacier Bay National Park</i>
10	Skagway
11	Juneau
12	Ketchikan
13	<i>Cruising the Inside Passage</i>
	Vancouver, B.C., Canada

**OR** enjoy this cruisetour in reverse with your land tour after your cruise:

## TOUR LA5 LAND after CRUISE

- DAY 1** Vancouver, B.C., Canada
- DAY 2** *Cruising the Inside Passage*
- DAY 3** Ketchikan
- DAY 4** Juneau
- DAY 5** Skagway
- DAY 6** *Cruising Glacier Bay National Park*
- DAY 7** *Cruising College Fjord*
- DAY 8** Disembark Ship/Whittier/Kenai
- DAY 9** Kenai/Mt. McKinley
- DAY 10** Mt. McKinley/Denali
- DAY 11** Denali
- DAY 12** Denali/Fairbanks
- DAY 13** Fly home from Fairbanks

## 2022 DEPARTURES

TOUR LB5 LAND before CRUISE  
Fairbanks to Vancouver, B.C.Majestic Princess<sup>®</sup>

May 23	Jul 4, 18
Jun 6, 20	Aug 1, 15, 29

Royal Princess<sup>®</sup>

May 16, 30	Jul 11, 25	Sep 5
Jun 13, 27	Aug 8, 22	

	INTERIOR fares from*	\$2,399	Princess Plus fare includes* + drinks + wi-fi + crew incentive a value of <b>\$665</b>
	BALCONY fares from*	\$3,299	

TOUR LA5 LAND after CRUISE  
Vancouver, B.C. to FairbanksMajestic Princess<sup>®</sup>

May 7, 21	Jul 2, 16, 30
Jun 4, 18	Aug 13, 27

Royal Princess<sup>®</sup>

May 14, 28	Jul 9, 23	Sep 3
Jun 11, 25	Aug 6, 20	

Grand Princess<sup>®</sup>

May 11, 25	Jul 6, 20
Jun 8, 22	Aug 3, 17, 31

	INTERIOR fares from*	\$2,029	Princess Plus fare includes* + drinks + wi-fi + crew incentive a value of <b>\$665</b>
	BALCONY fares from*	\$2,829	

\*LA5 fares based on 5/11/22 departure on Grand Princess® LB5 fares based on 5/16/22 departure on Royal Princess®. Fares for other dates may vary. Taxes, Fees and Port Expenses of up to \$285 are additional and subject to change. See page 19 for more details.

\*Majestic Princess® and Royal Princess® voyages will sail on the west side of Vancouver Island.

\*Certain restrictions apply, please refer to page 87 for complete terms, conditions and definitions that apply to all bookings.

Princess® MedallionClass® experience is only available on the cruise portion of this cruisetour.



**TOUR MB6 LAND before CRUISE**

DAY	DESTINATION
By Land	
1	<b>Anchorage</b> – Explore the surprisingly metropolitan city of Anchorage by getting out to see the shops, restaurants and cultural attractions. <b>Overnight at Hotel Captain Cook.</b>
2	<b>Anchorage/Mt. McKinley</b> – Princess Rail takes you from Anchorage deep into the wilderness. Arriving at Talkeetna, you'll enjoy a scenic transfer to the Mt. McKinley Princess Wilderness Lodge*, a relaxing haven with incredible views. Sit and gaze at the majesty of "The Great One" from the lodge's treehouse or hear stories about climbing Denali in the Hudson Theater. <b>Overnight at Mt. McKinley Princess Wilderness Lodge.*</b>
3	<b>Mt. McKinley/Denali</b> – In the morning, enjoy a motorcoach journey to Denali Princess Wilderness Lodge*, just steps from Denali National Park. <b>Overnight at Denali Princess Wilderness Lodge.*</b>
4	<b>Denali</b> – Your full day at Denali Princess Wilderness Lodge* includes a Natural History Tour of the park as well as free time to plan your own excursion, such as a summit flight tour or rafting. <b>Overnight at Denali Princess Wilderness Lodge.*</b>
5	<b>Denali/Copper River</b> – Sightsee by motorcoach on the Denali Highway to Copper River Princess Wilderness Lodge*. <b>Overnight at Copper River Princess Wilderness Lodge.*</b>
6	<b>Copper River</b> – Enjoy a full day of leisure. Choose from many optional excursions that let you explore America's largest National Park – Wrangell-St. Elias. At day's end, pop into the Whistle Stop Bar & Grill for a burger and refreshing beverage. <b>Overnight at Copper River Princess Wilderness Lodge.*</b>
7	<b>Copper River/Valdez/Embark Ship</b> – Take a high-speed catamaran across Prince William Sound to Whittier. Board your ship.
By Sea	
	<b>Southbound Voyage of the Glaciers Cruise</b>
8	Cruising Hubbard Glacier
9	Cruising Glacier Bay National Park
10	Skagway
11	Juneau
12	Ketchikan
13	Cruising the Inside Passage
14	Vancouver, B.C., Canada

**OR** enjoy this cruisetour in reverse with your land tour after your cruise:

**TOUR MA6 LAND after CRUISE**

<b>DAY 1</b>	Vancouver, B.C., Canada
<b>DAY 2</b>	Cruising the Inside Passage
<b>DAY 3</b>	Ketchikan
<b>DAY 4</b>	Juneau
<b>DAY 5</b>	Skagway
<b>DAY 6</b>	Cruising Glacier Bay National Park
<b>DAY 7</b>	Cruising College Fjord
<b>DAY 8</b>	Disembark Ship/Whittier/Copper River
<b>DAY 9</b>	Copper River
<b>DAY 10</b>	Copper River/Denali
<b>DAY 11</b>	Denali
<b>DAY 12</b>	Denali/Mt. McKinley
<b>DAY 13</b>	Mt. McKinley/Anchorage
<b>DAY 14</b>	Fly home from Anchorage

**2022 DEPARTURES****TOUR MB6 LAND before CRUISE**  
*Anchorage to Vancouver, B.C.*Majestic Princess<sup>MA6</sup>

May 22	Jul 3, 17, 31
Jun 5, 19	Aug 14, 28

Royal Princess<sup>MA6</sup>

May 15, 29	Jul 10, 24	Sep 4
Jun 12, 26	Aug 7, 21	

Grand Princess<sup>MA6</sup>

May 26	Jul 7, 21	Sep 1
Jun 9, 23	Aug 4, 18	

**INTERIOR** fares from<sup>17</sup> **\$2,599****BALCONY** fares from<sup>17</sup> **\$3,499**

Princess Plus fare includes<sup>18</sup>  
+ drinks + wi-fi + crew incentive  
a value of **\$665**

**TOUR MA6 LAND after CRUISE**  
*Vancouver, B.C., to Anchorage*Majestic Princess<sup>MA6</sup>

May 21	Jul 2, 16, 30
Jun 4, 18	Aug 13, 27

Royal Princess<sup>MA6</sup>

May 14, 28	Jul 9, 23
Jun 11, 25	Aug 6, 20

**INTERIOR** fares from<sup>17</sup> **\$2,639****BALCONY** fares from<sup>17</sup> **\$3,439**

Princess Plus fare includes<sup>18</sup>  
+ drinks + wi-fi + crew incentive  
a value of **\$665**

<sup>17</sup>MA6 fares based on 5/14/22 departure on Royal Princess<sup>MA6</sup>. MB6 fares based on 5/15/22 departure on Royal Princess<sup>MA6</sup>. Fares for other dates may vary. Taxes, Fees and Port Expenses of up to \$295 are additional and subject to change. See page 19 for more details.

<sup>18</sup>Majestic Princess<sup>MA6</sup> and Royal Princess<sup>MA6</sup> voyages will sail on the west side of Vancouver Island.

<sup>19</sup>Certain restrictions apply, please refer to page 87 for complete terms, conditions and definitions that apply to all bookings.



Princess<sup>MA6</sup> MedallionClass<sup>MA6</sup> experience is only available on the cruise portion of this cruisetour.

## Off the Beaten Path



## TOUR NB7 LAND before CRUISE

DAY	DESTINATION
By Land	
1	Anchorage – Explore this surprisingly metropolitan city by getting out to see the shops, restaurants and attractions. Overnight at Hotel Captain Cook.
2	Anchorage/Copper River – Sightsee via the Glenn Highway to Copper River Princess Wilderness Lodge* Savor the views around the lodge. Overnight at Copper River Princess Wilderness Lodge*.
3	Copper River – Venture out into massive Wrangell-St. Elias National Park – the largest in the United States – or visit the tour desk for ideas. Overnight at Copper River Princess Wilderness Lodge*.
4	Copper River/Fairbanks – Take a scenic motorcoach ride to Fairbanks, known as Alaska's "Golden Heart City." Enjoy an evening of leisure. Overnight at a Fairbanks hotel.
5	Fairbanks – You'll be treated to an authentic Sternwheeler Riverboat Cruise on the Chena River and a tour at Gold Dredge 8 with a hearty miner's lunch. Then you have the rest of the day to further explore the town. Overnight at a Fairbanks hotel.
6	Fairbanks/Denali – Travel by motorcoach to Denali National Park and check in to Denali Princess Wilderness Lodge*, followed by a Natural History Tour. Overnight at Denali Princess Wilderness Lodge*.
7	Denali/Mt. McKinley – Enjoy a scenic motorcoach trip to the south side of the park and Mt. McKinley Princess Wilderness Lodge* Overnight at Mt. McKinley Princess Wilderness Lodge*.
8	Mt. McKinley/Whittier/Embark Ship – Our exclusive Direct-to-the-Wilderness* rail service takes you on a scenic rail journey through some of the best wilderness as you head toward Whittier, where your ship awaits.
By Sea	Southbound Voyage of the Glaciers Cruise
9	Cruising Hubbard Glacier
10	Cruising Glacier Bay National Park
11	Skagway
12	Juneau
13	Ketchikan
14	Cruising the Inside Passage
15	Vancouver, B.C., Canada

**OR** enjoy this cruisetour in reverse with your land tour after your cruise:

## TOUR NA7 LAND after CRUISE

- DAY 1 Vancouver, B.C., Canada
- DAY 2 Cruising the Inside Passage
- DAY 3 Ketchikan
- DAY 4 Juneau
- DAY 5 Skagway
- DAY 6 Cruising Glacier Bay National Park
- DAY 7 Cruising College Fjord
- DAY 8 Disembark Ship/Whittier/Mt. McKinley
- DAY 9 Mt. McKinley/Denali
- DAY 10 Denali/Fairbanks
- DAY 11 Fairbanks
- DAY 12 Fairbanks/Copper River
- DAY 13 Copper River
- DAY 14 Copper River/Anchorage
- DAY 15 Fly home from Anchorage

## 2022 DEPARTURES

## TOUR NB7 LAND before CRUISE

Anchorage to Vancouver, B.C.

Majestic Princess\*\*

May 21	Jul 2, 16, 30
Jun 4, 18	Aug 13, 27

Grand Princess\*

May 25	Jul 6, 20
Jun 8, 22	Aug 3, 17, 31

	INTERIOR fares from <sup>17</sup>	\$2,759	Princess Plus fare includes* + drinks + wi-fi + crew incentive a value of	\$665
	BALCONY fares from <sup>17</sup>	\$4,009		

## TOUR NA7 LAND after CRUISE

Vancouver, B.C. to Anchorage

Grand Princess\*

May 11, 25	Jul 6, 20
Jun 8, 22	Aug 3, 17

	INTERIOR fares from <sup>17</sup>	\$2,629	Princess Plus fare includes* + drinks + wi-fi + crew incentive a value of	\$665
	BALCONY fares from <sup>17</sup>	\$3,459		

\*NA7 fares based on 5/11/22 departure on Grand Princess\* NB7 fares based on 5/25/22 departure on Grand Princess\* Fares for other dates may vary. Taxes, Fees and Port Expenses of up to \$295 are additional and subject to change. See page 19 for more details.

\*\*Majestic Princess\* voyages will sail on the west side of Vancouver Island.

\*Certain restrictions apply, please refer to page 87 for complete terms, conditions and definitions that apply to all bookings.



Princess® MedallionClass® experience is only available on the cruise portion of this cruisetour.





### TOUR OB7 LAND before CRUISE

DAY	DESTINATION
By Land	
1	Fairbanks – Alaska's "Golden Heart City" of Fairbanks is a great introduction to the heart of this state. <b>Overnight at a Fairbanks hotel.</b>
2	Fairbanks – Enjoy a Gold Dredge 8 Tour, followed by a hearty miner's lunch and Sternwheeler Riverboat Cruise. You have the rest of the day to further explore the town. <b>Overnight at a Fairbanks hotel.</b>
3	Fairbanks/Denali – Set out for Denali National Park via a scenic rail journey and check in to Denali Princess Wilderness Lodge! Once there, enjoy the deck and vistas of the Nenana River Canyon. <b>Overnight at Denali Princess Wilderness Lodge.*</b>
4	Denali – A morning Natural History Tour into the park sets the day's tone. In the afternoon, plan your own activity. <b>Overnight at Denali Princess Wilderness Lodge.*</b>
5	Denali/Mt. McKinley – Travel by motorcoach to Mt. McKinley Princess Wilderness Lodge; set in the shadow of stunning Denali. <b>Overnight at McKinley Princess Wilderness Lodge.*</b>
6	Mt. McKinley/Kenai – A gorgeous motorcoach ride takes you across the Kenai Peninsula to Copper landing and the Kenai Princess Wilderness Lodge! <b>Overnight at Kenai Princess Wilderness Lodge.*</b>
7	Kenai – Explore Kenai Fjords National Park, and spend the afternoon rafting or fishing. <b>Overnight at Kenai Princess Wilderness Lodge.*</b>
8	Kenai/Whittier/Embark Ship – Arrive in Whittier via motorcoach, and embark and sail this evening.
By Sea	
	<b>Southbound Voyage of the Glaciers Cruise</b>
9	Cruising Hubbard Glacier
10	Cruising Glacier Bay National Park
11	Skagway
12	Juneau
13	Ketchikan
14	Cruising the Inside Passage
15	Vancouver, B.C., Canada

**OR** enjoy this cruisetour in reverse with your land tour after your cruise:

### TOUR OA7 LAND after CRUISE

- DAY 1** Vancouver, B.C., Canada
- DAY 2** Cruising the Inside Passage
- DAY 3** Ketchikan
- DAY 4** Juneau
- DAY 5** Skagway
- DAY 6** Cruising Glacier Bay National Park
- DAY 7** Cruising College Fjord
- DAY 8** Disembark Ship/Whittier/Kenai
- DAY 9** Kenai
- DAY 10** Kenai/Mt. McKinley
- DAY 11** Mt. McKinley/Denali
- DAY 12** Denali
- DAY 13** Denali/Fairbanks
- DAY 14** Fairbanks
- DAY 15** Fly home from Fairbanks

### 2022 DEPARTURES

#### TOUR OB7 LAND before CRUISE

Fairbanks to Vancouver, B.C.

Majestic Princess**			
May 21	Jun 4, 18	Jul 2, 16, 30	Aug 13, 27
Royal Princess*			
May 14, 28	Jul 9, 23	Sep 3	
Jun 11, 25	Aug 6, 20		
Grand Princess*			
May 11, 25	Jun 8, 22	Jul 6, 20	Aug 3, 17, 31



INTERIOR  
fares from<sup>†</sup>

**sold out**

Princess Plus fare includes\*  
+ drinks + wi-fi + crew incentive  
a value of **\$665**

#### TOUR OA7 LAND after CRUISE

Vancouver, B.C., to Fairbanks

Majestic Princess**			
May 7, 21	Jun 4, 18	Jul 2, 16, 30	Aug 13, 27
Royal Princess*			
May 14, 28	Jun 11, 25	Jul 9, 23	Aug 6, 20
Grand Princess*			
May 11, 25	Jun 8, 22	Jul 6, 20	Aug 3, 17, 31



INTERIOR  
fares from<sup>†</sup>

**\$2,499**

Princess Plus fare includes\*  
+ drinks + wi-fi + crew incentive  
a value of **\$665**

\*OA7 fares based on 5/11/22 departure on Grand Princess. Fares for other dates may vary. Taxes, Fees and Port Expenses of up to \$295 are additional and subject to change. See page 19 for more details.

\*\*Majestic Princess\* and Royal Princess\* voyages will sail on the west side of Vancouver Island.

\*Certain restrictions apply, please refer to page 87 for complete terms, conditions and definitions that apply to all bookings.

Guests will travel via the Alaska Railroad between Fairbanks and Denali.



Princess® MedallionClass® experience is only available on the cruise portion of this cruisetour.

# Off the Beaten Path



## TOUR PB8 LAND before CRUISE

DAY	DESTINATION
By Land	
1	<b>Fairbanks</b> – Alaska's "Golden Heart City" of Fairbanks is a great introduction to the heart of this state. <b>Overnight at a Fairbanks hotel.</b>
2	<b>Fairbanks</b> – Enjoy a Gold Dredge 8 Tour, followed by a hearty miner's lunch and Sternwheeler Riverboat Cruise. You have the rest of the day to further explore the town. <b>Overnight at a Fairbanks hotel.</b>
3	<b>Fairbanks/Denali</b> – Set out for Denali National Park via scenic rail and check in to Denali Princess Wilderness Lodge®. Once there, enjoy the deck and vistas of the Nenana River Canyon. <b>Overnight at Denali Princess Wilderness Lodge®.</b>
4	<b>Denali</b> – A morning Natural History Tour into the park sets the day's tone. In the afternoon, plan your own activity. <b>Overnight at Denali Princess Wilderness Lodge®.</b>
5	<b>Denali/Copper River</b> – Sightsee by motorcoach on the Denali Highway to Copper River Princess Wilderness Lodge®. <b>Overnight at Copper River Princess Wilderness Lodge®.</b>
6	<b>Copper River</b> – Venture out into massive Wrangell-St. Elias National Park – the largest in the United States, or visit the tour desk for ideas. <b>Overnight at Copper River Princess Wilderness Lodge®.</b>
7	<b>Copper River/Kenai</b> – Next, you'll head by motorcoach across the stunning Kenai Peninsula to Cooper Landing and Kenai Princess Wilderness Lodge®. <b>Overnight at Kenai Princess Wilderness Lodge®.</b>
8	<b>Kenai</b> – Explore Kenai Fjords National Park, and spend the afternoon rafting or fishing. <b>Overnight at Kenai Princess Wilderness Lodge®.</b>
9	<b>Kenai/Whittier/Embark Ship</b> – Arrive in Whittier via motorcoach, and embark and sail this evening.
By Sea	
10	<b>Southbound Voyage of the Glaciers Cruise</b> <i>Cruising Hubbard Glacier</i>
11	<i>Cruising Glacier Bay National Park</i>
12	<i>Skagway</i>
13	<i>Juneau</i>
14	<i>Ketchikan</i>
15	<i>Cruising the Inside Passage</i>
16	<i>Vancouver, B.C., Canada</i>

**OR** enjoy this cruisetour in reverse with your land tour after your cruise:

## TOUR PA8 LAND after CRUISE

- DAY 1** Vancouver, B.C., Canada
- DAY 2** *Cruising the Inside Passage*
- DAY 3** Ketchikan
- DAY 4** Juneau
- DAY 5** Skagway
- DAY 6** *Cruising Glacier Bay National Park*
- DAY 7** *Cruising College Fjord*
- DAY 8** *Disembark Ship/Whittier/Kenai*
- DAY 9** Kenai
- DAY 10** Kenai/Copper River
- DAY 11** Copper River
- DAY 12** Copper River/Denali
- DAY 13** Denali
- DAY 14** Denali/Fairbanks
- DAY 15** Fairbanks
- DAY 16** Fly home from Fairbanks

## 2022 DEPARTURES

### TOUR PB8 LAND before CRUISE

*Fairbanks to Vancouver, B.C.*

**Majestic Princess®**

May 20	Jul 1, 15, 29
Jun 3, 17	Aug 12, 26

**Grand Princess®**

May 24	Jul 5, 19
Jun 7, 21	Aug 2, 16, 30

	<b>INTERIOR</b> fares from <sup>17</sup>	<b>sold out</b>	Princess Plus fare includes* + drinks + wi-fi + crew incentive a value of <b>\$665</b>
	<b>BALCONY</b> fares from <sup>17</sup>	<b>sold out</b>	

### TOUR PA8 LAND after CRUISE

*Vancouver, B.C., to Fairbanks*

**Majestic Princess®**

May 21	Jul 2, 16, 30
Jun 4, 18	Aug 13, 27

	<b>INTERIOR</b> fares from <sup>17</sup>	<b>sold out</b>	Princess Plus fare includes* + drinks + wi-fi + crew incentive a value of <b>\$665</b>
	<b>BALCONY</b> fares from <sup>17</sup>	<b>sold out</b>	

Taxes, Fees and Port Expenses of up to \$290 are additional and subject to change. See page 19 for more details.

\*Certain restrictions apply, please refer to page 87 for complete terms, conditions and definitions that apply to all bookings.

†Majestic Princess® voyages will sail on the west side of Vancouver Island.

Guests will travel via the Alaska Railroad between Fairbanks and Denali.



Princess® MedallionClass® experience is only available on the cruise portion of this cruisetour.



# connoisseur

## cruisetours

cruisetours

connoisseur



Join a knowledgeable tour director into Alaska's most incredible sights, along with the highest level of service and fine cuisine. These cruisetours include five to 10 nights on land delving deep into Denali National Park, the Copper River and the Kenai Peninsula.

- 7-day Voyage of the Glaciers cruise
- Three or more nights in the Denali area
- Options to visit the incredible Kenai Peninsula and/or breathtaking Wrangell-St. Elias National Park
- Princess® rail service
- Most meals on land are included
- Overnight stays in our Princess wilderness lodges
- Expert tour director on land
- Tundra Wilderness Tour into Denali National Park
- Sternwheeler Riverboat Cruise and Gold Dredge 8 Tour in Fairbanks (if applicable)



### LOOK FOR

the Direct-to-the-Wilderness® rail service symbol for itineraries featuring this exclusive service between our ships and our Denali-area lodges.



### ALSO LOOK FOR

the Princess Rail symbol for itineraries including this service. It features beautiful Alaska scenery, plus our warm Princess service.



### TOUR QB5 LAND before CRUISE

DAY	DESTINATION
By Land	
1	<b>Anchorage</b> – Explore the surprisingly metropolitan city of Anchorage by getting out to see the shops, restaurants and cultural attractions. You'll meet your tour director in the evening. <b>Overnight at Hotel Captain Cook.</b>
2	<b>Anchorage/Mt. McKinley</b> – Journey by motorcoach from Anchorage to your first Princess lodge in the Denali area – Mt. McKinley Princess Wilderness Lodge.* Incredible views of the 20,310-foot mountain await you. <b>Overnight at Mt. McKinley Princess Wilderness Lodge.* (B,D)</b>
3	<b>Mt. McKinley</b> – You have a full day to spend however you choose. Visit the tour desk for ideas about excursions. Or explore the nature trails for sweeping vistas. <b>Overnight at Mt. McKinley Princess Wilderness Lodge.* (B,D)</b>
4	<b>Mt. McKinley/Denali</b> – Arrive by motorcoach at Denali Princess Wilderness Lodge* – set above the Nenana River Canyon – for a two-night stay. In the evening, you'll enjoy dinner at Fannie Q's Saloon. <b>Overnight at Denali Princess Wilderness Lodge.* (B,D)</b>
5	<b>Denali</b> – The morning begins with an in-depth Tundra Wilderness Tour highlighting many of the most intriguing natural facts about Denali National Park. <b>Overnight at Denali Princess Wilderness Lodge.* (B,L,D)</b>
6	<b>Denali/Whittier/Embark Ship</b> – Enjoy a scenic journey through some of Alaska's most beautiful landscape on the exclusive Direct-to-the-Wilderness* rail service toward Whittier, where your cruise ship awaits. (B,L)
By Sea	
7	<b>Southbound Voyage of the Glaciers Cruise</b> <i>Cruising Hubbard Glacier</i>
8	<i>Cruising Glacier Bay National Park</i>
9	<i>Skagway</i>
10	<i>Juneau</i>
11	<i>Ketchikan</i>
12	<i>Cruising the Inside Passage</i>
13	<i>Vancouver, B.C., Canada</i>

**OR** enjoy this cruisetour in reverse with your land tour after your cruise:

### TOUR QA5 LAND after CRUISE

- DAY 1** Vancouver, B.C., Canada
- DAY 2** Cruising the Inside Passage
- DAY 3** Ketchikan
- DAY 4** Juneau
- DAY 5** Skagway
- DAY 6** Cruising Glacier Bay National Park
- DAY 7** Cruising College Fjord
- DAY 8** Disembark Ship/Whittier/Denali
- DAY 9** Denali
- DAY 10** Denali/Mt. McKinley
- DAY 11** Mt. McKinley
- DAY 12** Mt. McKinley/Anchorage
- DAY 13** Fly home from Anchorage

### 2022 DEPARTURES

#### TOUR QB5 LAND before CRUISE Anchorage to Vancouver, B.C.

**Majestic Princess\***  
May 23 Jun 6, 20 Jul 4, 18 Aug 1, 15, 29

**Royal Princess\***  
May 16, 30 Jun 13, 27 Jul 11, 25 Aug 8, 22 Sep 5

**Grand Princess\***  
May 13, 27 Jun 10, 24 Jul 8, 22 Aug 5, 19 Sep 2

	<b>INTERIOR</b> fares from <sup>17</sup>	<b>\$2,769</b>	Princess Plus fare includes <sup>18</sup> + drinks + wi-fi + crew incentive a value of <b>\$665</b>
	<b>BALCONY</b> fares from <sup>17</sup>	<b>\$3,819</b>	

#### TOUR QA5 LAND after CRUISE Vancouver, B.C., to Anchorage

**Majestic Princess\***  
May 7, 21 Jun 4, 18 Jul 2, 16, 30 Aug 13, 27

**Royal Princess\***  
May 14, 28 Jun 11, 25 Jul 9, 23 Aug 6, 20

**Grand Princess\***  
May 11, 25 Jun 8, 22 Jul 6, 20 Aug 3, 17, 31

	<b>INTERIOR</b> fares from <sup>17</sup>	<b>\$2,719</b>	Princess Plus fare includes <sup>18</sup> + drinks + wi-fi + crew incentive a value of <b>\$665</b>
	<b>BALCONY</b> fares from <sup>17</sup>	<b>\$3,519</b>	

\*QA5 fares based on 5/11/22 departure on Grand Princess; QB5 fares based on 5/13/22 departure on Grand Princess. Fares for other dates may vary. Taxes, Fees and Port Expenses of up to \$295 are additional and subject to change. See page 19 for more details.

<sup>17</sup>Majestic Princess\* and Royal Princess\* voyages will sail on the west side of Vancouver Island.

<sup>18</sup>Certain restrictions apply, please refer to page 87 for complete terms, conditions and definitions that apply to all bookings.

B = Breakfast L = Lunch D = Dinner

Princess® MedallionClass® experience is only available on the cruise portion of this cruisetour.



**TOUR RB6** LAND before CRUISE

DAY	DESTINATION
By Land	
1	<b>Anchorage</b> – Explore the surprisingly metropolitan city of Anchorage by getting out to see the shops, restaurants and cultural attractions. You'll meet your tour director in the evening. <b>Overnight at Hotel Captain Cook.</b>
2	<b>Anchorage/Mt. McKinley</b> – Princess Rail takes you from Anchorage deep into the wilderness. Enjoy the scenic transfer from Talkeetna to the Mt. McKinley Princess Wilderness Lodge,* featuring incredible views of Denali. Sit and gaze at "The Great One" from the lodge's treehouse and hear stories about climbing Denali in the Hudson Theater. <b>Overnight at Mt. McKinley Princess Wilderness Lodge.*</b> (B,D)
3	<b>Mt. McKinley/Denali</b> – Enjoy a scenic motorcoach journey to Denali Princess Wilderness Lodge; just steps from Denali National Park. In the evening, you'll enjoy dinner in our newest venue, Fannie Q's Saloon. <b>Overnight at Denali Princess Wilderness Lodge.*</b> (B,D)
4	<b>Denali</b> – The morning begins with a Tundra Wilderness Tour highlighting intriguing natural facts about Denali National Park. <b>Overnight at Denali Princess Wilderness Lodge.*</b> (B,L,D)
5	<b>Denali/Copper River</b> – Sightsee by motorcoach on the Denali Highway to Copper River Princess Wilderness Lodge.* <b>Overnight at Copper River Princess Wilderness Lodge.*</b> (B,D)
6	<b>Copper River</b> – Attractions near Copper River Princess Wilderness Lodge* include massive Wrangell-St. Elias National Park. <b>Overnight at Copper River Princess Wilderness Lodge.*</b> (B,D)
7	<b>Copper River/Whittier/Embark Ship</b> – Set out by motorcoach for the journey to Valdez, and then enjoy a scenic catamaran ride across Prince William Sound to Whittier, where your cruise ship awaits. (B)
By Sea	<b>Southbound Voyage of the Glaciers Cruise</b>
8	<i>Cruising Hubbard Glacier</i>
9	<i>Cruising Glacier Bay National Park</i>
10	Skagway
11	Juneau
12	Ketchikan
13	<i>Cruising the Inside Passage</i>
14	Vancouver, B.C., Canada

**OR** enjoy this cruisetour in reverse with your land tour after your cruise:

**TOUR RA6** LAND after CRUISE

- DAY 1** Vancouver, B.C., Canada  
**DAY 2** Cruising the Inside Passage  
**DAY 3** Ketchikan  
**DAY 4** Juneau  
**DAY 5** Skagway  
**DAY 6** Cruising Glacier Bay National Park  
**DAY 7** Cruising College Fjord  
**DAY 8** Disembark Ship/Whittier/Copper River  
**DAY 9** Copper River  
**DAY 10** Copper River/Denali  
**DAY 11** Denali  
**DAY 12** Denali/Mt. McKinley  
**DAY 13** Mt. McKinley/Anchorage  
**DAY 14** Fly home from Anchorage

**2022 DEPARTURES****TOUR RB6** LAND before CRUISE  
*Anchorage to Vancouver, B.C.*

Grand Princess®

May 26	Jul 7, 21	Sep 1
Jun 9, 23	Aug 4, 18	

	<b>INTERIOR</b> fares from <sup>17</sup>	<b>sold out</b>	Princess Plus fare includes <sup>18</sup> + drinks + wi-fi + crew incentive a value of <b>\$665</b>
	<b>BALCONY</b> fares from <sup>17</sup>	<b>sold out</b>	

**TOUR RA6** LAND after CRUISE  
*Vancouver, B.C., to Anchorage*Majestic Princess®<sup>19</sup>

May 21	Jul 2, 16, 30
Jun 4, 18	Aug 13, 27

	<b>INTERIOR</b> fares from <sup>17</sup>	<b>\$3,169</b>	Princess Plus fare includes <sup>18</sup> + drinks + wi-fi + crew incentive a value of <b>\$665</b>
	<b>BALCONY</b> fares from <sup>17</sup>	<b>\$4,019</b>	

<sup>17</sup>RA6 fares based on 5/21/22 departure on Majestic Princess.\* Fares for other dates may vary. Taxes, Fees and Port Expenses of up to \$290 are additional and subject to change. See page 19 for more details.

<sup>18</sup>Majestic Princess® voyages will sail on the west side of Vancouver Island.

<sup>19</sup>Certain restrictions apply, please refer to page 87 for complete terms, conditions and definitions that apply to all bookings.

B = Breakfast L = Lunch D = Dinner

Princess® MedallionClass® experience is only available on the cruise portion of this cruisetour.



### TOUR SB6 LAND before CRUISE

DAY	DESTINATION
By Land	
1	<b>Fairbanks</b> – Alaska's "Golden Heart City" of Fairbanks is a great introduction to the heart of this unique state. You'll meet your tour director in the evening. <b>Overnight at Fairbanks Princess Riverside Lodge*</b>
2	<b>Fairbanks</b> – Enjoy a Gold Dredge 8 Tour in the morning and then a Sternwheeler Riverboat Cruise in the afternoon, with a hearty miner's lunch included. You have the rest of the day to further explore the town. <b>Overnight at Fairbanks Princess Riverside Lodge*</b> (B,L,D)
3	<b>Fairbanks/Denali</b> – Arrive by motorcoach at Denali Princess Wilderness Lodge* – set above the Nenana River Canyon – for a two-night stay. <b>Overnight at Denali Princess Wilderness Lodge*</b> (B,D)
4	<b>Denali</b> – The morning begins with an in-depth Tundra Wilderness Tour highlighting many of the most intriguing natural facts about Denali National Park. In the evening, you'll enjoy dinner in our newest venue, Fannie Q's Saloon. <b>Overnight at Denali Princess Wilderness Lodge*</b> (B,L,D)
5	<b>Denali/Mt. McKinley</b> – In the morning, travel by Princess Rail service to Denali State Park for two nights at the Mt. McKinley Princess Wilderness Lodge*. Take in the sensational views of Denali and the Alaska Range with a glass of wine in the Great Room or on the expansive deck. The North Fork Restaurant is the perfect place for a relaxed dinner to end your day. <b>Overnight at Mt. McKinley Princess Wilderness Lodge*</b> (B,D)
6	<b>Mt. McKinley</b> – You have a full day to spend however you choose. Visit the tour desk for ideas about excursions. Or explore the nature trails for sweeping vistas. <b>Overnight at Mt. McKinley Princess Wilderness Lodge*</b> (B,D)
7	<b>Mt. McKinley/Whittier/Embark Ship</b> – Motorcoach to Whittier where your cruise ship awaits. (B,L)
By Sea	<b>Southbound Voyage of the Glaciers Cruise</b>
8	<i>Cruising Hubbard Glacier</i>
9	<i>Cruising Glacier Bay National Park</i>
10	Skagway
11	Juneau
12	Ketchikan
13	<i>Cruising the Inside Passage</i>
14	Vancouver, B.C., Canada

**OR** enjoy this cruisetour in reverse with your land tour after your cruise:

### TOUR SA6 LAND after CRUISE

- DAY 1** Vancouver, B.C., Canada
- DAY 2** *Cruising the Inside Passage*
- DAY 3** Ketchikan
- DAY 4** Juneau
- DAY 5** Skagway
- DAY 6** *Cruising Glacier Bay National Park*
- DAY 7** *Cruising College Fjord*
- DAY 8** Disembark Ship/Whittier/Mt. McKinley
- DAY 9** Mt. McKinley
- DAY 10** Mt. McKinley/Denali
- DAY 11** Denali
- DAY 12** Denali/Fairbanks
- DAY 13** Fairbanks
- DAY 14** Fly home from Fairbanks

### 2022 DEPARTURES

#### TOUR SB6 LAND before CRUISE Fairbanks to Vancouver, B.C.

<b>Majestic Princess**</b>	May 22	Jul 3, 17, 31
	Jun 5, 19	Aug 14, 28

<b>Royal Princess*</b>	May 15, 29	Jul 10, 24	Sep 4
	Jun 12, 26	Aug 7, 21	

<b>Grand Princess*</b>	May 12, 26	Jul 7, 21	Sep 1
	Jun 9, 23	Aug 4, 18	

	<b>INTERIOR</b> fares from <sup>17</sup>	<b>\$2,999</b>	Princess Plus fare includes <sup>18</sup>
	<b>BALCONY</b> fares from <sup>17</sup>	<b>\$4,049</b>	+ drinks + wi-fi + crew incentive a value of <b>\$665</b>

#### TOUR SA6 LAND after CRUISE Vancouver, B.C., to Fairbanks

<b>Grand Princess*</b>	May 11, 25	Jul 6, 20
	Jun 8, 22	Aug 3, 17, 31

	<b>INTERIOR</b> fares from <sup>17</sup>	<b>\$3,309</b>	Princess Plus fare includes <sup>18</sup>
	<b>BALCONY</b> fares from <sup>17</sup>	<b>\$4,109</b>	+ drinks + wi-fi + crew incentive a value of <b>\$665</b>

<sup>17</sup>SA6 fares based on 5/11/22 departure on Grand Princess; SB6 fares based on 5/12/22 departure on Grand Princess; Fares for other dates may vary. Taxes, Fees and Port Expenses of up to \$295 are additional and subject to change. See page 19 for more details.

<sup>18</sup>Majestic Princess\* and Royal Princess\* voyages will sail on the west side of Vancouver Island.

<sup>19</sup>Certain restrictions apply, please refer to page 87 for complete terms, conditions and definitions that apply to all bookings.

B = Breakfast L = Lunch D = Dinner

Princess® MedallionClass® experience is only available on the cruise portion of this cruisetour.



**TOUR TB8** LAND before CRUISE

DAY	DESTINATION
By Land	
1	Fairbanks – Settle into your hotel, explore the town and get ready for the adventure ahead. Meet your tour director this evening. <b>Overnight at Fairbanks Princess Riverside Lodge*</b>
2	Fairbanks – Enjoy a Gold Dredge 8 Tour in the morning and then a Sternwheeler Riverboat Cruise in the afternoon with a hearty miner's lunch included. <b>Overnight at Fairbanks Princess Riverside Lodge*</b> (B,L,D)
3	Fairbanks/Denali – The journey by comfortable motorcoach to Denali Princess Wilderness Lodge* is spectacular. <b>Overnight at Denali Princess Wilderness Lodge*</b> (B,D)
4	Denali – Explore Denali National Park on a Tundra Wilderness Tour, watching for glimpses of Denali as well as Denali's Big Five: bears, moose, caribou, wolves and Dall sheep. This evening enjoy dinner at Fannie Q's Saloon, named after a famed local homesteader. <b>Overnight at Denali Princess Wilderness Lodge*</b> (B,L,D)
5	Denali/Mt. McKinley – The journey by Princess Rail to Talkeetna is unforgettable. Settle in your lodge and enjoy the views. <b>Overnight at Mt. McKinley Princess Wilderness Lodge*</b> (L,D)
6	Mt. McKinley/Kenai – Head by motorcoach across the stunning Kenai Peninsula to Cooper Landing. <b>Overnight at Kenai Princess Wilderness Lodge*</b> (B,D)
7	Kenai – Explore Kenai Fjords National Park; spend the afternoon river rafting or go fishing. <b>Overnight at Kenai Princess Wilderness Lodge*</b> (B,D)
8	Kenai – You have a full day to spend however you choose. <b>Overnight at Kenai Princess Wilderness Lodge*</b> (B,D)
9	Kenai/Whittier/Embark Ship – Set out by motorcoach for the journey to Whittier, where your cruise ship awaits. (B)
By Sea	
10	<b>Southbound Voyage of the Glaciers Cruise</b> Cruising Hubbard Glacier
11	Cruising Glacier Bay National Park
12	Skagway
13	Juneau
14	Ketchikan
15	Cruising the Inside Passage
16	Vancouver, B.C., Canada



## 2022 DEPARTURES

**TOUR TB8 LAND before CRUISE**  
*Fairbanks to Vancouver, B.C.**Majestic Princess\**<sup>†</sup>

May 20	Jul 1, 15, 29
Jun 3, 17	Aug 12, 26

*Royal Princess\**<sup>†</sup>

May 13, 27	Jul 8, 22	Sep 2
Jun 10, 24	Aug 5, 19	

	INTERIOR fares from <sup>17</sup>	<b>sold out</b>	Princess Plus fare includes* + drinks + wi-fi + crew incentive a value of <b>\$665</b>
	BALCONY fares from <sup>17</sup>	<b>sold out</b>	

Taxes, Fees and Port Expenses of up to \$310 are additional and subject to change. See page 19 for more details.

<sup>†</sup>Majestic Princess\* and Royal Princess\* voyages will sail on the west side of Vancouver Island.

<sup>‡</sup>Certain restrictions apply, please refer to page 87 for complete terms, conditions and definitions that apply to all bookings.

B = Breakfast L = Lunch D = Dinner

Princess® MedallionClass® experience is only available on the cruise portion of this cruisetour.





# the ultimate Princess® cruisetour experience

7 DAYS AT SEA, 10 DAYS ON LAND & 5 WILDERNESS LODGES

Get the most out of your journey by exploring five of Alaska's most astonishing parks in one epic cruisetour. Stay at all five Princess® wilderness lodges that are perfectly positioned near national parks, providing your perfect home away from home. Two nights in each lodge give ample time to immerse yourself in Alaska's beauty as you set out on guided excursions and spend your downtime relaxing in pristine settings.



7

Days  
at Sea



10

Days  
on Land



5

Lodges



Countless  
Memories



**TOUR UB1** LAND before CRUISE

DAY	DESTINATION
By Land	
1	Fairbanks – Alaska's "Golden Heart City" is a great introduction to the heart of this unique state. Meet your tour director this evening. <b>Overnight at Fairbanks Princess Riverside Lodge*.</b>
2	Fairbanks – Take a Gold Dredge 8 Tour and cruise on a Sternwheeler Riverboat down the Chena River with a miner's lunch included. <b>Overnight at Fairbanks Princess Riverside Lodge* (B,L,D)</b>
3	Fairbanks/Denali – Set out for Denali National Park via motorcoach. In the evening, you'll enjoy dinner at Fannie Q's Saloon. <b>Overnight at Denali Princess Wilderness Lodge* (B,D)</b>
4	Denali – Enjoy breakfast before exploring Denali National Park on a Tundra Wilderness Tour. <b>Overnight at Denali Princess Wilderness Lodge* (B,L,D)</b>
5	Denali/Mt. McKinley – After your journey by rail, settle at your lodge. <b>Overnight at Mt. McKinley Princess Wilderness Lodge* (L,D)</b>
6	Mt. McKinley – You have a full day to spend however you choose. <b>Overnight at Mt. McKinley Princess Wilderness Lodge* (B,D)</b>
7	Mt. McKinley/Kenai – Head by motorcoach across Kenai Peninsula to Cooper Landing. <b>Overnight at Kenai Princess Wilderness Lodge* (B,D)</b>
8	Kenai – Explore Kenai Fjords National Park. <b>Overnight at Kenai Princess Wilderness Lodge* (B,D)</b>
9	Kenai/Copper River – Travel by motorcoach to Copper River. <b>Overnight at Copper River Princess Wilderness Lodge* (B,D)</b>
10	Copper River – Venture out into Wrangell-St. Elias National Park – the largest in the United States – or visit the tour desk for ideas. <b>Overnight at Copper River Princess Wilderness Lodge* (B,D)</b>
11	Copper River/Valdez/Embark Ship – Enjoy a catamaran ride across Prince William Sound to Whittier, where your cruise ship awaits. (B)
By Sea	
	<b>Southbound Voyage of the Glaciers Cruise</b>
12	Cruising Hubbard Glacier
13	Cruising Glacier Bay National Park
14	Skagway
15	Juneau
16	Ketchikan
17	Cruising the Inside Passage
18	Vancouver, B.C., Canada

**OR** enjoy this cruisetour in reverse with your land tour after your cruise:

**TOUR UA1** LAND after CRUISE

- DAY 1** Vancouver, B.C., Canada  
**DAY 2** Cruising the Inside Passage  
**DAY 3** Ketchikan  
**DAY 4** Juneau  
**DAY 5** Skagway  
**DAY 6** Cruising Glacier Bay National Park  
**DAY 7** Cruising College Fjord  
**DAY 8** Disembark Ship/Whittier/Copper River  
**DAY 9** Copper River  
**DAY 10** Copper River/Kenai  
**DAY 11** Kenai  
**DAY 12** Kenai/Mt. McKinley  
**DAY 13** Mt. McKinley  
**DAY 14** Mt. McKinley/Denali  
**DAY 15** Denali  
**DAY 16** Denali/Fairbanks  
**DAY 17** Fairbanks  
**DAY 18** Fly home from Fairbanks

**2022 DEPARTURES****TOUR UB1** LAND before CRUISE

Fairbanks to Vancouver, B.C.

Majestic Princess®<sup>22</sup>

May 18 Jun 1, 15, 29 Jul 13, 27 Aug 10, 24

Royal Princess®

May 11, 25 Jun 8, 22 Jul 6, 20 Aug 3, 17, 31

	INTERIOR fares from <sup>17</sup>	<b>sold out</b>	Princess Plus fare includes* + drinks + wi-fi + crew incentive a value of <b>\$665</b>
	BALCONY fares from <sup>17</sup>	<b>sold out</b>	

**TOUR UA1** LAND after CRUISE

Vancouver, B.C., to Fairbanks

Majestic Princess®<sup>22</sup>

May 21 Jun 4, 18 Jul 2, 16, 30 Aug 13, 27

Royal Princess®

May 14, 28 Jun 11, 25 Jul 9, 23 Aug 6, 20

Grand Princess®

May 25 Jun 8, 22 Jul 6, 20 Aug 3, 17

	INTERIOR fares from <sup>17</sup>	<b>\$4,739</b>	Princess Plus fare includes* + drinks + wi-fi + crew incentive a value of <b>\$665</b>
	BALCONY fares from <sup>17</sup>	<b>\$5,539</b>	

<sup>17</sup>UA1 fares based on 5/14/22 departure on Royal Princess®. Fares for other dates may vary. Taxes, Fees and Port Expenses of up to \$310 are additional and subject to change. See page 19 for more details.

<sup>22</sup>Majestic Princess® and Royal Princess® voyages will sail on the west side of Vancouver Island.

<sup>23</sup>Certain restrictions apply, please refer to page 87 for complete terms, conditions and definitions that apply to all bookings.

B = Breakfast L = Lunch D = Dinner



Princess® MedallionClass® experience is only available on the cruise portion of this cruisetour.



## Heart of the Rockies Plus Rail



## TOUR 1A LAND before CRUISE

DAY	DESTINATION
By Land	
1	<b>Calgary</b> – Arrive in Calgary and enjoy a welcome reception hosted by your Tour Director. <b>Overnight at Fairmont Palliser Hotel.</b>
2	<b>Calgary/Banff</b> – Drive west to the mountain resort of Banff. Enjoy a sightseeing tour that highlights Bow Falls, the Hoodoo Lookout, Lake Minnewanka and Surprise Corner. <b>Overnight at Fairmont Banff Springs Hotel.</b> (B,D)
3	<b>Banff</b> – Enjoy the day exploring Banff. <b>Overnight at Fairmont Banff Springs Hotel.</b> (B,D)
4	<b>Banff/Lake Louise</b> – En route to Lake Louise, your tour will take you to Moraine Lake, located in the Valley of the Ten Peaks. <b>Overnight at Fairmont Chateau Lake Louise.</b> (B,D)
5	<b>Lake Louise/Jasper</b> – Highway 93, known as the Icefields Parkway, is one of the most scenic drives in the world. Stop at the Columbia Icefield and shuttle to the Athabasca Glacier for a guided tour onto the surface of the glacier. <b>Overnight at Fairmont Jasper Park Lodge.</b> (B,L,D)
6	<b>Jasper/Kamloops</b> – Board the Rocky Mountaineer train. Your SilverLeaf rail adventure takes you from Jasper to Kamloops. <b>Overnight at a Kamloops Hotel.</b> (B,L)
7	<b>Kamloops/Vancouver</b> – Travel through the Fraser Delta en route to Vancouver. Breakfast, lunch and snacks are included while aboard the Rocky Mountaineer. Transfer from the train station to your hotel and enjoy a farewell dinner with your Tour Director. <b>Overnight at a Vancouver Hotel.</b> (B,L,D)
8	<b>Vancouver/Embark Ship</b> – Transfer to your Princess ship.
By Sea	
	<b>Northbound Voyage of the Glaciers Cruise</b>
9	<i>Cruising the Inside Passage</i>
10	Ketchikan
11	Juneau
12	Skagway
13	<i>Cruising Glacier Bay National Park</i>
14	<i>Cruising College Fjord</i>
15	Anchorage (Whittier)



## 2022 DEPARTURES

TOUR 1A LAND before CRUISE  
Calgary to Anchorage

<b>Majestic Princess®</b>	Apr 30	Jun 11, 25	Aug 6, 20
	May 14, 28	Jul 9, 23	

<b>Royal Princess®</b>	May 7, 21	Jul 2, 16, 30
	Jun 4, 18	Aug 13, 27

	<b>INTERIOR</b> fares from <sup>1†</sup>	<b>\$6,199</b>	Princess Plus fare includes <sup>‡</sup> + drinks + wi-fi + crew incentive a value of <b>\$665</b>
	<b>BALCONY</b> fares from <sup>1†</sup>	<b>\$6,849</b>	

<sup>†</sup>1A fares based on 5/7/22 departure on Royal Princess. Fares for other dates may vary. Taxes, Fees and Port Expenses of up to \$490 are additional and subject to change. See page 19 for more details.

<sup>‡</sup>Majestic Princess® and Royal Princess® voyages will sail on the west side of Vancouver Island.

<sup>‡</sup>Certain restrictions apply, please refer to page 87 for complete terms, conditions and definitions that apply to all bookings.

B = Breakfast L = Lunch D = Dinner

Princess® MedallionClass® experience is only available on the cruise portion of this cruisetour.





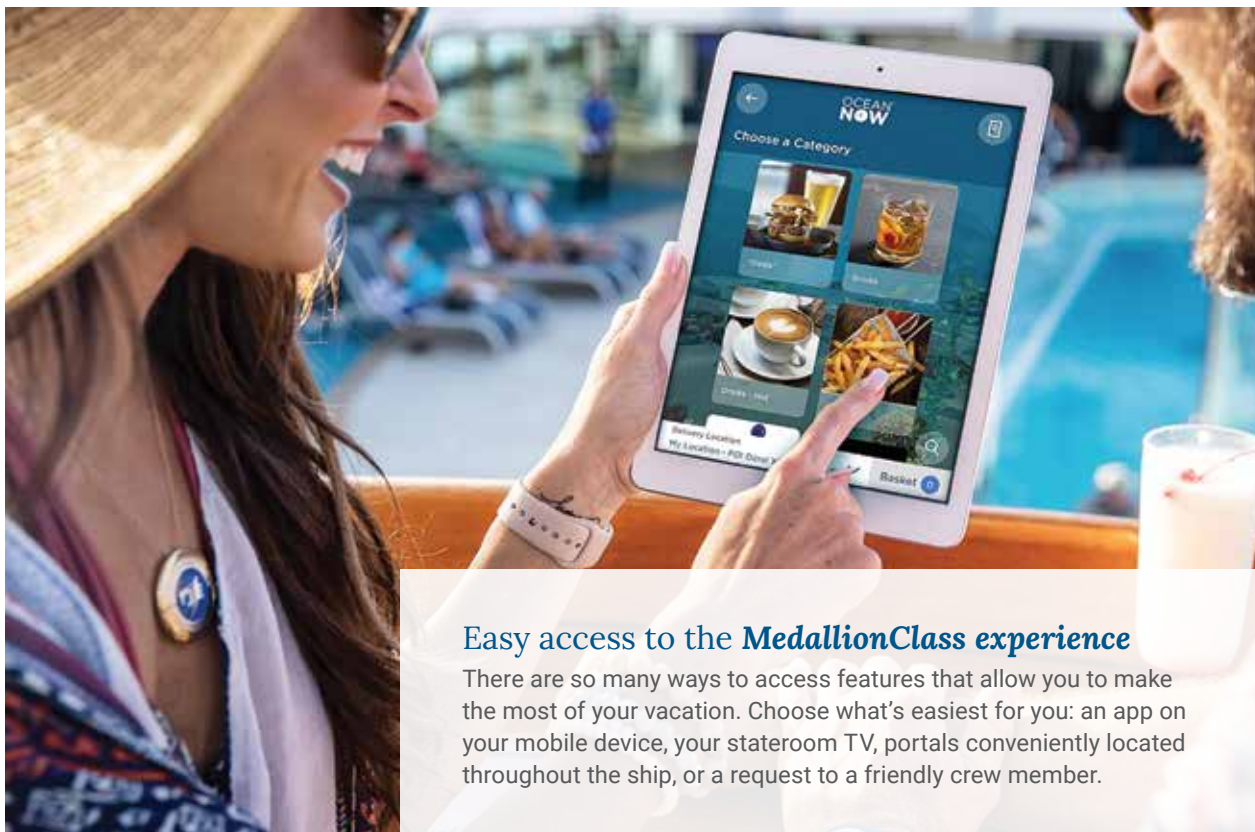
# your vacation — simplified. personalized.

Princess MedallionClass® vacations put you in control. Decide who you interact with and how. Choose exactly when and where you eat, or have food, drinks and other items delivered wherever you are. This personalized service makes everything easier so you can connect with what matters most to you.



## It starts with your Medallion® wearable

Free to all guests, this quarter-sized device never needs to be turned on or off. Wear it wherever you go, and see how easy your vacation can be. Your stateroom door unlocks as you approach, your food and drinks find you, and friends and family can easily locate you.



## Easy access to the *MedallionClass experience*

There are so many ways to access features that allow you to make the most of your vacation. Choose what's easiest for you: an app on your mobile device, your stateroom TV, portals conveniently located throughout the ship, or a request to a friendly crew member.

## Streamline your arrival experience

Completing the OceanReady® steps before you sail means enjoying your vacation sooner. Not only do you receive your Medallion® wearable at home, you also choose your arrival time to expedite check-in. And for the ultimate customized experience, update your profile, and share your preferences.



## Simplified safety briefing

We've streamlined the traditional safety drill to make it more convenient and crowd-free. On embarkation day, watch the required safety video anytime, anywhere on board, whether on your MedallionClass app or stateroom TV. Check in with a crew member at your muster station before your ship sails so you'll know exactly where to go in case of an emergency.

## Easy stateroom entry

No need to pull out a key card. Your stateroom door unlocks as soon as you approach.



## The best Wi-Fi at sea<sup>53</sup>

Stay connected while you unwind with MedallionNet® Wi-Fi. Stream your favorite shows by the pool. Post a picture of a stunning sunset to social media. Or, if you must check your email or log on to work, it's effortless with this fast, reliable service.

## Find your way — and your shipmates

Get directions that guide you where you want to go, step by step. Chat with family and friends through the app. Need to find your travel party? Locate them anywhere on board using your smart device or portals around the ship (no internet plan needed).



Learn more by visiting [princess.com/medallionclass](https://princess.com/medallionclass)

<sup>53</sup>Please note that depending on where our ships are sailing, you may encounter unavoidable service interruptions due to obstructions caused by geographical features. Also, in Southern latitudes such as the Caribbean or the Mediterranean, internet speeds are often faster than those in Northern latitudes, such as Alaska or the Baltics.





## Customize dining with **Dine My Way<sup>SM</sup>** reservations

Enjoy complete flexibility when it comes to your meals. You can now make reservations for the main dining room or specialty restaurants at your preferred time and pace.

NOTE: Reservation times are based on venue capacity and availability.



## **MedallionPay<sup>TM</sup>** payment – effortless, contactless

MedallionPay<sup>TM</sup> touch-free payment eliminates the need for you to hand over, tap, swipe or insert a card, provide a signature or enter a pin.

## Whatever you need, **delivered**

Want hot chocolate on your balcony? A robe for your stateroom? Pizza as you watch Movies Under the Stars<sup>®</sup>? Use OceanNow<sup>®</sup> ordering to request whatever you need, wherever you are.

## **Reserve activities & view venue attendance**

Have the event calendar for your entire voyage at your fingertips. JourneyView<sup>®</sup> digital planner lets you customize your own itinerary.



## **Games for all ages at your fingertips**

Wager real money on all your favorite casino games in Ocean<sup>®</sup> Casino, anywhere on board. And with the new Sportsbook Ocean you can bet on major competitions, such as professional<sup>®</sup> and college football, basketball, hockey and other major events in real time — a first at sea! Access Ocean Casino on the MedallionClass app, and play slots, poker, roulette, bingo and much more on your smart device when and wherever you like. (You can even play blackjack on your stateroom TV!) Plus, PlayOcean<sup>®</sup> games are fun for the whole family with activities like a location-based scavenger hunt.



# personalize your experience

Customize and choose how to wear your Medallion® device, whether on a necklace, sports band or clip — plus new sustainable options. View and reserve activities of interest — live music, games, stargazing, dance classes and more — creating your own schedule. Tell us what you're allergic to, dining pace preferences, accessibility needs, any special occasion you're celebrating — even how you like your coffee! — and we'll customize your experience.



<sup>97</sup>Available for United States only.

<sup>98</sup>Certain games and/or teams may be excluded from sports betting.

# sip and savor as you sail

Dining on board is designed to complement your Alaska adventure with fresh flavors and a taste of regionally sourced ingredients. Crafted by our innovative and award-winning chefs, our casual bites, local favorites and delectable specialty dining fare are sure to satisfy all discerning tastes.



## Expand Your Palate with **Specialty Dining**

An unparalleled dining experience awaits you at our onboard specialty dining restaurants. Taste handmade pasta made fresh daily and sip regional wines at Sabatini's<sup>SM</sup> Italian Trattoria. Crown Grill<sup>SM</sup> serves up steaks, chops and seafood, cooked to perfection. Dine at Chef's Table for an incredible culinary journey and a behind-the-scenes tour.



## **Inspiration from the Sea**

Salmon and king crab thrive beneath the surface of Alaska's chilly waters. At our lodges and on board, our chefs prepare seafood with recipes using regional ingredients and inspired by local traditions so you savor every last bite. From flavorful seafood to hearty main course options, you'll taste the influence of Alaska's great land and sea.







## OceanNow® Ordering

Glacier viewing doesn't have to be interrupted when you want a drink. With OceanNow, place your order and crew will bring it to you, wherever you are, so you can stay in the moment. Even better, delivery is free!

## Comfort Foods

Treat yourself to tasty snacks and sweet indulgences on board as you sail Alaska's Inside Passage. Grab a slice of our Neapolitan-style pizza, named "Best Pizza at Sea" by *USA TODAY*,<sup>95</sup> or delight in pastries, coffee, salads and sandwiches at the 24-hour International Café. Enjoy the convenience of round-the-clock complimentary room service whether you're craving a full meal, a satisfying snack or made-from-scratch dessert.



## Say Cheers

End a day of viewing glaciers with a handcrafted cocktail designed by renowned mixologist Rob Floyd. For even more options enjoy our Premier Beverage Package at a great value.



<sup>58</sup>Food & Wine Magazine, Best Cruises for Food Lovers, 2014

<sup>59</sup>Wine Spectator, Award of Excellence, Wine List, 2019

<sup>95</sup>USA Today, Best Pizza at Sea - Alfredo's, 2015, 2013

Charges may apply for select menu items. For those traveling with children, high chairs and booster seats are available in the dining room, and our staff will provide pureed foods when requested. A kids menu and activity mat with crayons are available. Locations, features and venues may vary by ship, and actual meal times and charges are subject to change.



# world-class entertainment

As your ship glides to new shores, your adventures are only beginning. Onboard entertainment will captivate you, from Broadway-style productions to poolside movies under a canopy of stars. Just see what we have in store for you.

## Curtain Up!

Rousing entertainment entices you from every corner of a Princess® ship. Our classic light opera shows are woven seamlessly with contemporary hits as ballroom dancing and the swells of orchestral music take center stage with *Bravo* and *Encore*.



## THE VOICE OF THE OCEAN

If you're a fan of singing competitions, you'll love competing in the *Voice of the Ocean* or watching the thrilling live finale in the theater. At first glance, the iconic spinning chairs will signal the excitement of the wildly popular musical competition.





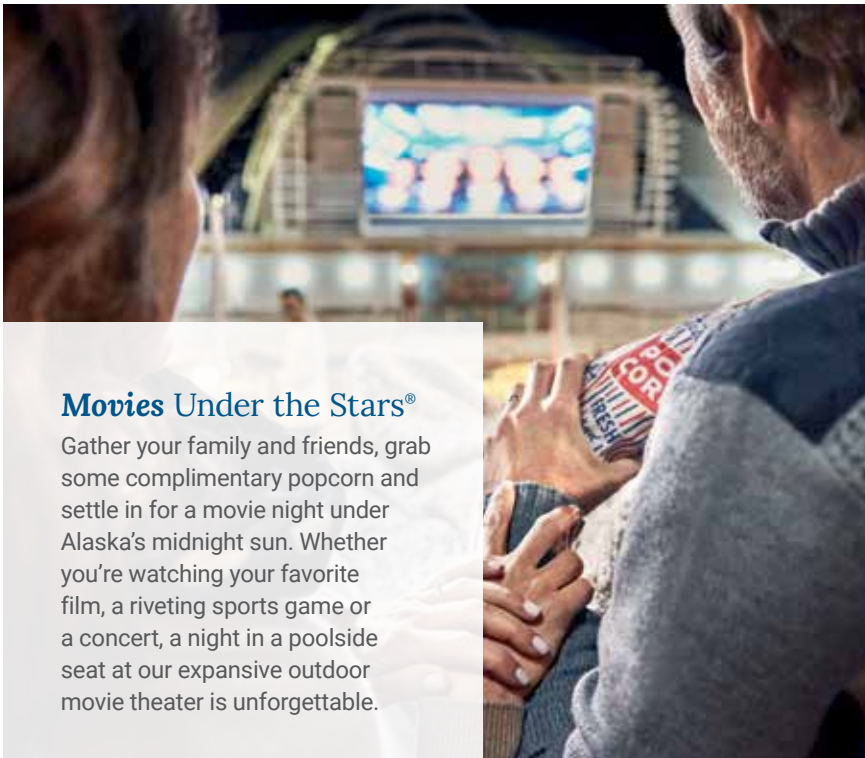
## Bring home something new

Browse The Shops of Princess and experience some of the finest retail shopping at sea. Commemorate your cruise to Alaska with designer brands like Swarovski®, Effy® and Citizen®. Bring home your very own plush Stanley, the curious little bear who travels the world on Princess®. Delight in unique finds from your destination — all at affordable tax- and duty-free prices.



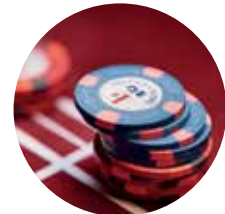
## Discover the Piazza

Excitement, entertainment and libations are always present at the bustling Piazza. On your Alaska voyage, you won't want to miss the adorable sled dogs or participating in a Klondike Festival celebration. Pair the festivities with a cocktail or a hot chocolate and let the musicians and street performers entertain you.



## Movies Under the Stars®

Gather your family and friends, grab some complimentary popcorn and settle in for a movie night under Alaska's midnight sun. Whether you're watching your favorite film, a riveting sports game or a concert, a night in a poolside seat at our expansive outdoor movie theater is unforgettable.



## Feeling Lucky?

Go all in at our casino on board. Try your hand at the latest in video poker and slots; win big at roulette and craps; or sit down to popular table games. Don't miss out on bingo, offered in our lounges. Or enjoy gaming anywhere on board when you access Ocean® Casino using the MedallionClass® app on your smart device.

<sup>60</sup>USA TODAY, 10Best Readers' Choice Awards, Best Cruise Ship for Entertainment, 2017-2015

<sup>65</sup>Must be 18 years of age or older to play in the casino.

# revive, relax replenish

Slip into a state of tranquility and let us pamper you with a soothing massage in the Lotus Spa.® Relax in style in The Sanctuary and sink into your Princess® Luxury Bed after a long day exploring on shore.



## Lotus Spa®

Named "Best Spa Facilities" by *Porthole Magazine*, the Lotus Spa® inspires the ultimate self-care. After a day spent exploring Alaska's rugged wilderness, let the Lotus Spa® send you to a state of pure relaxation.



## Princess *Luxury Bed*

Nothing will be more tempting than sinking into the jacquard-woven sheets of the Princess Luxury Bed after a day exploring ashore. The Princess Luxury Bed uses the latest in sleep science and technology.



## Lotus Spa® Fitness Center

Marvel at dramatic glacier views on our outdoor jogging track or take a rejuvenating yoga class in our fitness center. Enjoy the option to work out with weights, treadmills and other equipment that keep your mind, body and spirit renewed at sea.



## The *Sanctuary*

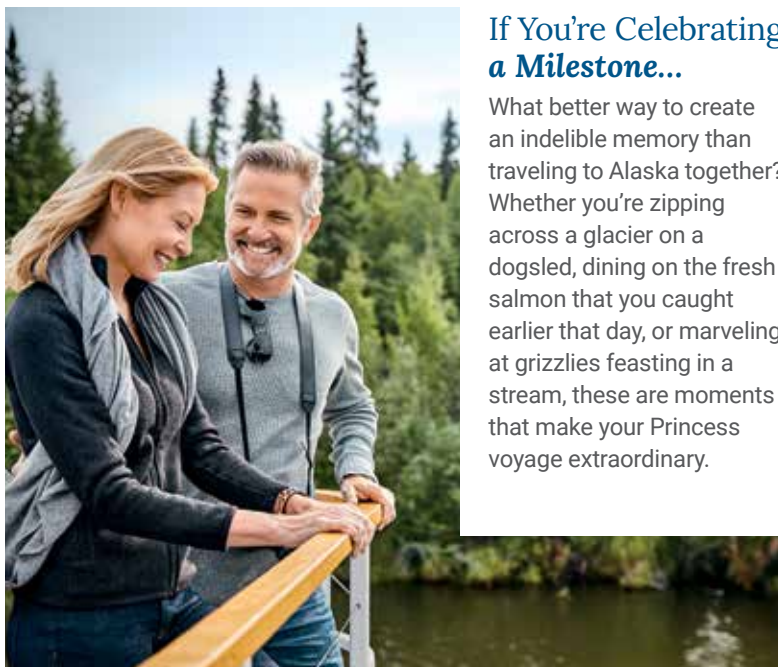
An oasis just for adults, The Sanctuary offers a chance to relax and unwind with some of the best ocean views on your ship. Take in the dramatic sights of Alaska's soaring peaks from a padded lounge chair and let our Serenity Stewards attend to your every need.

<sup>61</sup>Cruise Critic, Best Cruise Ship Beds, 2018



# how will you celebrate?

A Princess® voyage is the ideal way to honor a meaningful anniversary, birthday or other occasion. Or perhaps you're simply celebrating the chance to enjoy time together! Ask us about how to make each moment something special with thoughtful amenities such as cake, flowers, balloons and more.



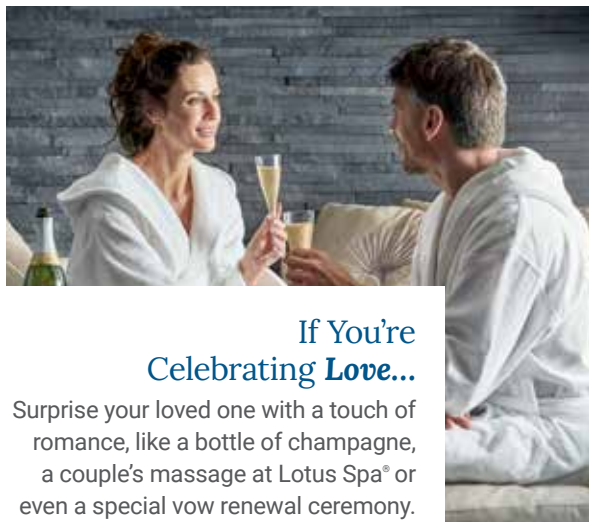
## If You're Celebrating a Milestone...

What better way to create an indelible memory than traveling to Alaska together? Whether you're zipping across a glacier on a dogsled, dining on the fresh salmon that you caught earlier that day, or marveling at grizzlies feasting in a stream, these are moments that make your Princess voyage extraordinary.



## Certified in Celebration

Everyone will take home a special memory with our curated celebrations on board. For the best insight, we turn to Jill Whelan, our Celebrations Ambassador — who you probably recognize as Vicki Stubing on *The Love Boat*. Today, she helps Princess guests plan their next big moment, both on board and on shore. Learn more and watch our "Celebrations with Jill Whelan" video series at [princess.com/celebrations](https://princess.com/celebrations).



## If You're Celebrating Love...

Surprise your loved one with a touch of romance, like a bottle of champagne, a couple's massage at Lotus Spa® or even a special vow renewal ceremony.

## If You're Celebrating a Birthday...

A champagne toast, a candlelit cake, festive décor.

You'll be the star of the evening with extra-special celebrations. On Princess MedallionClass® ships, there are even more personal moments to enjoy — including doors that wish you happy birthday and other surprises!



To learn more about celebrating with Princess, visit [princess.com/celebrations](https://princess.com/celebrations).

# make memories together



When you cruise with Princess®, we'll make sure every moment is special for all members of the family. Discover Alaska's amazing landscapes, wildlife and quaint ports together on shore and continue the adventure on board with engaging activities designed for all ages. And we make it seamless to cruise with your family and friends. All of our staterooms are able to comfortably accommodate up to four guests, and we have spacious two-bedroom family suites that accommodate up to eight people on select ships.



Engaging youth and teen experiences created in partnership with Discovery™ are designed for cruisers ages 3 to 17 and will engage, challenge and inspire your kids.

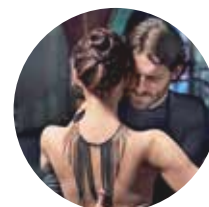


## Just for Kids

At Camp Discovery, specifically designed activities that encourage kids to play, huddle, create and discover cater to every interest. Arts and crafts, outdoor activities, movies and theme nights are highlights of the **Treehouse** (for younger kids) and the **Lodge** (for older kids).

## Just for Teens

The Beach House is the place to be for teens! **The Beach House** is designed as a contemporary beach-themed hangout and is where teens can socialize and meet new friends. Video game tournaments, movie nights and dance classes are all a part of the fun, but just hanging out works too.



## Parents Night Out

If you and your partner feel like hitting the town or having some evening cocktails, we offer late-night kid sitting<sup>63</sup> so you can take in local flavors or dance the night away in our lounges.





## Fun Starts Here

Kids can experience even more fun with Princess when they participate in the Alaska Explorers Youth Program, created in partnership with Discovery Channel and Glacier Bay National Park Rangers. The program brings National Park Rangers on board to educate and inspire kids of all ages to discover Alaska's natural wonders. At the end of the program, each child gets their own ranger badge!

## Discovery at Sea

From captivating activities featuring hit Discovery™ programs to up-close encounters with Discovery™ and Animal Planet™ exclusive shore excursions, our enriching Discovery at SEA™ vacation experiences are fun for every member of the family.



## High Seas Heist

Put your deduction skills to the test by hunting for clues on our High Seas Heist with Detective Joe Kenda. During this elaborate, cruise-long mystery, you'll solve a series of puzzles through various clues.<sup>64</sup>

## DEADLIEST CATCH

### TRUE-LIFE ADVENTURES

Learn what life as a crab fisherman on Alaska's waters is really like with experiences based on the popular Discovery™ show.

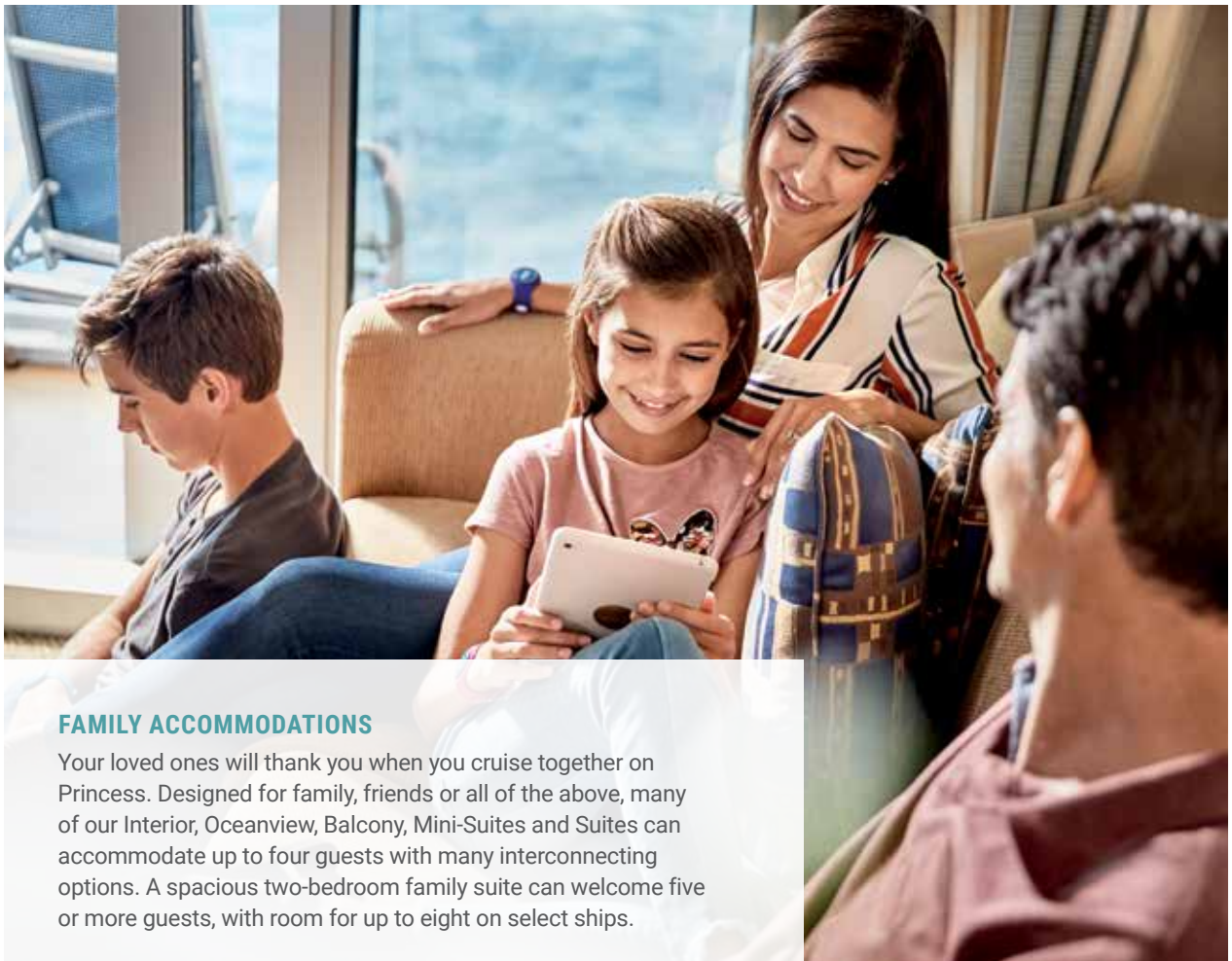
<sup>62</sup>Travel + Leisure, World's Best Awards, Best Cruise Line for Families, 2016

<sup>63</sup>Group late-night babysitting (in the centers, \$5 per child per hour) for ages 3–12 from 10PM–1AM. Group babysitting is not available for children under 3 years. In port supervision/programming is complimentary for children and teens ages 3–17. In port supervision is not available for children under 3 years.

# welcome home



Exhilarating excursions are an essential part of your Alaska voyage. When you return to your ship, your stateroom is a welcoming space to unwind, relax and enjoy the views. Gather with your loved ones in your spacious stateroom to recount your day of kayaking through fjords, watching wildlife or learning native culture, and rest up for the next adventures to come. The Princess® experience always earns accolades, including Best Cruise Ship Beds from the readers of *Cruise Critic* and Highest Customer Satisfaction from *TravelAge West*. Our friendly, accommodating crew members hail from all over the globe, and we're here to make sure that this is an experience you treasure for a lifetime.



## FAMILY ACCOMMODATIONS

Your loved ones will thank you when you cruise together on Princess. Designed for family, friends or all of the above, many of our Interior, Oceanview, Balcony, Mini-Suites and Suites can accommodate up to four guests with many interconnecting options. A spacious two-bedroom family suite can welcome five or more guests, with room for up to eight on select ships.

<sup>66</sup>TravelAge West, WAVE Awards, Cruise Line with Highest Customer Satisfaction, 2020-2013

<sup>67</sup>Cruise Critic, Best Cruise Ship Beds, 2018





## SUITE

Our largest stateroom option with all the amenities of Club Class. Sip a welcome glass of champagne and enjoy a complimentary dinner on embarkation day, among other exclusive benefits.



## CLUB CLASS<sup>66</sup>

Enjoy the standard features of a Mini-Suite along with upgraded amenities plus exclusive VIP touches such as Club Class dining, complimentary wine setup and more.



## MINI-SUITE

Larger than a balcony stateroom, enjoy upgraded amenities including floor-to-ceiling glass doors, a separate seating area and sofa bed.



## BALCONY

A balcony and patio furniture let you enjoy lots of natural light and stunning scenery right from your stateroom.



## standard stateroom features:

- The Princess Luxury Bed
- Minifridge
- Flat-panel television
- Bathroom with shower
- Complimentary 24-hour room service<sup>70</sup>
- Hair dryer
- Digital security safe

## MORE OPTIONS



## OCEANVIEW

Take in the views from a broad picture window and enjoy all Princess standard amenities.



## INTERIOR

The interior stateroom features two twin beds or a queen-size bed and is our most affordable option.



## WHEELCHAIR-ACCESSIBLE

Full wheelchair-turning space, roll-in shower with grab bars and fold-down seat, easy-access closet and accessible writing desk. Details at [princess.com](https://princess.com)

AMENITIES	SUITE	CLUB CLASS	MINI-SUITE	BALCONY
Balcony with luxury furniture including two loungers, four chairs, table and ottoman	✓			
Balcony with standard furniture including two to four chairs, table and ottoman		✓	✓	✓ <sup>74</sup>
Two floor-to-ceiling sliding glass doors	✓			
One floor-to-ceiling sliding glass door		✓	✓	✓
Two flat-panel televisions	✓	✓	✓	
Our very best Mini-Suites		✓		
Club Class dining*	✓	✓		
One-time complimentary wine setup <sup>69</sup>		✓		
Evening canapés, upon request	✓	✓		
Welcome glass of champagne <sup>73</sup>	✓	✓	✓	
One complimentary mini-bar setup <sup>73</sup>	✓			
Separate sitting area with sofa bed, chair and table	✓	✓	✓	
Upgraded bathroom amenities	✓			
Bathroom tub and massage showerhead	✓	✓	✓	
Separate shower	✓			
Upgraded terry shawl bathrobes	✓	✓		
Complimentary dinner in a specialty restaurant on embarkation day <sup>72</sup>	✓			
Priority specialty dining and shore excursion reservations	✓			
Complimentary laundry and professional cleaning services	✓			
Priority embarkation and disembarkation at the beginning and end of your cruise	✓	✓		
Priority disembarkation at tender port	✓			

Note: Amenities represent typical arrangements and may vary by ship. Certain stateroom categories may vary in size and configuration by ship. Stateroom views are considered unobstructed unless noted otherwise. Some categories have portholes versus picture windows. Some staterooms are partially to fully obstructed, as shown on deck plans at [princess.com](https://princess.com). Obstructions do not include certain nautical items like handrails, dividers or ship hardware. For balcony staterooms, the view is determined from the perspective of the balcony railing. Balconies may have either solid steel or glass railings. Upper berth and bed ladder capacities are 250 kg. Staterooms that can accommodate rollaways have two lower berths and one upper berth, and the staterooms can accommodate a fourth berth as a rollaway bed upon request at time of reservation. There are a limited number of rollaway beds per ship, per voyage. Use of rollaway beds restricts cabin space. Call 1.800.774.6237 for more information. <sup>66</sup>Open for breakfast and dinner daily as well as lunch on sea days. <sup>69</sup>Includes ½ bottle of red wine and ½ bottle of white wine on embarkation day. <sup>70</sup>Charges apply for pizza delivery and beverages. Subject to change. <sup>72</sup>Applicable on cruises six days or longer. <sup>73</sup>Complimentary mini-bar setup is one-time only per stateroom for guests 21 and over. Welcome glass of Champagne is for guests 21 and over. <sup>74</sup>Balcony staterooms do not include an ottoman.

# cruise plus<sup>®</sup> hotel packages

A Cruise Plus<sup>®</sup> Hotel Package enables you to relax before or after your cruise with the peace of mind knowing you won't ever have to rush. Add extra days in cities like San Francisco, Vancouver, B.C., Seattle or Anchorage to take in the sights. All hotels are centrally located and offer the same high level of service you'll experience on your cruise. Additionally, a Princess<sup>®</sup> representative meets you to ensure all transfers between airport, ship and hotel go smoothly, and that luggage handling is taken care of.

## ANCHORAGE

### Hotel Captain Cook

Located in the bustling hub of the city, this hotel is Anchorage's finest property with a true Alaska feel.

**1 NIGHT FROM \$229**  
**ADDITIONAL NIGHTS FROM \$129**

### Hotel Captain Cook with Rail Transfer to/from Whittier

**1 NIGHT FROM \$279**  
**ADDITIONAL NIGHTS FROM \$129**

## SAN FRANCISCO

### Mark Hopkins

### InterContinental Hotel

Situated atop Nob Hill, this hotel has one of San Francisco's most prestigious addresses. It boasts fantastic views from every guest room and is minutes away from the city's best attractions.

**1 NIGHT FROM \$279**  
**ADDITIONAL NIGHTS FROM \$149**

## SEATTLE

### Doubletree Seattle-Tacoma Airport Hotel

The perfect choice for guests needing an extra night in Seattle, adjacent to the Seattle-Tacoma Airport and 20 minutes south of downtown Seattle.

**1 NIGHT FROM \$169**  
**ADDITIONAL NIGHTS FROM \$119**

### Westin Hotel

Located in the heart of downtown Seattle, close to popular attractions — including Pike Place Market and the Space Needle.

**1 NIGHT FROM \$199**  
**ADDITIONAL NIGHTS FROM \$139**

Note: Seattle packages are available only in conjunction with Crown Princess<sup>®</sup> and Discovery Princess<sup>®</sup> sailings.

## VANCOUVER, B.C., CANADA

### Westin Bayshore Hotel

Ideally located next to Stanley Park, on the water, with views of Coal Harbour and the city skyline.

**1 NIGHT FROM \$179**  
**ADDITIONAL NIGHTS FROM \$119**

### Westin Bayshore Hotel with Day Trip to Victoria, B.C., and Butchart Gardens

Ferry to the very British city of Victoria, and visit the famous Butchart Gardens and downtown Victoria before returning to Vancouver by ferry.

**PER PERSON FROM \$469**

Note: Available with two or more night stays only.

## VANCOUVER/VICTORIA, B.C., CANADA PACKAGE (PRE- OR POST-CRUISE)

**DAY 1:** Arrive in Vancouver and stay overnight at one of Vancouver's hotels.

**DAY 2:** Ferry to Vancouver Island and sightsee by motorcoach. Visit Butchart Gardens and enjoy all the scenic attractions of Victoria, where you'll stay overnight at the Fairmont Empress Hotel.

**DAY 3:** In the morning, board the motorcoach for the return trip to Vancouver by ferry and embark the ship.

### Westin Bayshore Hotel/ Fairmont Empress Hotel

**2 NIGHTS FROM \$669**

Note: Vancouver packages are available only in conjunction with Majestic Princess<sup>®</sup>, Grand Princess<sup>®</sup> and Royal Princess<sup>®</sup> sailings. Post-package operates in reverse.



All Cruise Plus<sup>®</sup> Hotel Packages prices quoted are per person, double occupancy. Government fees and taxes of up to \$110 per person are additional, and vary by city and duration of stay. Additional nights increase these fees. For single and triple rates, just ask your travel advisor. All Cruise Plus<sup>®</sup> Hotel Packages include hotel accommodations, luggage handling, meet-and-greet services, transfers between airport/hotel and hotel/pier, and the hospitality services of a Princess representative. Cruise Plus<sup>®</sup> Hotels are not owned or operated by Princess.



## PIER TRANSFERS? NO PROBLEM

Princess offers ship-day transfers as a secure and efficient way for guests to start and end their cruise vacation with peace of mind. Transfers are available one way or roundtrip to guests using both the Princess EZair® program and those booking air independently. See your travel advisor or call 1.800.774.6237 for more information.

### ANCHORAGE AND FAIRBANKS

*Option available for cruisetours only.*

Between airport & hotel

**\$14 PER PERSON, ONE WAY<sup>76</sup>**

### ANCHORAGE/WHITTIER

*Highly recommended for Voyage of the Glaciers sailings as transportation in and out of Whittier is extremely limited.*

Motorcoach between airport & pier

**\$59 PER PERSON, ONE WAY<sup>75</sup>**

Cruisetours include this transfer between Whittier and Anchorage in the Cruisetour itinerary and fare.

Rail between airport & pier

**\$139 PER PERSON, ONE WAY<sup>75</sup>**

Availability on this option is limited. Flights must arrive in Anchorage before 7:30 a.m.

### SAN FRANCISCO

Between airport & pier

**\$34 PER PERSON, ONE WAY<sup>75</sup>**

### SEATTLE

Between airport & pier

**\$29 PER PERSON, ONE WAY<sup>75</sup>**

Seattle Airport to Vancouver Pier

**\$79 PER PERSON, ONE WAY<sup>75</sup>**

This option is available only in conjunction with Majestic Princess®, Grand Princess®, and Royal Princess® sailings.

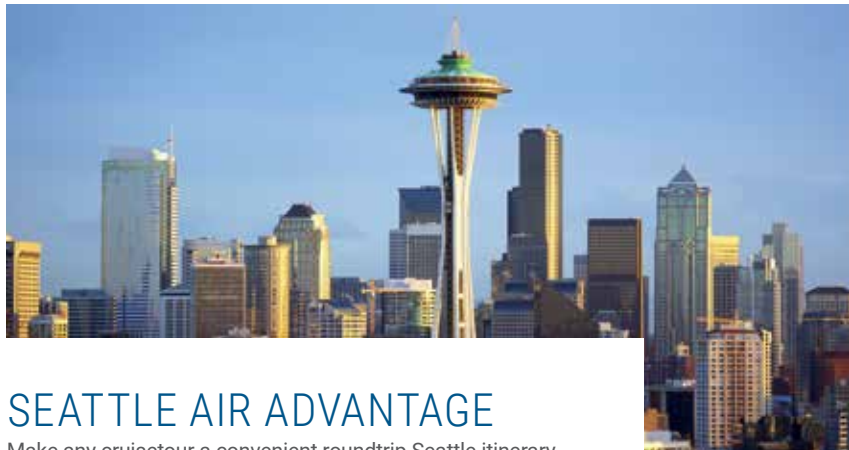
### VANCOUVER, B.C., CANADA

Between airport & pier

**\$29 PER PERSON, ONE WAY<sup>75</sup>**

<sup>75</sup>These options are provided both to and from the ships. Advance reservations are recommended. Transfer service operates only on ship arrival and departure days.

<sup>76</sup>Advanced reservations are required.



## SEATTLE AIR ADVANTAGE

Make any cruisetour a convenient roundtrip Seattle itinerary. This optional package includes motorcoach travel between Seattle and Vancouver, airfare between Alaska and Seattle, and an overnight stay in a Seattle hotel. With this easy option, you need to purchase only home city air to/from Seattle (see Princess EZair® below). We'll take care of the rest.

### PACKAGES START AT \$540

On Northbound itineraries, guests must arrive in Seattle by 10 a.m. on day of cruise embarkation. On Southbound itineraries, guests should schedule air out of Seattle after 4 p.m. on day of cruise disembarkation.

## PRINCESS EZAIR®

Save time, save money and book your travel worry-free.

Don't miss your chance to book your next cruise vacation and airfare early with Princess EZair®! Check out some of the great benefits to booking travel using this easy-to-use tool:

### SURPRISINGLY LOW PRICES

We've negotiated new, lower competitive airfares. Many times, you'll find our Flexible fares are even lower than our Restricted fares!

### WORRY-FREE BOOKING

With our Flexible fares, you can change flights up to 45 days prior to departure with No Change Fee.<sup>77</sup> Book flights with no amount due until cruise final payment.

### LATE ARRIVAL PROTECTION

Ensures you will get to your cruise if flights are delayed or canceled, and home if for any reason the cruise or Princess transfer cause you to miss your return flights.



### NO CUSTOMIZATION FEE

You can choose the desired airline, flight, class of service and requested ancillary services with no extra customization fee.

### 24/7 SUPPORT

Via our En Route Desk, Princess offers 24/7 support to ensure that your air travel is as worry-free as your cruise.

*To learn more about Princess EZair®, contact your travel advisor, call 1.800.774.6237 or visit [princess.com/ezair](http://princess.com/ezair).*

<sup>77</sup>No charge penalty until 45 days prior to departure for Flexible fares only. Restricted fares are non-refundable and must be paid in full at the time of booking.

# new to **cruising**

Take a look at this helpful guide for first-time cruisers to familiarize yourself with insightful tips before you set sail!



## Why CRUISE?

Glaciers, wildlife and remote ports of call are best experienced from a cruise. Let Princess,<sup>®</sup> named the best cruise line in Alaska by *Travel Weekly*, introduce you to its wonders and you'll see why more people choose Princess in Alaska than any other cruise line.

## WHAT DO I DO On Shore?

We offer countless excursions led by reputable operators who invite you to explore Alaska deeper. We've been voted "#1 Best Shore Excursions" by *Cruise Critic*, and we offer immersive excursions that let you explore local cultures, wildlife and cuisine.

## WHAT CAN I DO On Board?

Indulge in fresh Alaska seafood and other local eats. Meet adorable sled puppies, and learn about Alaska from park rangers. From spa treatments to dazzling productions, each day offers something new to discover.



## Where CAN I SAIL?

Almost anywhere!  
We visit over 380 destinations and all seven continents. First-time cruisers love Alaska, the Caribbean and Europe.

## TAKE A CLOSER LOOK ...

### ⊘ PERCEPTION

*"I don't want to be trapped on a crowded ship."*

### ⌋ REALITY

Princess ships are equipped with MedallionClass, which offers a real-time view of attendance in onboard areas, giving you plenty of **SPACIOUS CHOICES** so you won't have to give up comfort or spend time waiting in lines.

### ⊘ PERCEPTION

*"Cruises don't stop long enough at destinations to really experience them."*

### ⌋ REALITY

Most port calls are 8 hours or longer, and Princess offers hundreds of More Ashore **LATE NIGHT** (9 p.m.) departures or **OVERNIGHT** stays, allowing guests to explore ports by day and night.

### ⊘ PERCEPTION

*"I'm too nervous about getting seasick."*

### ⌋ REALITY

Most new cruisers have **NO PROBLEM** with seasickness due to the ship's size, navigational avoidance of storms and stabilizers. You may not even notice the ship is moving!

### TRUST THE EXPERTS TO HELP WITH PLANNING

Contact your travel advisor, or use the Travel Agent Locator at [princess.com](http://princess.com) to find one in your area. You can also call 1.800.901.1172 to speak with a free Princess Cruise Vacation Planner.



With Princess EZpay<sup>®</sup>, our new monthly payment plan, you can choose to have monthly payments automatically charged to your debit or credit card with no interest, making it easier for you to cruise whenever you want!



# princess plus<sup>99</sup>

## Get the best value on your cruise or cruisetour

Spend less time worrying about details and more time making memories together. Every fare you see inside already includes drinks, Wi-Fi and crew incentive — worth \$95 per day — so you know you're getting the most incredible value on your next cruise vacation.



### what's it worth?

#### A \$95 value included each day

Retail Price (USD)

premier beverage package (includes service charges)	\$70.79
wi-fi	\$9.99
crew incentive	\$14.50
<b>TOTAL per day</b>	<b>\$95.28</b>

7-day Voyage of the Glaciers cruise starts at \$849 and includes **\$665** of additional value.<sup>79</sup>

### Fares in this brochure include:

- **Drinks:** Enjoy our Premier Beverage Package, which includes cocktails, wine, beer, fountain soda, bottled water, specialty coffees, teas and more.
- **Wi-Fi:** Stay connected with family and friends — posting, video chatting, sharing — thanks to the land-like speed of MedallionNet.<sup>®</sup>
- **Crew Incentive:** We pay the crew incentive on your behalf, so the crew who takes good care of you is taken care of too.

To learn more, please visit: [princess.com/princessplus](https://princess.com/princessplus).

Want a no-frills low fare? Check out Princess Savers fare at [princess.com/cruisedeals](https://princess.com/cruisedeals).

<sup>79</sup>Fares are per guest per day and apply to minimum lead-in categories on Majestic Princess<sup>®</sup> 05/07/2022 for Alaska Voyage of the Glaciers cruise only on a space-available basis at time of booking.

<sup>99</sup>General Princess Plus Terms (applicable to all portions of Princess Plus ("PP") — Available to legal residents of the 50 U.S./DC, Canada, and Puerto Rico. One guest's participation in PP may be dependent on the other guest in his/her stateroom's participation, as determined by booking method. PP may be capacity controlled on select cruises. PP and its parts are non-transferable, is not redeemable for cash and may not be combinable with other offers. Drinks, Wi-Fi, and Crew Incentive are not applicable to land portion of cruisetours, and expires at the end of each cruise. Premier Beverage Package ("PBP") is valid only for guests who are 21+. Guests under 21 booked under PP will receive the Premier Coffee & Soda Package in lieu of PBP and will not receive any refund for the difference. A daily limit on alcoholic beverages will apply. Bar service charge is only included in the package and is paid on behalf of the guest for qualifying beverages included in the PBP. Wi-Fi included for 1 device per guest. All internet usage subject to standard Wi-Fi policies, which may limit browsing of sites due to network security and bandwidth usage and is subject to change with or without notice. Crew Incentive paid on behalf of the guest vary based on stateroom type (up to 4 guests per stateroom). PP does not include other service charges. Subject to full terms at: <https://www.princess.com/cruise-deals-promotions/princess-plus/>.

Reference promotion code: NPP

Note: For assistance reserving a wheelchair-accessible stateroom or other reasonable accommodations, please call 1.800.774.6237.

©2021, Princess Cruise Lines, Ltd. Ships of Bermudan and British registry.

# plan your cruise

Now that you've dreamed of your Alaska cruise vacation, here's some information and options to help make your vacation easier and more worry-free.



## PRINCESS VACATION PROTECTION



*Enjoy more peace of mind and protect your vacation.*

One of the most common questions we hear from our guests is, "Should I buy travel protection?" If you want to spend more time relaxing and less time worrying about the unexpected, the answer is "yes." That's why we offer Princess Vacation Protection (PVP), which provides a cancellation fee waiver<sup>82</sup> plus travel insurance benefits<sup>83</sup> and 24-hour worldwide CareFree™ Travel Assistance.<sup>84</sup> Help protect in the event of unforeseen illness, including COVID-19, trip delays, baggage issues and more. It's a convenient way to help ease your worries before setting sail.

Princess Vacation Protection includes:

- Full reimbursement of cancellation fees if you change vacation plans for a specified reason<sup>85</sup>
- "Any Reason" cancellation enhancement allows you to cancel for any reason at all, and you'll receive 75% of the cancellation fee amount in the form of future cruise credits under the Standard

plan and 100% under the Platinum plan.

- Coverage for lost, stolen, delayed or damaged luggage
- Reimbursement for trip delays or trip interruptions
- Excess medical expense coverage and emergency medical evacuation
- Access to 24/7 worldwide assistance for travel, medical and emergency services

For those wanting additional cancellation protection, Princess Vacation Protection Platinum offers a full, 100% FCC should you cancel your vacation plans for a reason not specified in the plan as well as providing increased benefit limits for excess medical, emergency evacuation and baggage.

*Please review the plan information available at the links provided below for additional details.*

Princess Vacation Protection is available for purchase up to final payment.

This plan provides coverage that applies only during the covered trip. You may have coverage from other sources that provides you with similar benefits but may be subject to different restrictions depending upon your other coverages. You may wish to compare the terms of this policy with your existing life, health, home and automobile policies. If you have any questions about your current coverage call your insurer, insurance agent or broker.

Princess Vacation Protection Standard: To obtain your state-specific plan documentation providing the terms, conditions and exclusions of the plan, visit <http://www.affinitytravelcert.com/docs/nwepct01>.

Princess Vacation Protection Platinum: To obtain your state-specific plan documentation providing the terms, conditions and exclusions of the plan, visit <http://www.affinitytravelcert.com/docs/nwepct02>.

<sup>82</sup>Non-insurance features provided by Princess. For WA residents only, Trip Cancellation benefits are underwritten by Nationwide Mutual Insurance Company and Affiliated Companies, Columbus, Ohio (NAIC #23787).

<sup>83</sup>Travel Insurance Benefits are underwritten by Nationwide Mutual Insurance Company and Affiliated Companies, Columbus, Ohio (NAIC #23787).

<sup>84</sup>Travel Assistance services are non-insurance services provided by LiveTravel.

Note that Princess Vacation Protection is not available to residents of the state of New York, Quebec or Puerto Rico.

PCT\_01282021

## PRINCESS LUGGAGE VALET<sup>86</sup>



With Princess Luggage

Valet service, to your home or office to your stateroom. No more hauling suitcases through airports or standing around at baggage claims. Your luggage can also be shipped home to you at the end of your vacation. 1.888.693.8229 (U.S. and Canada) or visit [luggageforward.com/princess](http://luggageforward.com/princess) to make a reservation.

## PRINCESS ACCESS<sup>SM</sup>



On board every Princess ship, you'll find wheelchair-accessible staterooms, "All-in-One Kits" with TTY, Assistive Listening Devices, Braille signage, and screen readers available in all Internet Cafés. For more information about Princess Access<sup>SM</sup> visit [princess.com](http://princess.com). You or your travel advisor may send inquiries to the Access Office via email at [accessoffice@princesscruises.com](mailto:accessoffice@princesscruises.com).

## MEDICAL CENTERS



All Princess medical centers proudly hold the distinction of being continuously accredited since 2006 to international healthcare quality standards and certified to ISO 9001:2015. Our medical centers also meet or exceed the current cruise ship medicine guidelines established by the American College of Emergency Physicians.

<sup>86</sup>Princess Luggage Valet is provided by DHL Worldwide Express and Federal Express. DHL Worldwide Express and Federal Express are independent companies and are not owned or operated by Princess. Princess reserves the right to modify or withdraw this service at any time. Additional terms and conditions apply.



# our fleet



All ships sailing to Alaska are MedallionClass®-enabled to ensure your vacation is easy and personalized. See page 70 or visit [princess.com/medallionclass](https://princess.com/medallionclass) to learn more.

Whether you're soaking up glacial views or taking in the spectacle of our live entertainment, discover what each unique ship has to offer in Alaska for the 2022 season.

	Majestic Princess®	Discovery Princess <sup>SM</sup>	Royal Princess®	Crown Princess®	Ruby Princess®	Grand Princess®
Guests	3,560	3,560	3,560	3,080	3,080	2,600
Balconies	Over 1,400	Over 1,400	Over 1,400	Over 800	Over 800	Over 700
MedallionNet®	✓	✓	✓	✓	✓	✓
Movies Under the Stars® (poolside theater)	✓	✓	✓	✓	✓	✓
The Sanctuary (relaxing retreat for adults)		✓	✓	✓	✓	✓
Lotus Spa® & Fitness Center		✓	✓	✓	✓	
Italian-inspired Piazza	✓	✓	✓	✓	✓	✓
International Café (24-hour coffees, desserts, sandwiches and tapas)	✓	✓	✓	✓	✓	✓
Specialty Restaurants						
Vines (wine bar)	✓	✓	✓	✓	✓	✓
Planks BBQ <sup>SM</sup>	✓ <sup>87</sup>	✓ <sup>87</sup>			✓ <sup>87</sup>	✓ <sup>87</sup>
Steamers Seafood <sup>SM</sup>	✓ <sup>87</sup>	✓ <sup>87</sup>			✓ <sup>87</sup>	✓ <sup>87</sup>
Salty Dog Gastropub <sup>SM</sup>		✓		✓	✓	
Sabatini's <sup>SM</sup> Italian Trattoria <sup>87</sup>		✓	✓	✓		✓
Crown Grill <sup>SM</sup> (steak & seafood)	✓	✓	✓	✓	✓	✓
Sterling Steakhouse <sup>SM</sup>						
Chef's Table Lumiere	✓	✓	✓			✓
Harmony <sup>SM</sup> (Chinese)	✓					
Bistro Sur La Mer <sup>SM</sup>	✓					

Venues and dining options vary by ship. Nominal charges may apply. See deck plans on [princess.com/ships](https://princess.com/ships) for details.

<sup>87</sup>Planks BBQ and Steamers Seafood on Majestic Princess®, Discovery Princess<sup>SM</sup>, Ruby Princess® and Grand Princess® will appear as a "pop-up" location inside of the World Fresh Marketplace.



P.O. Box 947, Santa Clarita, CA 91380-9047



discover the world  
with Princess®

ALASKA • ASIA • AUSTRALIA & NEW ZEALAND • CALIFORNIA & PACIFIC COAST • CANADA & NEW ENGLAND • CARIBBEAN  
EUROPE • HAWAII • JAPAN • MEXICO • PANAMA CANAL • SOUTH AMERICA & ANTARCTICA • SOUTH PACIFIC  
TAHITI & FRENCH POLYNESIA • WORLD CRUISE

<sup>1</sup>More guests choose Princess in Alaska than any other cruise line. <sup>2</sup>Travel Weekly, Best Cruise Line in Alaska, 2020–2007; 2005–2003. <sup>3</sup>Travel + Leisure, World's Best Awards, Best Cruise Line for Families, 2016. <sup>4</sup>TravelAge West, WAVE Awards, Best Cruise Line, Alaska, Sailings, 2020–2019. <sup>5</sup>Women's Choice Awards, Best Cruise Line, Alaska, 2017; 2014; 2013. <sup>6</sup>TravAllianceMedia, Travvy Award, Best Cruise Line, Alaska, 2020. <sup>7</sup>Cruise Fever, Fan Awards, Best Cruise Line to Alaska, 2017–2014. <sup>8</sup>Cruise Critic, Best Alaska Cruises, 2015–2014. <sup>9</sup>Recommend Magazine, Best Cruise Line Itineraries, 2021–2017; 2015–2014; 2012–2004. <sup>10</sup>Cruise Critic, Best Cruise Line for First-Timers, 2011. <sup>11</sup>TravelAge West, Highest Customer Satisfaction, 2020–2013. <sup>12</sup>Travel + Leisure, Top 5 Mega Cruise Ship Line, 2019–2013. <sup>13</sup>Food & Wine Magazine, Best Cruises for Food Lovers, 2014. <sup>14</sup>Cruise International (UK), Best Alaska Cruise Line for Enrichment, 2015–2014.

# BOOK NOW

Visit **PRINCESS.COM** | Call **1.800.PRINCESS (774.6237)** | Contact your **TRAVEL ADVISOR**  
Contact a free **PRINCESS CRUISE VACATION PLANNER** at **1.800.901.1172**

YOUR PROFESSIONAL TRAVEL ADVISOR

special offer for veterans, retired and active military

Princess® honors our U.S. and Canadian militaries with up to \$250 free onboard spending money, depending on cruise length. This offer can be combined with other promotions and used anywhere we sail! To learn more, contact your travel advisor or visit [princess.com/military](https://princess.com/military)

©2021 Princess Cruise Lines, Ltd. Princess®, OCEAN® Medallion®, and the Princess and Ocean logos and trademarks are trademarks of Princess Cruise Lines, Ltd. or its affiliates. All rights reserved. Litho in USA.

**CANADIAN RESIDENTS:** Fares are shown in U.S. dollars, and also available in Canadian dollars. Ask your travel advisor or call Princess for details.

PAK22BR15649